

Scanned 4/27 K.T

- 04.13.11.0

2,784 farms
80% individual or family owned

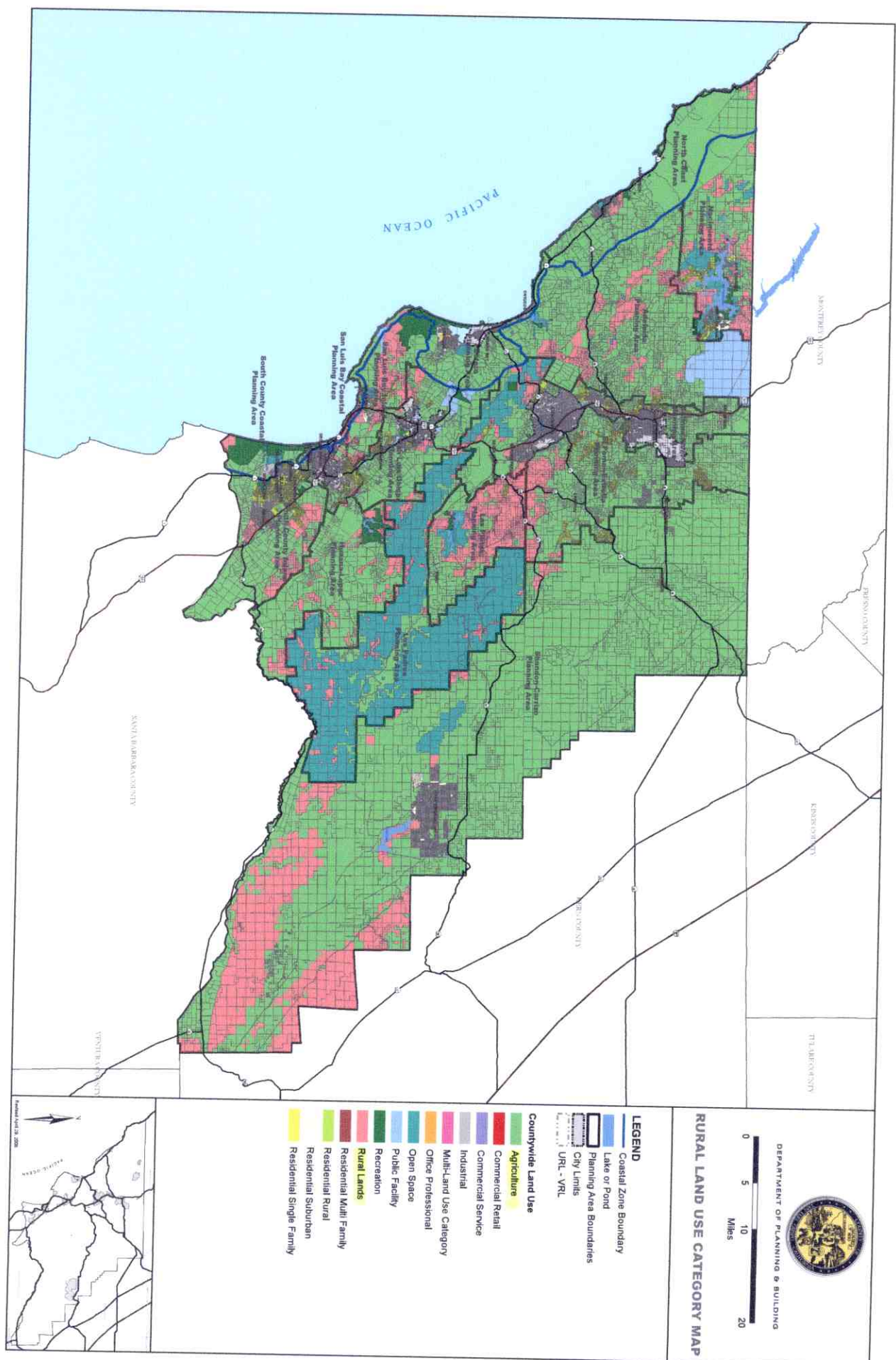
Table 1. County Summary Highlights: 2007 - Con.

[For meaning of abbreviations and symbols, see introductory text]

Item	San Benito	San Bernardino	San Diego	San Francisco	San Joaquin	San Luis Obispo	San Mateo	Santa Barbara
Farms number	625	1,405	6,687	6	3,624	2,784	329	1,597
Land in farms acres	579,851	514,234	303,889	7	737,503	1,369,604	57,089	727,050
Average size of farm..... acres	928	366	45	1	204	492	174	455
Median size of farm..... acres	25	7	4	1	25	40	20	20
Estimated market value of land and buildings:								
Average per farm..... dollars	2,585,410	1,159,028	874,683	533,333	2,069,142	2,236,326	1,620,751	3,223,533
Average per acre..... dollars	2,787	3,167	19,247	457,143	10,168	4,546	9,340	7,081
Estimated market value of all machinery and equipment:								
Average per farm..... dollars	107,836	86,262	40,032	53,354	127,313	69,792	85,246	104,111
Farms by size:								
1 to 9 acres.....	246	772	4,562	6	875	509	111	510
10 to 49 acres.....	110	389	1,527	-	1,449	1,069	101	527
50 to 179 acres.....	71	153	371	-	691	567	66	247
180 to 499 acres.....	65	58	141	-	297	292	26	136
500 to 999 acres.....	44	15	40	-	156	133	11	58
1,000 acres or more.....	89	18	46	-	156	214	14	119
Total cropland..... farms	419	894	5,873	6	3,083	2,061	208	1,265
Harvested cropland..... acres	55,213	35,898	102,502	7	492,032	299,572	10,377	124,965
..... farms	324	709	5,522	6	2,843	1,557	161	1,132
..... acres	32,571	27,516	67,279	(D)	444,670	105,492	4,909	93,280
Irrigated land..... farms	318	779	4,737	6	2,837	1,304	136	1,108
..... acres	30,372	28,977	62,213	6	453,980	98,898	3,579	95,091
Market value of agricultural products sold (see text)..... \$1,000	222,861	743,661	1,054,182	644	1,564,354	560,607	135,550	951,326
Average per farm..... dollars	356,577	529,296	157,646	107,333	431,665	201,368	412,008	595,696
Crops, including nursery and greenhouse crops..... \$1,000	185,666	148,180	961,306	644	991,671	522,274	132,274	913,487
Livestock, poultry, and their products..... \$1,000	37,195	595,482	92,876	-	572,683	38,334	3,276	37,839
Farms by value of sales:								
Less than \$2,500.....	213	515	1,832	2	726	1,027	124	387
\$2,500 to \$4,999.....	55	142	1,043	-	224	251	16	158
\$5,000 to \$9,999.....	50	160	1,006	-	300	218	41	139
\$10,000 to \$24,999.....	94	147	1,215	-	460	357	49	212
\$25,000 to \$49,999.....	63	102	523	3	357	267	22	164
\$50,000 to \$99,999.....	40	68	345	-	330	221	15	123
\$100,000 or more.....	110	271	723	1	1,227	443	62	414
Government payments..... farms	46	59	35	-	309	228	9	16
..... \$1,000	396	1,240	342	-	4,444	4,492	25	132
Total income from farm-related sources, gross before taxes and expenses (see text)..... farms	119	271	602	-	900	634	63	320
..... \$1,000	3,715	17,398	18,946	-	42,197	28,622	3,853	12,618
Total farm production expenses..... \$1,000	167,096	549,885	869,784	(D)	1,215,671	517,763	111,675	790,553
Average per farm..... dollars	267,354	391,377	130,071	(D)	335,450	185,978	339,439	495,024
Net cash farm income of operation (see text)..... farms	625	1,405	6,687	6	3,624	2,784	329	1,597
Average per farm..... \$1,000	59,875	212,415	203,686	(D)	395,325	75,957	27,754	173,523
..... dollars	95,800	151,185	30,460	(D)	109,085	27,284	84,357	108,655
Principal operator by primary occupation:								
Farming..... number	347	679	2,530	2	2,026	1,380	160	813
Other..... number	278	726	4,157	4	1,598	1,404	169	784
Principal operator by days worked off farm:								
Any..... number	438	934	4,907	3	2,318	1,934	215	1,054
200 days or more..... number	247	590	2,427	3	1,261	1,000	145	586
Livestock and poultry:								
Cattle and calves inventory..... farms	206	257	351	-	602	726	53	294
..... number	32,444	204,906	17,066	-	244,996	56,830	2,419	38,961
Beef cows..... farms	182	116	252	-	374	587	44	205
..... number	14,759	3,301	5,775	-	20,099	(D)	1,362	15,541
Milk cows..... farms	7	95	20	-	131	22	3	10
..... number	2,128	110,080	5,138	-	109,336	(D)	3	3,129
Cattle and calves sold..... farms	161	194	216	-	491	584	43	211
..... number	25,722	140,228	7,318	-	110,058	40,566	2,151	31,027
Hogs and pigs inventory..... farms	6	44	96	-	39	36	13	20
..... number	19	(D)	2,456	-	2,328	271	168	254
Hogs and pigs sold..... farms	6	44	79	-	31	40	8	17
..... number	42	(D)	4,407	-	11,188	959	159	585
Sheep and lambs inventory..... farms	47	72	118	-	95	164	26	28
..... number	1,502	1,214	2,170	-	13,750	8,810	403	923
Layers inventory (see text)..... farms	32	150	310	-	107	248	39	73
..... number	490	4,276,147	2,398,504	-	2,163,234	3,993	1,008	984
Broilers and other meat-type chickens sold..... farms	-	10	1	-	10	4	1	3
..... number	-	109	(D)	-	2,788,110	1,312	(D)	(D)
Selected crops harvested:								
Corn for grain..... farms	-	-	-	-	90	2	1	1
..... acres	-	-	-	-	48,684	(D)	(D)	(D)
..... bushels	-	-	-	-	8,129,558	(D)	(D)	(D)
Corn for silage or greenchop..... farms	2	13	-	-	166	-	1	2
..... acres	(D)	2,705	-	-	41,041	-	(D)	(D)
..... tons	(D)	72,012	-	-	1,102,727	-	(D)	(D)
Wheat for grain, all..... farms	1	2	1	-	77	8	-	6
..... acres	(D)	(D)	(D)	-	15,007	952	-	3,358
..... bushels	(D)	(D)	(D)	-	1,347,612	71,989	-	329,966
Winter wheat for grain..... farms	1	2	1	-	61	8	-	4
..... acres	(D)	(D)	(D)	-	12,914	952	-	(D)
..... bushels	(D)	(D)	(D)	-	1,183,366	71,989	-	(D)
Spring wheat for grain..... farms	-	1	-	-	9	-	-	1
..... acres	-	(D)	-	-	1,478	-	-	(D)
..... bushels	-	(D)	-	-	107,457	-	-	(D)
Dunum wheat for grain..... farms	-	-	-	-	9	-	-	1
..... acres	-	-	-	-	615	-	-	(D)
..... bushels	-	-	-	-	56,789	-	-	(D)

--continued

65% of our county lands are in farms



04.13.11.P