

04.30.11.X

#63

ETHEL MC CLATCHEY

Redistricting presentation at San Fernando City Hall
117 Macneil St, San Fernando, CA 91340

MY NAME IS ETHEL MC CLATCHEY. I LIVE^{live} IN THE LOS FELIZ
AREA OF LOS ANGELES. *for more than 30 years*

MY COMMUNITY IS LOS FELIZ, HOLLYWOOD HILLS,
HOLLYWOOD, HANCOCK PARK, PARK LA BREA AND WEST
HOLLYWOOD.

Main streets: Robertson, Sunset Strip, Fairfax, Wilshire, Vermont, Western

MY COMMUNITY IS WHERE I LIVE, SHOP, WORK, AM
ENTERTAINED, EAT IN WONDERFUL RESTAURANTS, VISIT
CULTURAL ATTRACTIONS AND MUSEUMS AND EVEN RECEIVE
MEDICAL CARE.

I PARTICIPATE IN A COMMUNITY ORCHESTRA IN HANCOCK
PARK WITH OTHER FOLKS WHO LIVE HERE. THE ORCHESTRA
HAS, FOR SEVERAL YEARS, PRESENTED CONCERTS AT
PLUMMER PARK IN WEST HOLLYWOOD. I PARTICIPATE WITH
MANY OF MY FRIENDS AT THE SENIOR CENTER IN LOS FELIZ.

MANY OF MY FRIENDS AND NEIGHBORS WORK IN THE
ENTERTAINMENT INDUSTRY OR ARE EMPLOYED BY THE
MANY HOSPITALS IN THE AREA. I WORKED AT LOS ANGELES
CITY COLLEGE THAT TEACHES MANY OF THE CITIZENS
THROUGH CLASSES AND COMMUNITY SERVICES PROGRAMS.

HOLLYWOOD AND GRIFFITH PARK ARE IMPORTANT TOURIST
DESTINATIONS AS ARE THE SUNSET STRIP, HOLLYWOOD
BLVD., THE OBSERVATORY AND YET THIS IS STILL A VERY
RESIDENTIAL AREA.

THIS IS SUCH A UNIQUE\$ AND DISTINCTIVE AREA THAT IT
WOULD BE EXTREMELY DETRIMENTAL TO OUR COMMUNITY IF
REDISTRICTING WERE TO SPLIT IT UP. PLEASE KEEP OUR
COMMUNITY IN ONE VOTING DISTRICT.

04.30.11.W

H 64

**CITY OF SANTA CLARITA
PRESENTATION BY
MAYOR PRO TEM LAURIE ENDER
TO THE
CALIFORNIA CITIZENS REDISTRICTING COMMISSION**

APRIL 30, 2011

Good afternoon Members of the California Citizens Redistricting Commission. I am Mayor Pro Tem Laurie Ender, representing the City of Santa Clarita. Santa Clarita is located in north Los Angeles County and is home to 176,320 residents. The City is located within a separate geographical area known as the Santa Clarita Valley and is totally surrounded by unincorporated Los Angeles County. The Santa Clarita Valley is bordered on three sides by the mountains of the Angeles National Forest and Santa Clarita Woodlands state park.

At the Santa Clarita City Council meeting of April 26, 2011, the Council voted unanimously to request that the following information be presented to the California Citizens Redistricting Commission regarding our community's preferences relative to the redistricting process.

First, we understand that the Commission has established, as one of its key criteria in the redistricting process, that political subdivisions, including cities, communities of interest and neighborhoods be kept in tact. The Santa Clarita City Council requests that the City of Santa Clarita be placed within only one Congressional, State Senate, Assembly, and Board of Equalization district and not divided among two or more districts. Currently,

the City of Santa Clarita is split between two State Senate districts. By placing the City within single districts, the Commission will successfully meet one of your key criteria.

Second, the Santa Clarita City Council requests that the entire Santa Clarita Valley be placed within only one Congressional, State Senate, Assembly, and Board of Equalization district and not divided among two or more districts. Currently, in addition to the two Senate districts which divide the City, the neighborhoods of the Santa Clarita Valley find themselves divided between two Assembly Districts. The population of the City of Santa Clarita and the surrounding unincorporated areas of the Santa Clarita Valley is approximately 260,000 people. Since the valley is a self-contained geographic area, the residents of the incorporated and unincorporated areas share many unifying conditions, including geographic, economic, social, climatic, watershed and political boundaries.

One of the most important bonds shaping the future of our community is coming through a joint planning process between the City of Santa Clarita and Los Angeles County that we refer to as "One Valley, One Vision." This joint partnership is enabling both jurisdictions to update our individual General Plans to strengthen the common goals shared by all the residents of the Santa Clarita Valley. Again, by placing the entire Santa Clarita Valley community within single districts, the Commission will be able to successfully meet one of its key criteria and preserve important neighborhood connections.

While the first two points which I presented are the primary preferences of the City Council, I want to outline areas in which more flexibility exists. The City Council recognizes that neither the City of Santa Clarita, nor the entire Santa Clarita Valley contains enough population to form single legislative districts and that we will need to be paired with other communities. Given that Congressional, State Senate and Assembly districts are comprised of different sized populations, we would like to suggest a wider area from which those individual districts could be drawn. In attempting to meet one of your stated goals to try and respect county boundaries and given Santa Clarita's shared transportation corridors, open space preservation areas, and economic development interests with other communities, we believe it is appropriate to pair the Santa Clarita Valley with other areas in north Los Angeles County. These communities should include the unincorporated areas of north Los Angeles County, the Antelope Valley cities of Lancaster and Palmdale, and if necessary to meet population criteria, include neighborhoods in the northwestern San Fernando Valley portion of the City of Los Angeles.

The City Council also understands that the Commission may need to draw districts that cross county lines. Should that be necessary in constructing specific legislative districts that include Santa Clarita, we believe it is most appropriate to draw those lines to include portions of eastern Ventura County. The Santa Clara River and its watershed are an important natural resource to the City of Santa Clarita and the communities west of us in Ventura County. Additionally, Castaic Lake Water Agency, one of the 29 state water project contractors, serves both Santa Clarita and portions of Ventura County, thus

creating an integral connection on the important issue of water for our region. Finally, Santa Clarita shares a rich historical heritage, tourism connection, regional trails linkages, and strong open space preservation interest with our neighbors in Ventura County.

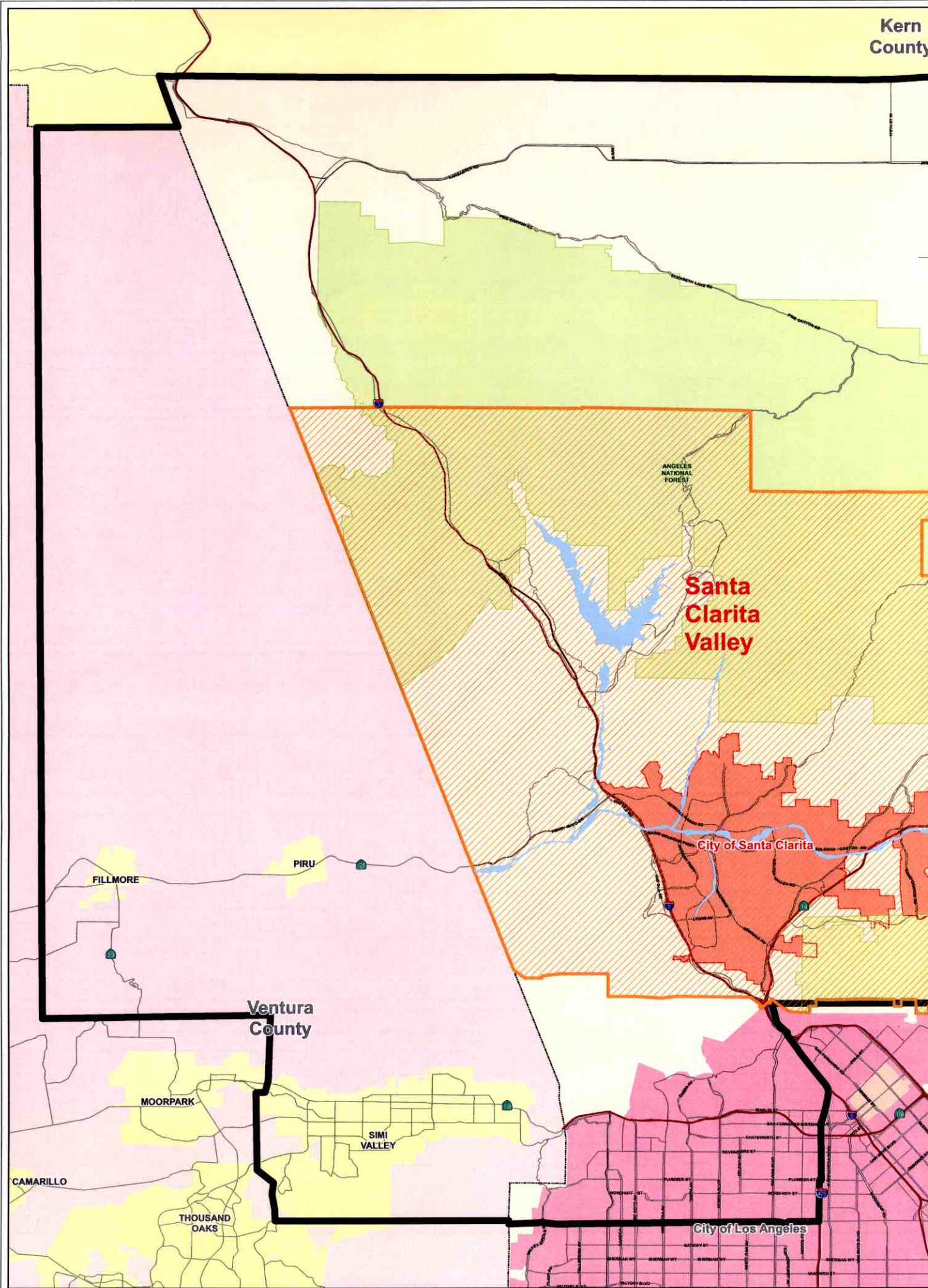
I am pleased to submit to you written copies of my testimony, as well as a regional map that delineates the preferred communities with which Santa Clarita shares strong common bonds and from which we request that Santa Clarita be paired. It is our hope that you will be able to use this map as a flexible tool for creating districts that ensure that the City of Santa Clarita and Santa Clarita Valley are placed within single districts and appropriately join us with communities where we share a variety of common interests.

Finally, on behalf of the residents of Santa Clarita and the City Council, I would like to request that the Commission hold a hearing in Santa Clarita after the first draft maps are released for public review. There is a strong interest in our area to have the Citizens Redistricting Commission come to the Santa Clarita Valley and hear first hand from our residents about their views on the redistricting process.

On behalf of the Santa Clarita City Council, thank you for allowing me to share our perspective with you today.

For additional information, please contact:

Santa Clarita Mayor Pro Tem Laurie Ender at [REDACTED]
Intergovernmental Relations Officer Michael Murphy at [REDACTED]

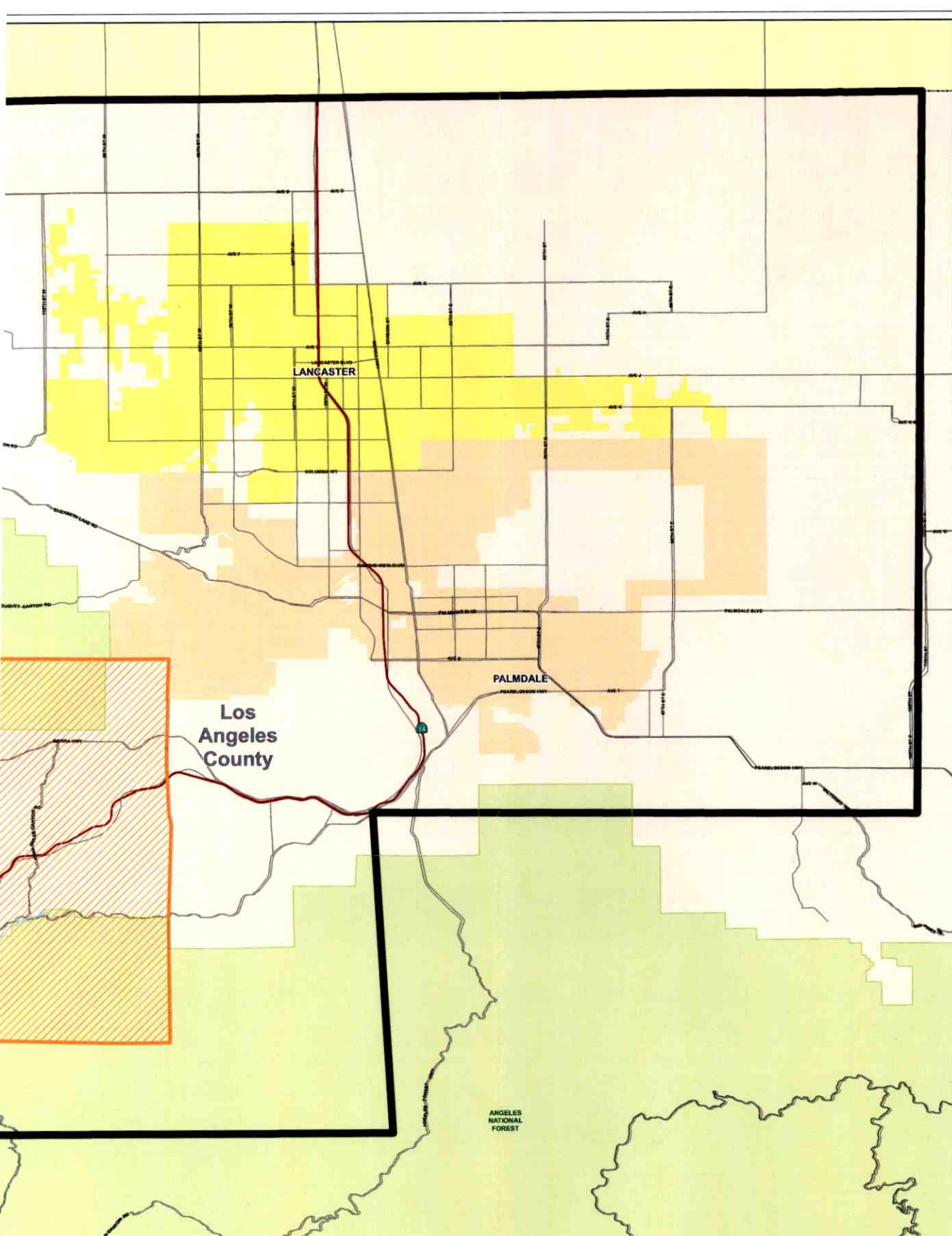


**Santa
Clarita
Valley**

City of Santa Clarita

Ventura
County

City of Los Angeles





City of **SANTA CLARITA**

City of Santa Clarita Preferred Option

| | | | |
|--|---|--|--|
| <ul style="list-style-type: none"> North LA County Area Santa Clarita Valley Angeles National Forest City of Santa Clarita | <ul style="list-style-type: none"> BURBANK GLENDALE LANCASTER | <ul style="list-style-type: none"> LOS ANGELES PALMDALE SAN FERNANDO Ventura County Cities | <ul style="list-style-type: none"> Kern Los Angeles County Ventura |
|--|---|--|--|



Map produced with permission granted by Ramil Michalek (Copyright 2010).
 OGVV Boundary and Forest Boundaries, 2010.
 The City of Santa Clarita does not warrant the accuracy of the data and assumes no liability for any errors or omissions.

72

Comments before Citizens Redistricting Commission
Saturday, April 30, 2011 City of San Fernando

- 04.30.11. Y

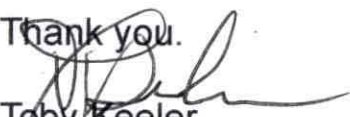
Members of the Redistricting Commission. Thank you for the opportunity to make public comment today. I live in the Old Topanga portion of the City of Calabasas which has recently been designated as a local historical landmark. Since the the 1800's Old Topanga Canyon Road has provided a vital route across the Santa Monica Mountains with many of the early homesteaders built houses along this mountain road. Since its incorporation in 1991, the City of Calabasas has proudly proclaimed itself to be "the gateway to the Santa Monica Mountains National Recreation Area in northern Los Angeles County.

As a two-time Planning Commissioner for the City of Calabasas, I understand and appreciate our distinct community, how it differs from the San Fernando Valley or Thousand Oaks, and why any redistricting should place the entire Las Virgenes area in the same Assembly, State Senate and Congressional Districts.

Our communities are defined as being west of the City of Los Angeles and north of the crest of the Santa Monica Mountains, including the cities of Calabasas, Agoura Hills, Hidden Hills, Westlake Village and surrounding unincorporated area. We share a common transportation corridor, school district and water district. Our knowledge and understanding of natural hazards such as brush fires, floods and landslides unite us during times of emergencies. Most especially, our common relationship to state and federal parklands and trail systems are a longstanding source of pride, and dedication to their protection.

From Malibu to Santa Monica, Pacific Palasades to Beverly Hills, and including hillside communities in Woodland Hills, West Hills, Tarzana, Encino, Sherman Oaks and Studio City, our district is defined by geographic continuity, and we would respectfully like to keep it that way.

Thank you.


Toby Keeler
Old Topanga

-04.30.11. Z

#73

David M. Brown



Citizens Redistricting Commission

May 30, 2011

1130 K Street, Suite 101,

Sacramento, CA 95814

Dear Commissioners,

Enclosed is my personal testimony on redistricting, based on my experience as a planning commissioner for the City of Calabasas for the past nineteen years, my service for the past twenty six years as Senate Rules appointee to the Santa Monica Mountains Conservancy Advisory Committee - which deals with planning issues in the Santa Monica Mountains in Los Angeles and Ventura counties - and finally on my many years of volunteer activities throughout the Las Virgenes Area.

My testimony will emphasize the area known locally as the "Las Virgenes area", a distinct "community of interest" separate from surrounding urban communities and supporting its own schools, utilities, and local governments. This area deserves to be treated as a single unit in redistricting decisions. To split this small "community of interest" further and place it into different districts would weaken its ability to represent its unique interests in Sacramento.

The Las Virgenes Area is the area along the 101 Freeway extending roughly from Woodland Hills to Thousand Oaks and extending southward to the crest of the Santa Monica Mountains. It includes the cities of Calabasas, Agoura Hills, Westlake Village, and Hidden Hills, along with large blocks of rural and undeveloped land . It is an area of large hills and canyons that contains a few pockets of urban development, but most of the area is building out at rural densities or has been committed to parks and open space. You might envision the Ventura Freeway Corridor in the Las Virgenes area as a "dumbbell-shaped" development with the large urban areas of Thousand Oaks and the San Fernando Valley at either end and a narrower corridor area of pockets of semi-rural development and open space connecting them.

We are not asking that the Las Virgenes area be set up as a separate district; it is much too small for that. What we do ask is that it be recognized as a distinct "community of interest" and not be divided or fragmented during the redistricting process since it has many unique characteristic that are not found in adjoining urban areas.

Sincerely,

A handwritten signature in black ink, appearing to read "David M. Brown".

David M. Brown

WHY THE CITIZENS' REDISTRICTING COMMISSION SHOULD PLACE THE ENTIRE LAS VIRGENES AREA (SEE MAP) IN THE SAME SENATE AND ASSEMBLY DISTRICTS

The Las Virgenes area in western Los Angeles County is a distinct "community of interest" comprising the cities of Calabasas, Agoura Hills, Westlake Village, and Hidden Hills and several unincorporated communities north of the Santa Monica Mountains. This area is not politically, culturally, or physically part of either the San Fernando or Conejo valleys.

This area is served by its own separate school district, water district, and sewer system, each different from those of the neighboring cities of Los Angeles, Malibu, and Thousand Oaks.

The Las Virgenes area is geographically contiguous and, unlike neighboring cities it is,

Entirely within the Las Virgenes Unified School District (LVUSD)

Entirely within the Las Virgenes Municipal Water District (LVMWD)

Entirely served by its own separate sewer system (operated by LVMWD)

Entirely served by the Los Angeles County Fire Department

The communities of the Las Virgenes area share a common "backbone" transportation corridor - the 101 Freeway - that is critical to local and regional transportation. The Ventura Corridor Areawide Plan seeks to coordinate the planning efforts and pending major projects in the local cities and unincorporated County areas to manage impacts of the Freeway.

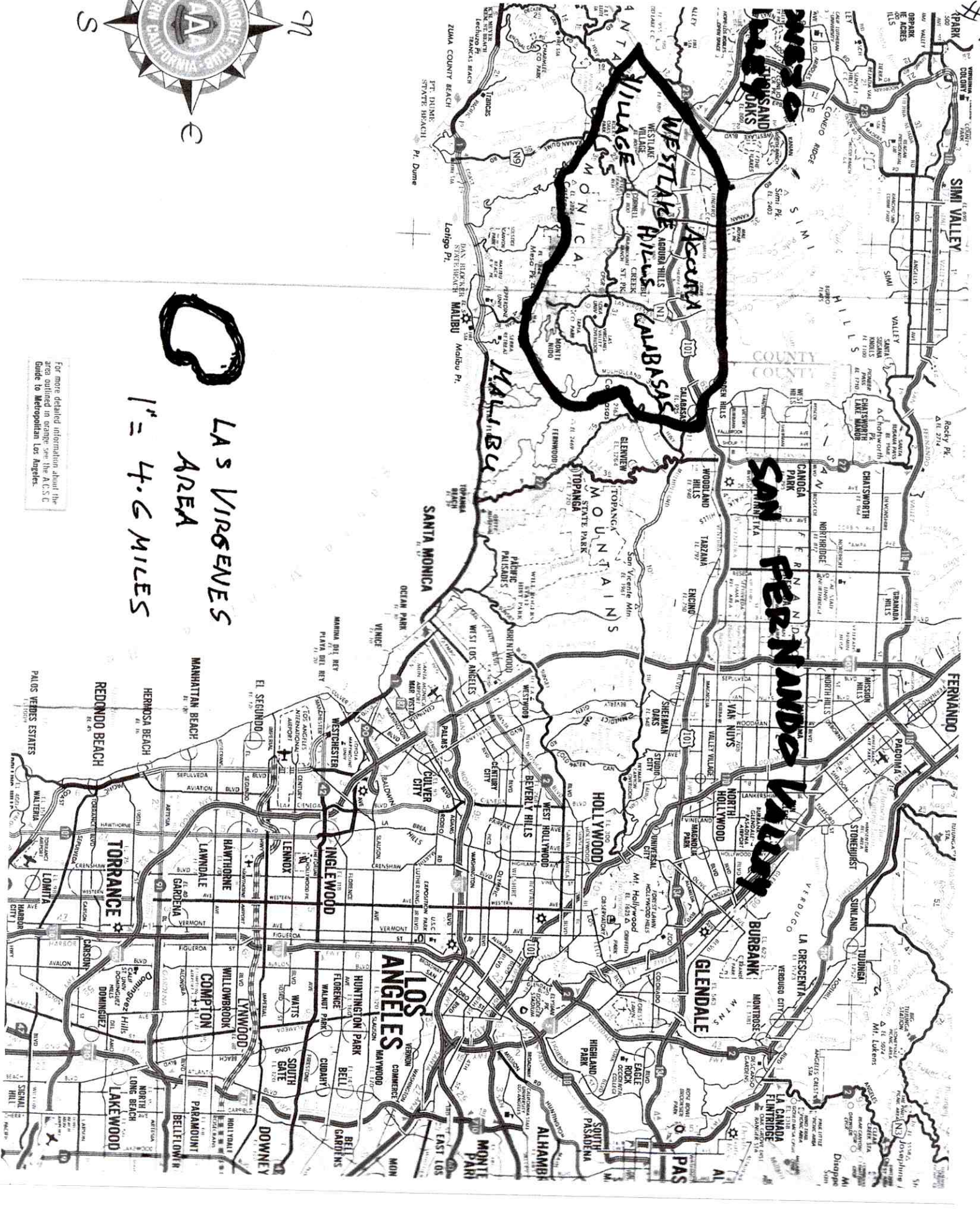
Most of the Las Virgenes area is rugged, mountainous topography posing a number of special planning and transportation challenges not found in other more urbanized areas.

Unlike adjoining urban areas, the entire Las Virgenes area is subject to a major wildland fire hazard. This requires special cooperation with Los Angeles County and with state and federal park agencies and community groups to mitigate this fire hazard.

Unlike nearby urban areas most streams in the Las Virgenes area have not been channelized. This creates special planning challenges not found in more urbanized areas.

There is a high level of community concern with planning and open space issues. The presence of tens of thousands of acres of state and federal parks in the area creates special planning challenges interfacing public and private development with protected parklands.

These special planning issues will best be represented by encompassing the entire Las Virgenes area within a single legislative district rather than dividing it among several districts.



**LAS VIRGENES
AREA**
1" = 4.6 MILES

For more detailed information about the area outlined in orange, see the A.C.S.C. Guide to Metropolitan Los Angeles.

SAN FERNANDO VALLEY

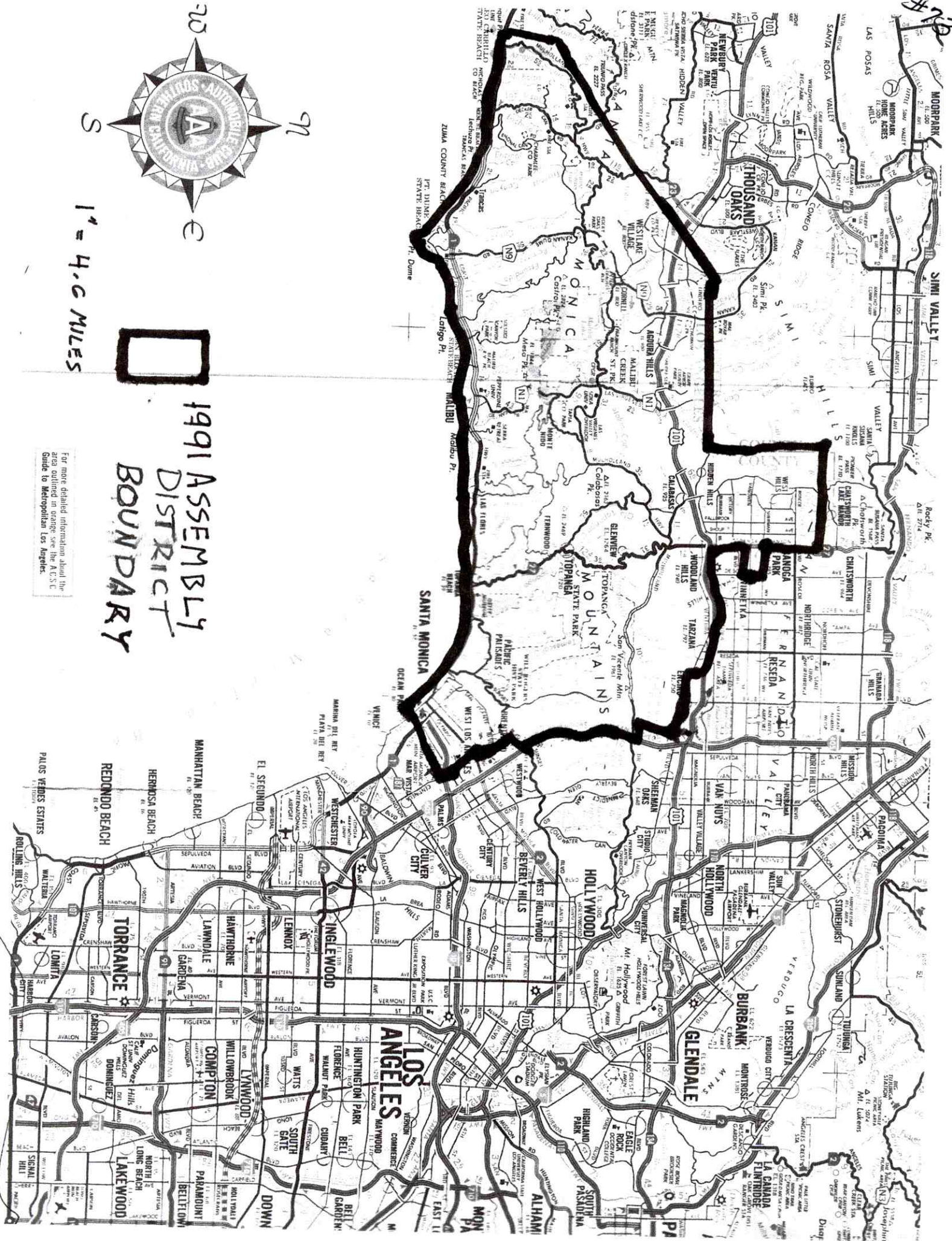


1" = 4.6 MILES



1991 ASSEMBLY
DISTRICT
BOUNDARY

For more detailed information about the area outlined in orange, see the A.C.S.C. Guide to Metropolitan Los Angeles.





BOARD OF SUPERVISORS COUNTY OF LOS ANGELES

821 KENNETH HAHN HALL OF ADMINISTRATION
500 WEST TEMPLE STREET / LOS ANGELES, CALIFORNIA 90012



ZEV YAROSLAVSKY
SUPERVISOR, THIRD DISTRICT

04.30.11. AA

April 30, 2011

Citizens Redistricting Commission
1130 K Street, Suite 101
Sacramento, California 95814

Dear Members:

Thank you for this opportunity to present my testimony regarding the drawing of boundary lines for California State Senate and Assembly and United States Congressional districts.

It's been my privilege to represent the Third District on the Los Angeles County Board of Supervisors since December 1994.

Traditional redistricting principles, and the criteria this Commission is required to use, emphasize the creation of districts that are compact and cohesive; that keep "communities of interest" together. The Third Supervisorial District contains nearly two million people, nearly half of whom reside in Senate District 23. This Senate District is an example of one of the most compact and cohesive Senate Districts in the entire County of Los Angeles. It unites three adjacent, interlocking communities of interest: the greater Westside, the Santa Monica Mountain foothill regions of the San Fernando Valley (SFV), and the entire Las Virgenes/Conejo Valley region. It includes the entire Santa Monica Mountains National Recreation Area (SMMNRA) and half of our County's beaches. Over 33 million people visit these beaches and the SMMNRA each year.

These three communities of interest share common boundaries comprising the Ventura County line and the Pacific Ocean. They are connected across the Valley to each other by the US 101 Freeway and from the Valley to the City of Malibu, the Pacific Coast Highway (PCH), Pacific Palisades, the City of Santa Monica and the greater Westside by the cross-mountain roads of Topanga Canyon Blvd (SR27), Malibu Canyon and Kanan Road. For the past 20 years, the collective voices of these Westside, coastal, mountain, and SFV foothill communities of interest have had great influence on the priorities of the Santa Monica Mountains Conservancy, State Parks, and the National Park Service in targeting key acquisitions such as Ahmanson Ranch and Soka University (King Gillette Ranch).

The integrity of these communities is evident in many ways:

- The Los Angeles Times' "Mapping LA" project identifies 16 "regions" in LA County, including the Westside, the San Fernando Valley, and the Santa Monica Mountains
- Each of these regions has formed a Council of Governments (COG) to represent its interests – the Westside Cities COG, the San Fernando Valley COG, and the Malibu/Las Virgenes COG
- "The Valley" has a long history of fighting for recognition as a cohesive community, including the effort in 2002 to secede from the rest of LA. Numerous entities treat the Valley as a discrete unit – from business groups which have formed numerous valley-wide organizations (Valley Industry & Commerce Association, Economic Alliance of the San Fernando Valley), to community groups which routinely use the Valley to define themselves (Valley Interfaith Council) to the media (San Fernando Valley Business Journal) to government (SFV City Hall).
- The greater Westside - including West Los Angeles, West Hollywood, Beverly Hills, Santa Monica, Pacific Palisades, Topanga and Malibu - is known locally, regionally and even nationally as a community bound together by a common culture and economy. Together it must confront a range of issues including transportation and traffic; planning and zoning; acquiring and preserving precious open space for public use and enjoyment; striking the right jobs and housing balance; and much more.
- The Las Virgenes/Conejo Valley area includes the western portion of the Santa Monica Mountains and the cities of Calabasas, Agoura Hills, Hidden Hills, and Westlake Village. These are all County "contract cities" and are served as a unit by the same Sheriff's Station, the same Fire Stations and the County Services Center in Calabasas; by community organizations, community newspapers, and by the Las Virgenes Unified School District.

These three cohesive communities form a logical State Senate District. They are bound together by the Santa Monica Mountains, whose residents confront many of the same issues whether they live near Franklin Canyon or Surfrider Beach: emergency preparedness and response; hillside planning and development; stormwater runoff; lack of public transportation; and many other concerns. And mountains residents also form communities of interest with their neighbors to the north and south, in the Valley and on the Westside.

It is for these reasons that I urge the Citizen's Commission to adopt the 1991 district lines that bound together the Santa Monica Mountains, the Westside, parts of the Valley that hug the Santa Monica Mountains along the 101 corridor and the Las Virgenes/Conejo area together in one Senate District within the County of Los Angeles. From transportation corridors, fire protection, watersheds and economic drivers like tourism, to recreational and employment destinations and the imperative of preserving open space in the Santa Monica Mountains, we have much in common. The challenges

that bind us are proven opportunities to forge solutions that strengthen all of our communities.

The principles discussed above – respecting the integrity of the San Fernando Valley, the greater Westside, the Las Virgenes/Conejo Valley region, and the Santa Monica Mountains range, as well as the shared interests that connect them – should similarly be respected when drawing boundaries for the other State Senate Districts, as well as Assembly and Congressional Districts, in this region.

Thank you for your attention to our perspective.

Sincerely,

A handwritten signature in black ink, appearing to read 'Zev Yaroslavsky', written in a cursive style.

ZEV YAROSLAVSKY
Supervisor, Third District