

Statement in Support of the Antelope Valley Board of Trade

Proposal for Redistricting

By

Dr. Kenneth W. Santarelli



I am speaking as a private citizen, an aerospace industry retiree, a long time Antelope Valley resident, and as an educator. Our high desert region has historically been underserved, for the engineering disciplines, by higher education. Our children have historically had to leave the region or commute long distances to acquire degrees in engineering. Only recently has the region been able to achieve sufficient interest from state universities to begin developing locally offered baccalaureate and graduate engineering programs.

The high desert region is known as Aerospace Valley and our unique environment has attracted the development of national assets for both government and commercial flight test and research. Government activities such as the Naval Air Weapons Development Center at China Lake, the Air Force Flight Test Center, the Air Force Test Pilot School, the Air Force Research Laboratory, Dryden Flight Research Center – all located at Edwards Air Force Base, and Air Force Plant 42 at Palmdale regional Airport all exemplify the national assets regionally located in the high desert. Similarly, commercial high technology organizations located in this region include the Lockheed Martin Skunk Works, Northrop Grumman, the Boeing Company, and at Mojave Air and Space Port, firms include Scaled Composites, XCOR, Orbital Sciences, and the National Test Pilot School. Near Victorville aerospace firms include General Atomics and GE Flight Systems.

All of the organizations that I have mentioned are heavily dependent on a highly skilled, highly trained, and well educated workforce that is heavily dependent on engineering. Due to our unique desert environment our industry commonly suffers from being able to retain employees recruited from other regions of the state and the nation. The growth of the renewable energy industry in this region from both wind and solar technologies adds additional common demands and incurs common issues in the need for higher education. Due to the high technology nature of our industries, which bind this region together, we have an initiative to “home grow” our technical workforce. Locally trained engineers are a better retention investment and are important for this region’s economic development.

The national assets and the high technology industries that I have mentioned are disbursed throughout the high desert but are bound together in common interests and as a result of common issues in one contiguous area. I, therefore, support the Antelope Valley Board of Trade redistricting proposal for the high desert. Thank you for your attention and your time.

Scanned k.T.
5/5

05.01.11.Q

#47





Antelope Valley Assembly District

May 1st, 2011

Presented to the Citizens Redistricting Commission



-  Proposed District
-  County Line

— REVISION OF N. Bdy TO COINCIDE WITH TEHACHAPI Mtns.
 RIDGECREST SHOULD STAY W/ KERN CO.
 → DIRECTION TO MOVE EAST Bdy TO CAPTURE POPULATION AS NEARER.
 LEO MERCY, SPEAKER 47 (5/1/11)

Antelope Valley Assembly District

The Antelope Valley is made up of the High Desert Communities in both northern Los Angeles County and eastern Kern County. These include the cities of Palmdale and Lancaster in Los Angeles County and the communities of Rosamond, Mojave, Boron, California City and Ridgecrest in Kern County

It represents roughly one half of the population of the High Desert regions of Los Angeles, Kern, San Bernardino and Inyo counties.

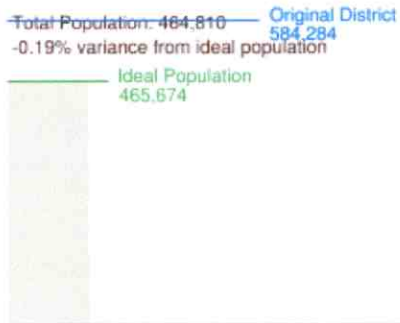
It is the desert floor as bounded by the Tehachapi Mountains on the northwest, the San Gabriel Mountains to the Southwest and the San Bernardino County line to the East.

Several aspects make our community unique. This area is in a geologically separate water basin, an environmentally distinct air basin and ecologically distinct high desert climate.



Redistricting Data: My Assembly District 36

Population



Universe: Total Population
 Datasource: U.S. Census Bureau Decennial Census
 Data Year: 2010
 Data Level: Census Block

Total Population	464,810
Ideal	465,674
Variance	-0.19%
Original District	584,284

	My District 36
Citizen Voting Age Population	254,783

	District
Hispanic or Latino	41.02% 190,652
White alone	38.37% 178,357
Black or African American alone	13.41% 62,352
Asian	3.77% 17,520
Some Other Race	0.76% 3,514
Two or More Races	2.67% 12,415

Additional Information

Representation of current districts: Primarily 36th Assembly District, with portions of the 32nd and 34th

The unemployment rate is approximately 18% throughout the district, with a housing cost of \$50-\$80 per square foot. This differs greatly from Bakersfield and Central Valley communities, some with even higher unemployment as well as the Santa Clarita/Ventura County areas with unemployment around 8% and housing costs nearing \$250 per square foot.

Aerospace has historically been one of the booming businesses in the Antelope Valley. Edwards Air Force Base, USAF Plant 42, and the China Lake Naval Weapons facility and Virgin Galactic at Mojave Spaceport are major economic engines.

Recently, the Antelope Valley has become the green energy capital of North America. Wind and solar resources are better here than anywhere else in the country with dozens of wind and solar energy production facilities being developed throughout Kern and Los Angeles County.

Educationally, the entire High Desert, including northern Los Angeles, eastern Kern and northern San Bernardino counties have joined forces to promote a comprehensive four year university as the next California State University campus. The nearest CSU is over sixty miles from almost any point in the High Desert.

Several government agency boundaries already cross the Kern/Los Angeles County line in order to provide local services. These include the Antelope Valley-East Kern Water Agency and the Antelope Valley Community College District.

Demographically, we have a fast growing Hispanic Community. Splitting us outside of the High Desert would dilute the influence of our Hispanic community.

Not everything from this list will be relevant to your community, but highlight anything that helps demonstrate what residents value and what gaps and barriers exist.

Conclusion

In every sense, the Antelope Valley is a community of interest that transcends artificial county lines. Environmentally, demographically, geologically, socially and economically we are distinct from areas outside of our mountain boundaries. This Assembly District protects the interests of our community and follows the guidelines set up in the California Constitution. Our population is such that there is no way to combine us with a geographically separate community in any direction and keep us intact in an Assembly District.

Our High Desert neighbors to the East, in the Victor Valley/Mojave Desert communities of San Bernardino and Inyo Counties, are in the same position. For all of our commonalities with those communities, this Assembly District ought to be nested with them to form one all-encompassing High Desert Senate District.

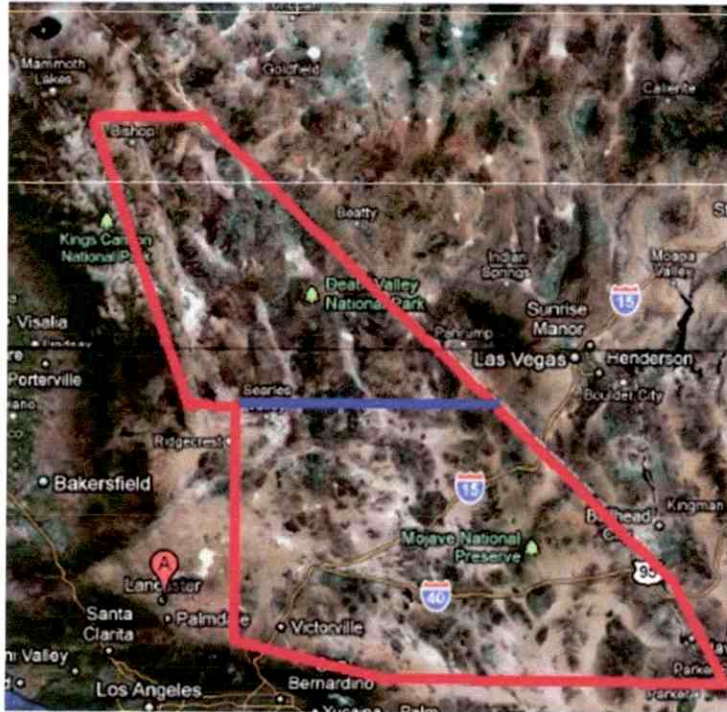
Scanned
KITI: 5/5

-05.01.11. T

#56

Victor Valley/Mojave Desert Assembly District

May 1st, 2011

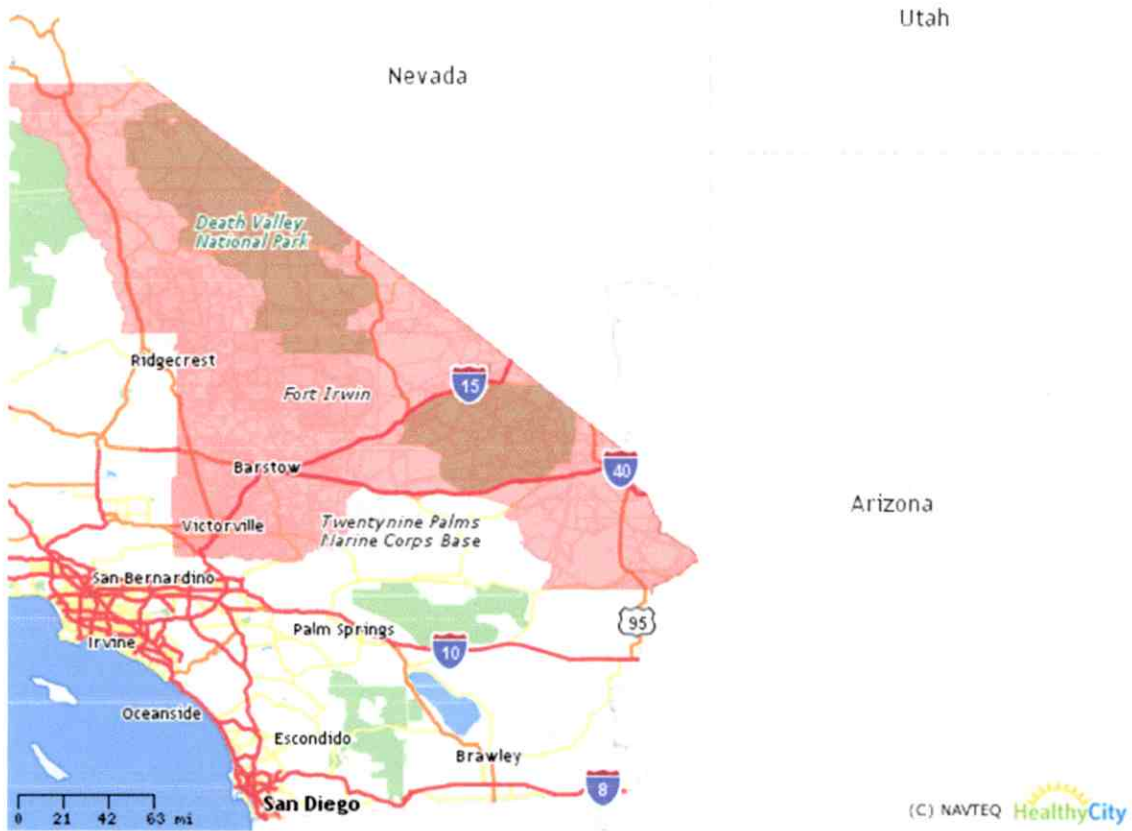


— Proposed District Lines (Rough)

— County Line (Inyo/San Bernardino)

Victor Valley/High Desert Assembly District

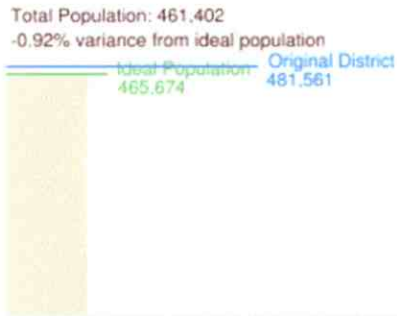
This area is made up primarily of the Victor Valley communities of Victorville, Apple Valley, Hesperia and Adelanto. These communities along with the nearby suburbs in close proximity account for over 75% of the population. From there it makes sense to include the sparsely populated but socially, environmentally and demographically similar communities in the remainder of the desert communities of San Bernardino and Inyo counties along the California/Nevada border. It covers roughly one half of the High Desert region of Kern, Inyo, Los Angeles and San Bernardino counties.



Redistricting Data: My Assembly District 59

The previous 59th AD was one of the worst examples of a hatchet job under the old system. It split off half of the Victor Valley cities into a different Assembly District and added far off communities in Los Angeles County's San Gabriel Valley. By following common sense geographic communities we not only keep the Victor Valley/Mojave Desert intact, we greatly increase the diversity of the growing Hispanic community.

Population



Universe: Total Population
 Datasource: U.S. Census Bureau Decennial Census
 Data Year: 2010
 Data Level: Census Block

Total Population	461,402
Ideal	465,674
Variance	-0.92%
Original District	481,561

Citizen Voting Age Population



Universe: Total Population
 Datasource: Statewide Database at the University of California Berkeley
 Data Year: 2010
 Data Level: Census Block

	My District 59	Original District
Citizen Voting Age Population	261,895	312,121

	My District 59	Original District
Hispanic or Latino	39.45% 182,017	31.85% 153,390

Additional Information

Conclusion

In every sense, the Victor Valley/Mojave Desert is a community of interest. Environmentally, demographically, geologically, socially and economically we are distinct from areas outside of our mountain boundaries. This Assembly District protects the interests of our community and follows the guidelines set up in the California Constitution. Our population is such that there is no way to combine us with a geographically separate community in any direction and keep us intact in an Assembly District.

Our High Desert neighbors to the west, in the Antelope Valley communities of Los Angeles County and Kern County, are in the same position. For all of our commonalities with those communities, this Assembly District ought to be nested with them to form one all-encompassing High Desert Senate District. Community leaders throughout the High Desert worked together to develop these proposals.

#57

-05.01.11.0

#57

CITY OF VICTORVILLE



760.955.5000
FAX 760.245.7243
ville@ci.victorville.ca.us
<http://ci.victorville.ca.us>

14343 Civic Drive
P.O. Box 5001
Victorville, California 92393-5001

May 1, 2011

Dear Commissioners:

I am unable to attend today's hearing but would like to share with you the position of the City of Victorville as the Commission considers how the new Assembly, Senate, Congressional and Board of Equalization Districts should be drawn.

The High Desert is its own community of interest that crosses county lines and the population centers of those counties have different policy interests and legislative needs than the High Desert portions of those counties. The City of Victorville strongly recommends that the Committee consider the following legislative district lines for the High Desert:

1. One Assembly District covering the Antelope Valley/East Kern area of the High Desert, bounded by the Tehachapi Mountains and the San Gabriel Mountains. This would include Palmdale, Lancaster, Rosamond, Mojave, Boron, California City and Ridgecrest.
2. Another Assembly District covering the Victor Valley portion of the High Desert that includes all of northern San Bernardino County including Victorville, Hesperia, Adelanto, Apple Valley and Barstow.
3. The two Assembly Districts should be nested for one High Desert Senate seat.
4. A Congressional District covering the portion of the High Desert in northern San Bernardino County including Victorville, Hesperia, Adelanto, Apple Valley and Barstow.
5. The High Desert is its own unique area that identifies much more closely with the Central Valley than the rest of Los Angeles due to our agriculture, viticulture, water and air policy needs. With a district as large as the Board of Equalization's, this is an important factor.

It is the City of Victorville's desire that the district lines be drawn in a fair and equitable manner. We would therefore respectfully request that the Commission take into consideration the recommendations as outlined above.

Sincerely,

Ryan McEachron
Mayor

RESOLUTION NO. 11-014

A RESOLUTION OF THE CITY COUNCIL OF THE CITY OF VICTORVILLE REQUESTING THAT THE CITIZENS REDISTRICTING COMMISSION RECOGNIZE THE HIGH DESERT COMMUNITIES AS A COMMUNITY OF INTEREST FOR THE PURPOSE OF REDRAWING BOARD OF EQUALIZATION, CONGRESSIONAL AND LEGISLATIVE DISTRICT LINES

WHEREAS, the City of Victorville is located in the High Desert region of the County of San Bernardino; and

WHEREAS, the High Desert region encompasses portions of the Counties of Kern, Los Angeles and San Bernardino; and

WHEREAS, the population centers of the Counties of Kern, Los Angeles and San Bernardino in the Central Valley, Los Angeles Basin and Inland Empire, respectively, have different policy interests and legislative needs than the High Desert portions of those counties; and

WHEREAS, the High Desert is geographically and geologically distinct from the other areas in Kern, Los Angeles and San Bernardino Counties, separated physically by the vast Tehachapi, San Gabriel and San Bernardino Mountain ranges; and

WHEREAS, the communities making up the High Desert share similar needs in terms of water policy, aerospace and defense retention, clean energy development, air resources, transportation, mining and health care availability that are unique among us and transcend county lines; and

WHEREAS, the High Desert is currently split among five Assembly Districts when the population justifies two, two Senate Districts when the population justifies one, and three congressional districts when the population justifies portions of two; and

WHEREAS, the Citizens Redistricting Commission is tasked with redrawing lines and is instructed under statute that "the geographic integrity of every city, county, city and county, neighborhood or community of interest shall be respected."

NOW, THEREFORE, BE IT RESOLVED THAT the City of Victorville urges the members of the Citizens Redistricting Commission to recognize the powerful bonds that make the High Desert a community of interest that transcends county lines and should be respected in the redistricting process; and

NOW, THEREFORE, BE IT FINALLY RESOLVED THAT the City of Victorville urges the members of the Citizens Redistricting Commission to undo the damage done in past politically motivated redistricting procedures by keeping the High Desert unified to every extent possible.

57

Resolution No. 11-014

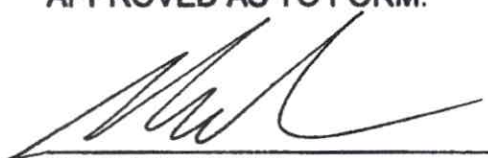
PASSED, APPROVED AND ADOPTED this 19th day of APRIL 2011.


MAYOR OF THE CITY OF VICTORVILLE

ATTEST:

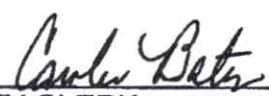

CITY CLERK

APPROVED AS TO FORM:


CITY ATTORNEY

I, CAROLEE BATES, City Clerk of the City of Victorville and ex-officio Clerk to the City Council of said City, DO HEREBY CERTIFY that the foregoing is a true and correct copy of Resolution No. 11-014 which was adopted at a meeting held on the 19th day of April 2011, by the following roll call vote, to wit:

- AYES: Councilmembers, Cabriales, Kennedy, McEachron, Rothschild and Valles
- NOES: None
- ABSENT: None
- ABSTAIN: None


CITY CLERK



#57

Town of Apple Valley

14955 Dale Evans Parkway • Apple Valley, California 92307

I HEREBY CERTIFY that the attached copy of Resolution Number 2011-12, to which this certificate is attached, is a full, true, and correct copy of the original record maintained in my office, which was duly adopted by the Town Council of the Town of Apple Valley on April 26, 2011.

Dated this 27th day of April 2011.

LA VONDA M-PEARSON, CMC
OFFICE OF THE TOWN CLERK
TOWN OF APPLE VALLEY

By: *Patty Heyle*
Patty Heyle, Deputy

(SEAL)

RESOLUTION No. 2011-12

A RESOLUTION OF THE TOWN COUNCIL OF THE TOWN OF APPLE VALLEY ADOPTING A RESOLUTION URGING THE CITIZENS REDISTRICTING COMMISSION TO KEEP THE HIGH DESERT REGION UNIFIED

WHEREAS, the Town of Apple Valley is located in the High Desert region of the County of San Bernardino, and

WHEREAS, the High Desert region encompasses portions of the Counties of Kern, Los Angeles and San Bernardino, and

WHEREAS, the population centers of the Counties of Kern, Los Angeles and San Bernardino in the Central Valley, Los Angeles Basin and Inland Empire, respectively, have different policy interests and legislative needs than the High Desert portions of those counties, and

WHEREAS, the High Desert is geographically and geologically distinct from the other areas in Kern, Los Angeles and San Bernardino Counties, separated physically by the vast Tehachapi, San Gabriel and San Bernardino Mountain ranges, and

WHEREAS, the communities making up the High Desert share similar needs in terms of water policy, aerospace and defense retention, clean energy development, air resources, transportation, mining and health care availability that are unique among us and transcend county lines, and

WHEREAS, the High Desert is currently split among five Assembly Districts when the population justifies two, two Senate Districts when the population justifies one, and three congressional districts when the population justifies portions of two, and

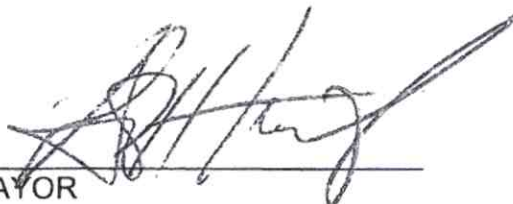
WHEREAS, the Citizens Redistricting Commission is tasked with redrawing lines is instructed under statute that "the geographic integrity of every city, county, city and county, neighborhood or community of interest shall be respected."

NOW, THEREFORE, BE IT RESOLVED that the Town Council of the Town of Apple Valley hereby:

1. Urges the members of the Citizens Redistricting Commission to recognize the powerful bonds that make the High Desert a community of interest that transcends county lines and should be respected in the redistricting process, and

2. Urges the members of the Citizens Redistricting Commission to undo the damage done in past politically motivated redistricting procedures by keeping the High Desert unified to all extents possible.

PASSED, APPROVED AND ADOPTED this 26th day of April, 2011.


MAYOR

ATTEST:

TOWN CLERK

Town of Apple Valley
Resolution No. 2011-12

STATE OF CALIFORNIA

COUNTY OF SAN BERNARDINO

TOWN OF APPLE VALLEY

I, LA VONDA M-PEARSON, Town Clerk for the Town of Apple Valley, Apple Valley, California, do hereby certify that Resolution No. 2011-12, duly and regularly adopted by the Town Council at a meeting thereof held on the 26th day of April, 2011 by the following vote:

- AYES: Council Members Coleman, Emick, Roelle, Mayor Pro Tem Stanton, Mayor Nassif
- NOES: None.
- ABSTAIN: None.
- ABSENT: None.

IN WITNESS WHEREOF, I have hereunto set my hand and affixed the official seal of the Town of Apple Valley, California, this 27th day of April 2011.

LA VONDA M-PEARSON, CMC
TOWN CLERK

By: *Patty Hevle*
Patty Hevle, Deputy

SEAL



VICTOR VALLEY ASSOCIATION OF REALTORS® #57

11890 HESPERIA ROAD
HESPERIA, CA 92345

VOICE: 760.244.8841

FAX: 760.244.7387

RESOLUTION OF THE Victor Valley Association of REALTORS® WHEREAS, the Victor Valley Association of REALTORS® is located in the High Desert region of the County of San Bernardino , and

WHEREAS, the High Desert region encompasses portions of the Counties of Kern, Los Angeles and San Bernardino, and

WHEREAS, the population centers of the Counties of Kern, Los Angeles and San Bernardino in the Central Valley, Los Angeles Basin and Inland Empire, respectively, have different policy interests and legislative needs than the High Desert portions of those counties, and

WHEREAS, the High Desert is geographically and geologically distinct from the other areas in Kern, Los Angeles and San Bernardino Counties, separated physically by the vast Tehachapi, San Gabriel and San Bernardino Mountain ranges, and

WHEREAS, the communities making up the High Desert share similar needs in terms of water policy, aerospace and defense retention, clean energy development, air resources, transportation, mining and health care availability that are unique among us and transcend county lines, and

WHEREAS, the High Desert is currently split among five Assembly Districts when the population justifies two, two Senate Districts when the population justifies one, and three congressional districts when the population justifies portions of two, and

WHEREAS, the Citizens Redistricting Commission is tasked with redrawing lines is instructed under statute that "the geographic integrity of every city, county, city and county, neighborhood or community of interest shall be respected,"

THEREFORE BE IT RESOLVED THAT, The Victor Valley Association of REALTORS® urges the members of the Citizens Redistricting Commission to recognize the powerful bonds that make the High Desert a community of interest that transcends county lines and should be respected in the redistricting process, and

THEREFORE BE IT FINALLY RESOLVED THAT, the Victor Valley Association of REALTORS® urges the members of the Citizens Redistricting Commission to undo the damage done in past politically motivated redistricting procedures by keeping the High Desert unified to all extents possible.

Cecil Volsch, President



RESOLUTION OF THE VICTORVILLE CHAMBER OF COMMERCE

WHEREAS, the Victorville Chamber of Commerce is located in the High Desert region of the County of San Bernardino, and

WHEREAS, the High Desert region encompasses portions of the Counties of Kern, Los Angeles and San Bernardino, and

WHEREAS, the population centers of the Counties of Kern, Los Angeles and San Bernardino in the Central Valley, Los Angeles Basin and Inland Empire, respectively, have different policy interests and legislative needs than the High Desert portions of those counties, and

WHEREAS, the High Desert is geographically and geologically distinct from the other areas in Kern, Los Angeles and San Bernardino Counties, separated physically by the vast Tehachapi, San Gabriel and San Bernardino Mountain ranges, and

WHEREAS, the communities making up the High Desert share similar needs in terms of water policy, aerospace and defense retention, clean energy development, air resources, transportation, mining and health care availability that are unique among us and transcend county lines, and

WHEREAS, the High Desert is currently split among five Assembly Districts when the population justifies two, two Senate Districts when the population justifies one, and three congressional districts when the population justifies portions of two, and

WHEREAS, the Citizens Redistricting Commission is tasked with redrawing lines is instructed under statute that "the geographic integrity of every city, county, city and county, neighborhood or community of interest shall be respected,"

THEREFORE BE IT RESOLVED THAT, The Victorville Chamber Board of Directors urge the members of the Citizens Redistricting Commission to recognize the powerful bonds that make the High Desert a community of interest that transcends county lines and should be respected in the redistricting process, and

THEREFORE BE IT FINALLY RESOLVED THAT, the Victorville Chamber membership urges the members of the Citizens Redistricting Commission to undo the damage done in past politically motivated redistricting procedures by keeping the High Desert unified to all extents possible

Sharon Rodriguez
Sharon Rodriguez, Chairman of the Board

04/29/11
Date