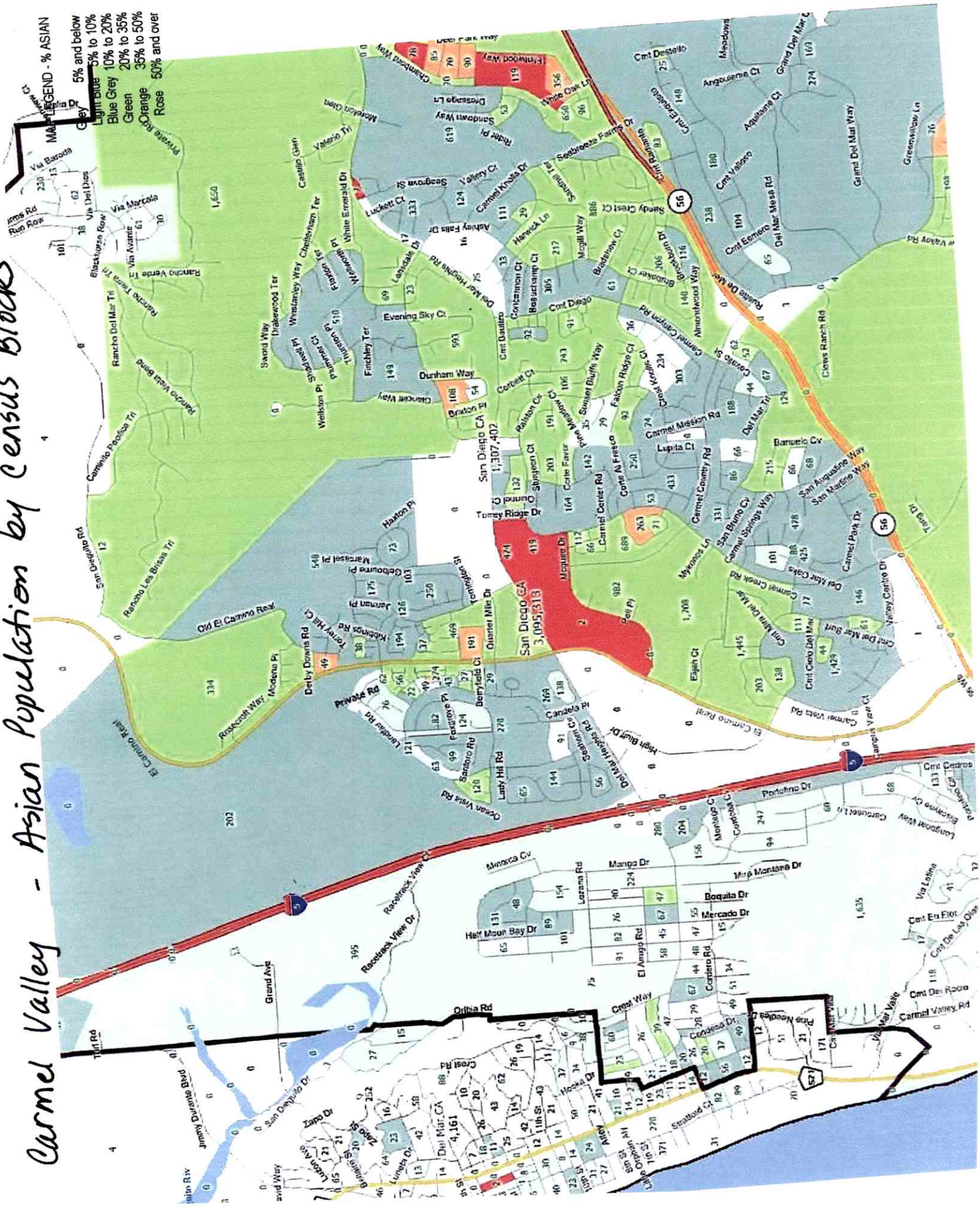


Carmel Valley - Asian Population by Census Blocks

MAP LEGEND - % ASIAN
 5% and below
 Light Blue 5% to 10%
 Blue Grey 10% to 20%
 Green 20% to 35%
 Orange 35% to 50%
 Rose 50% and over



MAP LEGEND - % ASIAN

- Grey 5% and below
- Light Blue 5% to 10%
- Blue Grey 10% to 20%
- Green 20% to 35%
- Orange 35% to 50%
- Red 50% and over

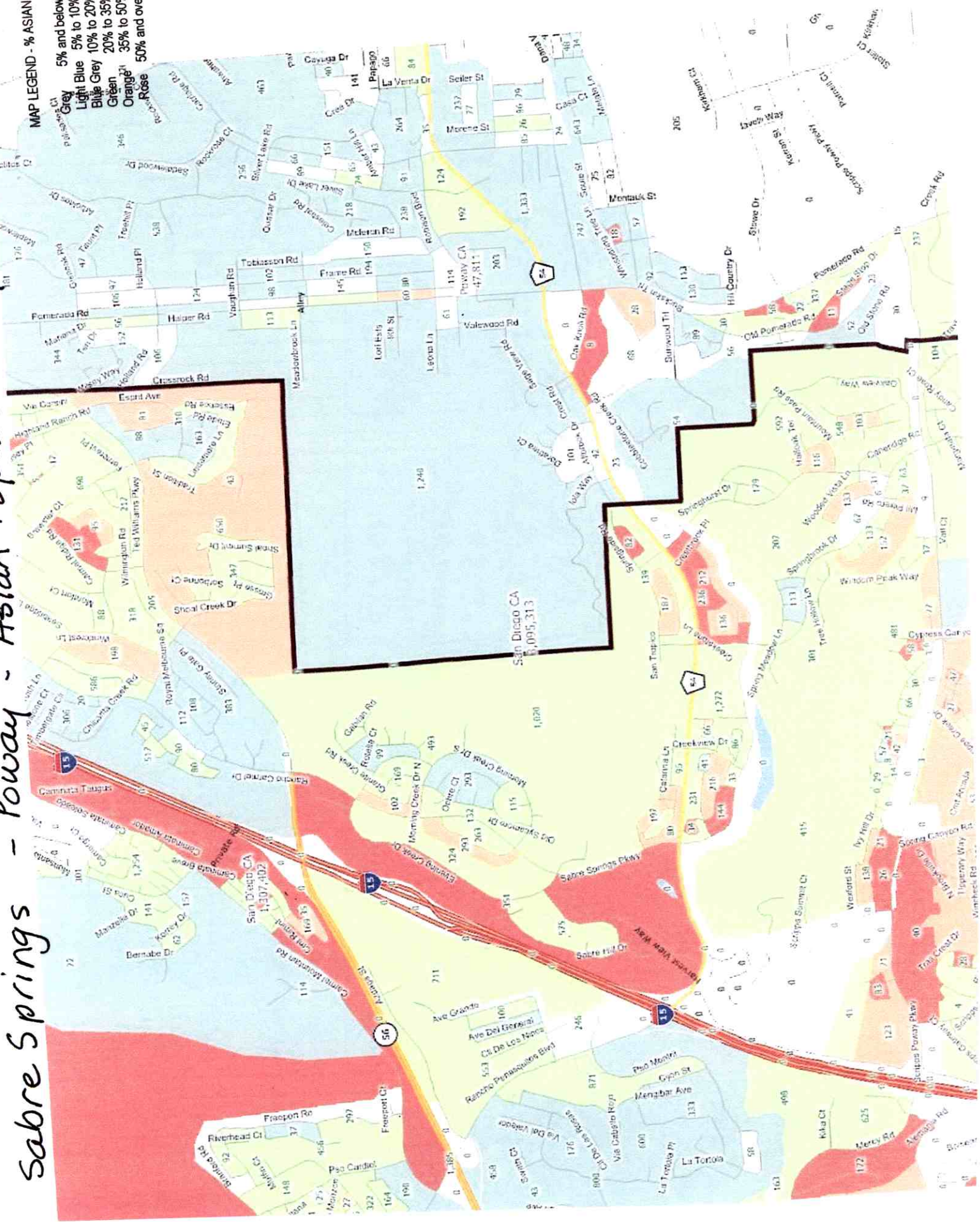
Rancho Bernardo - Asian Population by Census Blocks



Sabre Springs - Poway - Asian Population by Census Blocks

MAP LEGEND - % ASIAN

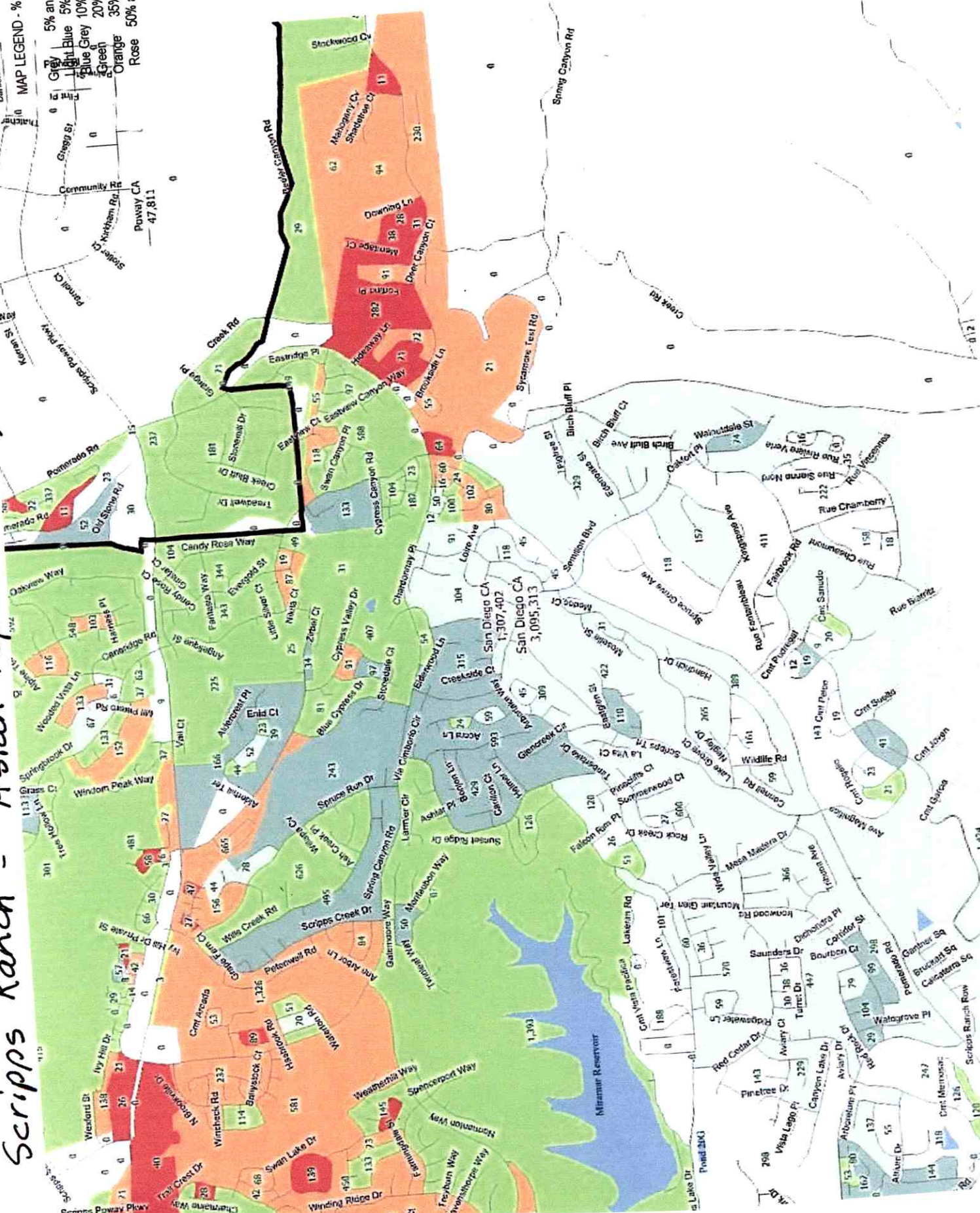
- Grey 5% and below
- Light Blue 5% to 10%
- Blue Grey 10% to 20%
- Green 20% to 35%
- Orange 35% to 50%
- Red 50% and over



Scriptis Ranch - Asian Population by Census Blocks

MAP LEGEND - % ASIAN

- Grey 5% and below
- Light Blue 5% to 10%
- Blue Grey 10% to 20%
- Blue 20% to 35%
- Green 35% to 50%
- Orange 50% and over
- Rose



05.13.11G - #20 Jose Fragoza

Based on the population figures for Escondido, San Marcos, Vista and Oceanside, it looks like a new 74th. A.D. could be redistricted to be defined by the combined boundaries of those four cities. The 2010 census figures for the state require each each Assembly district to be as close as possible to 465,684. The total population of the four North County cities is 486,612, which is 22,938 over the ideal A.D. population but the deviation percentage is only 4.93, which is within the deviation limit of 5 percent set by the Citizens Redistricting Commission.

Here are the population figures for those four North County cities:

City	Population	Latino	%Latino
Escondido	143,911	70,326	48.87
San Marcos	83,781	30,697	35.88
Vista	93,834	45,380	36.64
Oceanside	167,086	59,947	48.36
Total	486,612	206,350	42.23

I think it can be argued that those four cities are a "community of interest" because:

1. All four cities are served by CSUSM and Palomar Community College; *m, Costa College*
2. All four cities are connected by State Highway 78 and are served by the Sprinter;
3. All four cities share access to a commercial corridor along Highway 78;
4. All four cities have a large Latino population, ranging from 35.88 percent to 48.87 percent, which means all of them share similar challenges in providing educational and other services to a growing Latino population;
5. All four cities have a tradition of observing festivals, holidays and traditions common in the Latino culture, e.g., swap meets, cinco de mayo, guelaguetza, posadas, etc.;

The new 74th. A.D. we are proposing would be "compact and contiguous," as required by the redistricting principles being followed by the Citizens Redistricting Commission, since it would consist of four adjacent cities connected by a commonly traveled state highway that can take a person from one end to the other end of the proposed district.

California voting right act.

#20

RE DRAW CA

Comment on CA

Access Data

My Account / Contact / About

State of California

Map thematic data >

Map points of interest >

Edit area >

Zoom to State

California

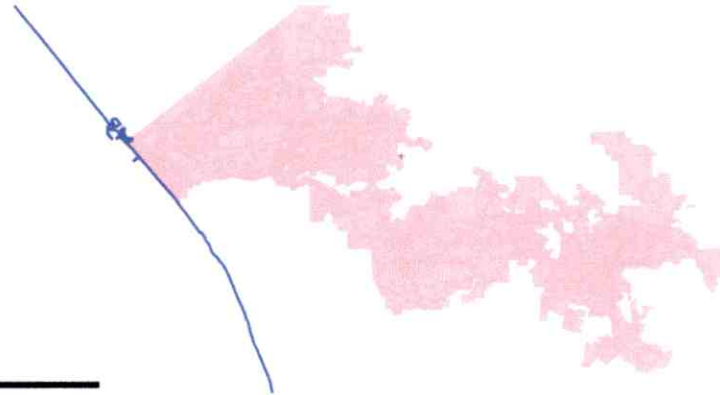
Go

Find your district

Show other boundaries



8 mi



My Assembly District 74

Redistricting Data

This data panel presents key redistricting data calculated for the district or area you've selected above.

View as: [Charts](#) | [Table](#)

Compare your area to:

Original District = |

My Assembly District 74

Supporting Data

Data you added to the map is here as a chart or table. You can also add other data such as party, education, and health variables for this area.

View as: [Charts](#) | [Table](#)

Compare your area to:

Original District = |

[Change](#)

Population

Does your district meet the "equal population" requirement?

Total Population: 486,282
4.43% variance from ideal population
Ideal Population: 465,675
Original District: 492,971



Add data

Citizen Voting Age Population

Determine if your district falls under the protection of the federal Voting Rights Act.



Ethnicity / Race

- 42.18% Hispanic or Latino
- 44.76% White alone
- 2.99% Black or African American
- 6.77% Asian
- 0.55% Some Other Race
- 2.72% Two or More Races

~~000~~ #23

05.13.11 H -

California Citizens Redistricting Commission

Public Input Hearing

Friday, May 13, 2011

California State University San Marcos

McMahan House Great Room

San Marcos, CA 92096

6:00 pm – 9:00 pm

My name is Fabiola Gastelum and I live in Vista, CA and I have been a resident of North County for the past 17 years. Vista is located in the 74th assembly district, 38th senate district, and the 49th congressional district.

My community is representative of other areas in North County that are situated along the 78 freeway. The zone is bordered by the Pacific Ocean to the West, Riverside County to the East, and Orange County to the North. North County is the second most populous region in San Diego County after the City of San Diego (population 1,307,402) compared to 658,779 in North County cities and 486,604 in unincorporated areas (U.S. Census, 2010). Approximately forty miles north of the San Diego, CA, U.S. – Tijuana, BC, Mexico Border, North County has been home to predominantly White and affluent communities. Whites are still majority in the county; however, North County became more diverse with increase in Latino, Asian, and Pacific Islander communities during the last two decades. Latinos now comprise 26 percent of North County's residents (U.S. Census, 2010). The cumulative population in Oceanside, Vista, San Marcos, and Escondido is 488,612. In Vista Latinos became the majority group in 2010, now comprising 48% (compared to 41% White and 4% Asian) of 93,834 residents and 49% (compared to 40% White and 6% Asian) of 143,911 residents in Escondido. In Oceanside Latinos are 36% of the population (compared to 48% White, 6% Asian) of 167,086 residents and 37% of the population (compared to 49% White and 9% Asian) of 83,781 residents in San Marcos. African American and American Indian population decreased (U.S. Census, 2010).

Some neighborhoods with higher concentrations of Latino residents within each city are afflicted by commonly identified challenges including high rates of poverty, high unemployment rates, low levels of parental education, and higher school dropout rates. The poverty rate for individuals in San Diego County overall is 12.4%. For example, in the Townsite neighborhood of Vista where over 52% of residents are Hispanic, the overall poverty rate for individuals is 15.6% and ranges from 13.9% in CT 195.03 to 25.1% in CT 195.01. In San Diego County, the average high school graduation rate among Hispanics is 75.7% as compared with a 90.55% graduation rate among White students, and Vista is in the top five school districts in San Diego County for dropouts in grades 9-12 (San Diego County Report Card, 2005, calculated for 2003/2004). In the Vista Townsite neighborhood only 16% of residents are high school graduates. Additionally, 25.8% of Vista students are classified as English Learners with Spanish as their primary language. The median household income is \$62,758 in Oceanside, \$60,223 in Vista, \$60,903 in San Marcos and \$56,259 in Escondido compared to the county's \$62,820 (U.S. Census QuickFacts). 33% of the population in San Diego County reports speaking a language other than

English at home, 21.5% are persons born outside the United States, and 24.2% are persons under 18 years old (U.S. Census QuickFacts).

In North County, Latinos represents a young and growing segment of the population. Children (0-17) comprise 39% of the Latino population in North County. In comparison, non-Latino children make up only 21% of the region's non-Latino population (U.S. Census, 2000). Within North County school districts along the 78-corridor, Latino children are the largest student ethnic group comprising 55.9% of the student population (California Department of Education, 2010). Almost 95% of students are eligible for free and reduced price lunch in participating districts (California Department of Education, 2010). Twenty-five percent of students have been identified as English Learners and 95.1% of English Learners' first language is Spanish (California Department of Education, 2010). In every school district in North County, Latino students receive lower Academic Performance Index (API) scores than any other major ethnic group; English Learners and socio-economically disadvantaged students receive the lowest scores (California Department of Education, 2010). Latinos are highly under-represented in the teaching faculty in North San Diego County school districts, comprising only 12.6% of teachers (California Department of Education, 2010).

Thank you for your interest in learning more about my community.

References:

- California Department of Education. (2010). *District Enrollment by Ethnicity for 2009-10* [Data File]. Retrieved from <http://dq.cde.ca.gov/dataquest/>.
- U.S. Census Bureau. (2011). Population Distribution and Change: 2000 to 2010. Retrieved from <http://2010.census.gov/news/press-kits/operational-press-briefing/march-24-2011.html>.

25

|

31

District 66: Escondido, Ramona, Julian and East County

SPKR #

- 25 Kenneth Happel, Coordinator, Vista Tea Party Patriots
- 26 Dan Wiberg, Co-chairman, Poway Tea Party Patriots, Founder San Diego 2000 Affordable Housing Project, Community Youth Sports Activist
- 30 Mike Hunsaker, Member/Nominee Board Member/Community Representative, Valley Property Owners Association; Spokesperson, San Marcos Industrial Property Owners Association,
- 29 Lynne Welke R.N., Former San Diego County Mental Health / Aging and Independent Services Nurse
- 28 Mystie Bollaert, ADA Mobility Team, North County Transit District
- 27 Tom Tooker, Professional Electrician, Conservative Community Activist
- 31 NANCY GREGORY, COMPANY WORKER, UNEMPLOYMENT EXPERT
Submitted May 13, 2011, San Marcos Hearing

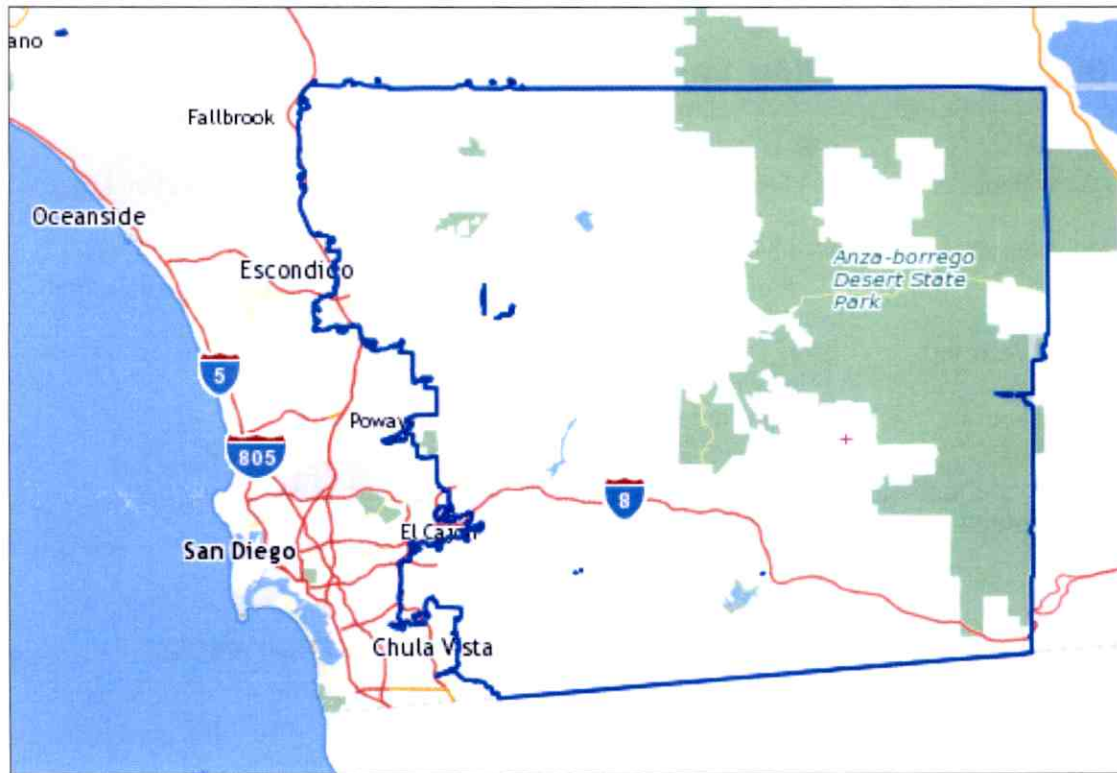
Speaker 2 supported no breakup of unite escondido

District 66: Escondido, Ramona, Julian and East County San Diego

Escondido, a central hub for North County San Diego. It anchors SH-78 and is central to the I-15. It is a center for shopping with the North Country Fair Mall and historic downtown. The Escondido Center for the Arts provides a cultural base for the whole of north and east county. With a new \$85 million hospital being built there will be the medical center for all rural SD County.

Since the mission days Escondido has formed the central administrative and population hub for the rural county areas. All east county shares the agricultural past with north county and the growing of avocados. Unfortunately this has almost died out due to the water shut off in the central valley.

The area suffers from being constantly partitioned or added to districts outside the county. This results in the county never getting the type of representation needed for the solution to the growing structural problems of theregion.



The New District 66

Bounded by the county lines on three sides and by the Interstate-15 on the west, the area forms a complete whole with a common history, growth and problem set.

Redistricting Data

In two or three sentences, explain how you want your audience to interpret this data. You can remove any individual chart if need be.

Population (i)	
Does your district meet the "equal population" requirement?	
Total Population	462,126
Ideal	465,675
Variance	-0.76%
Original District	566,937

Universe: Total Population
 Datasource: Statewide Database at the University of California Berkeley
 Data Year: 2010
 Data Level: Census Block

Citizen Voting Age Population (i)		
Determine if your district falls under the protection of the federal Voting Rights Act		
	My District 66	Original District
Citizen Voting Age Population	278,462	309,988

Universe: Total Population
 Datasource: Statewide Database at the University of California Berkeley
 Data Year: 2010
 Data Level: Census Block

Ethnicity / Race (i)		
	My District 66	Original District
Hispanic or Latino	32.26% 149,081	42.30% 239,808
White alone	56.02% 258,904	44.57% 252,673
Black or African American alone	3.34% 15,437	3.65% 20,670
Asian	4.34% 20,064	5.99% 33,980
Some Other Race	1.40% 6,485	1.05% 5,928
Two or More Races	2.63% 12,155	2.45% 13,878

Universe: Total Population
 Datasource: Statewide Database at the University of California Berkeley
 Data Year: 2010
 Data Level: Census Block

Ethnicity	Percent	Population
Hispanic or Latino	32.26%	149,081
White alone	56.02%	258,904
Black or African American alone	3.34%	15,437
Asian	4.34%	20,064
Some Other Race	1.40%	6,485
Two or More Races	2.63%	12,155