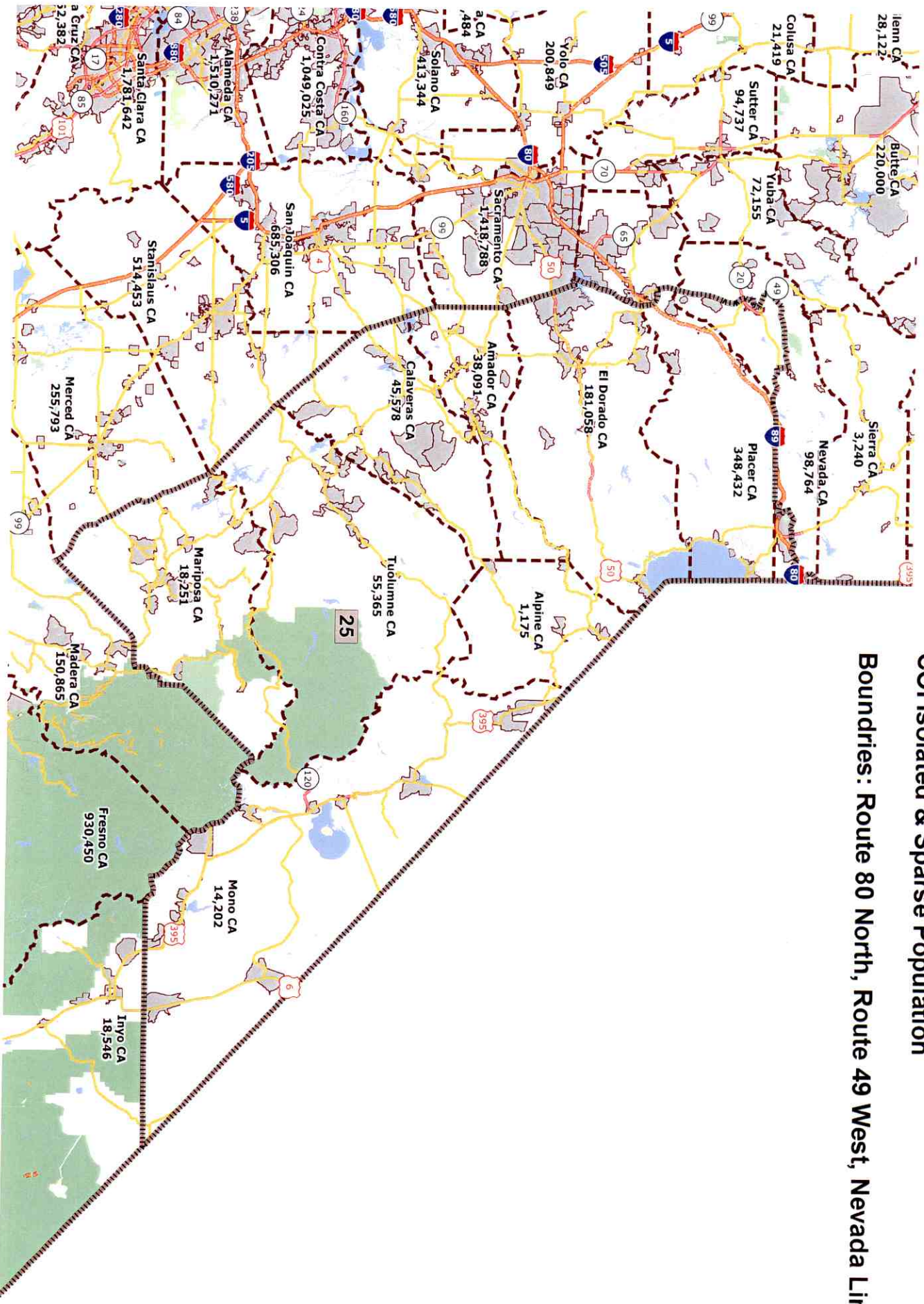
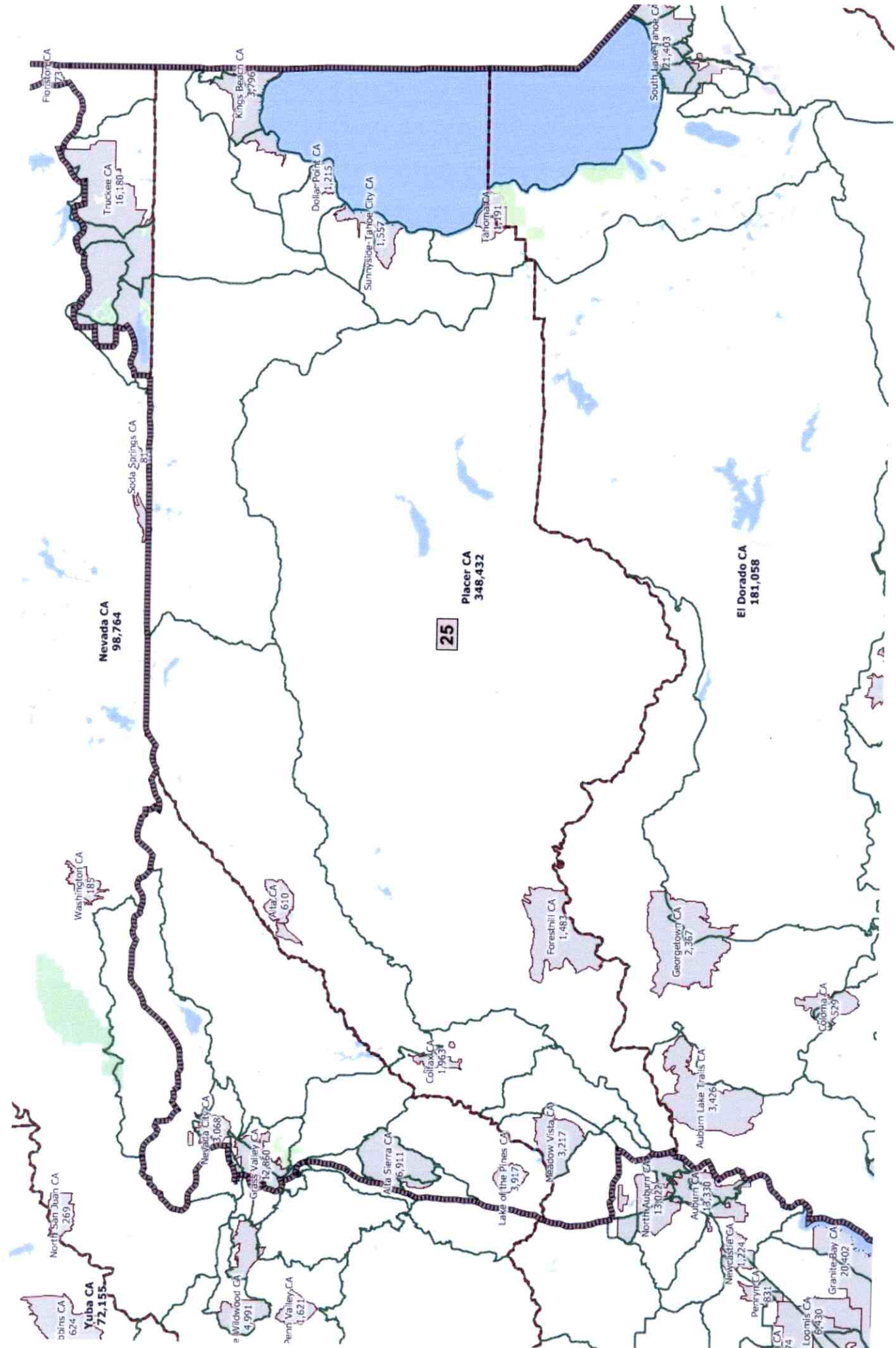


Trans-Sierra Assembly District: COI Isolated & Sparse Population

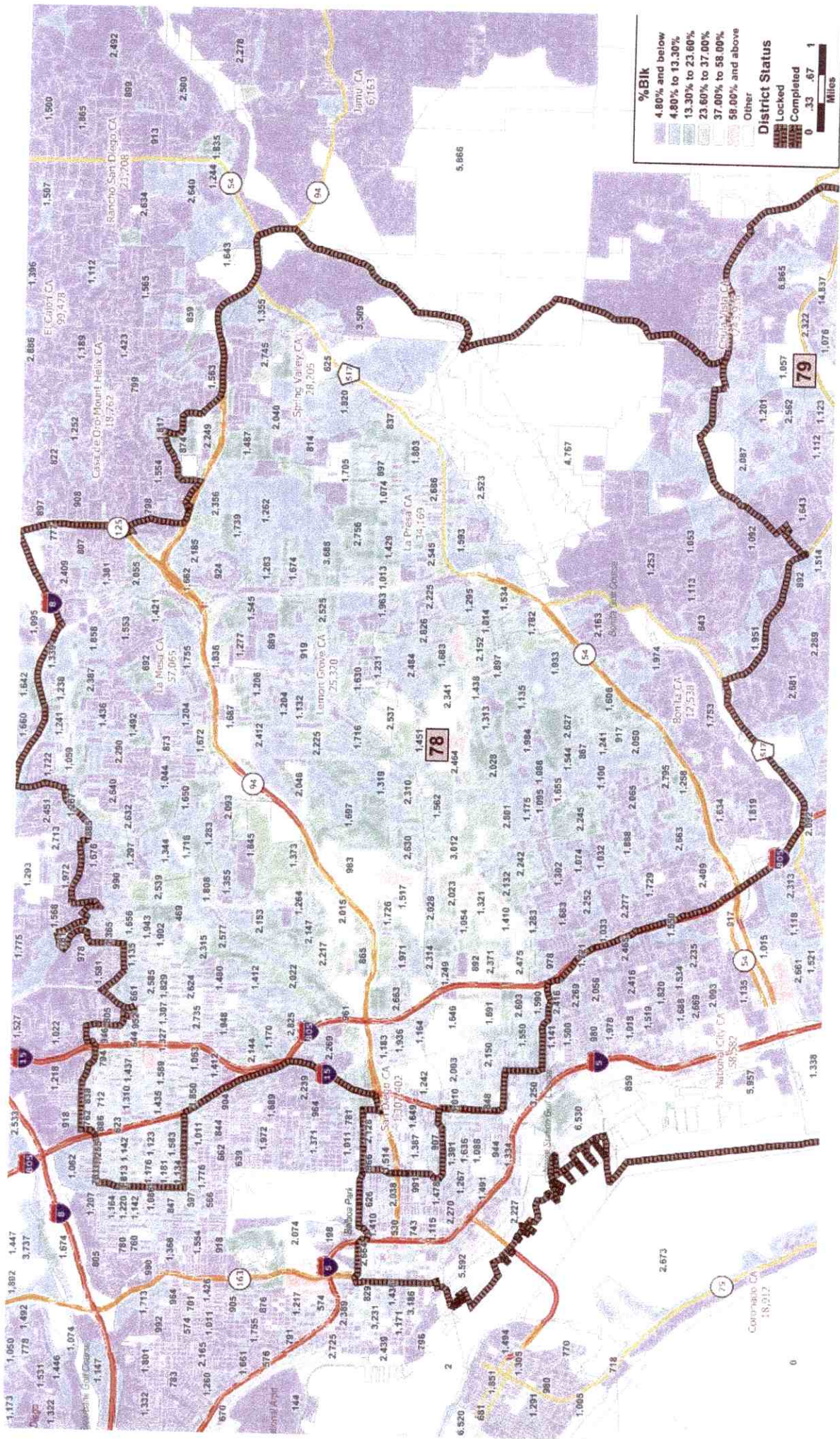
Boundries: Route 80 North, Route 49 West, Nevada Line East



Population	Deviation	%	Hispanic	%	White	%	Black	%	Ambindian	%	Asian	%	Hawaiian	%	Other	%	2+ Races	%
485666	-8	0.0%	54476	11.7%	409515	87.9%	4509	1.0%	6609	1.4%	9635	2.1%	674	0.1%	18132	3.9%	16592	3.6%



Please take a look at the maps for the 78-79 District. As you will see we were able to reconfigure the District Lines to increase the 78th from 11% to 14.0% (65231) (this was achieved by redrawing the lines of the 78th to include the densely population of African Americans in the 79th). You will also see an increase of 38% to 44.5% for Latinos/Hispanics in the 78th. The 79th District started with an African American population of 6.5%, after subtracting from the 79th population to increase the 78th District percentages of AA population, and the balancing in the overall populations numbers in the 78th and 79th to ensure compliance that each district has equal population based on the U. S. Constitution; the African American population decreased to 5.3% (24435) in the 79th; which is equal to the overall state's projection percentage for African Americans. The African American population is/was scarcely spread across the 79th. The Latino population increased from 45% to 62.6% in the 79th. (Please see excel file).



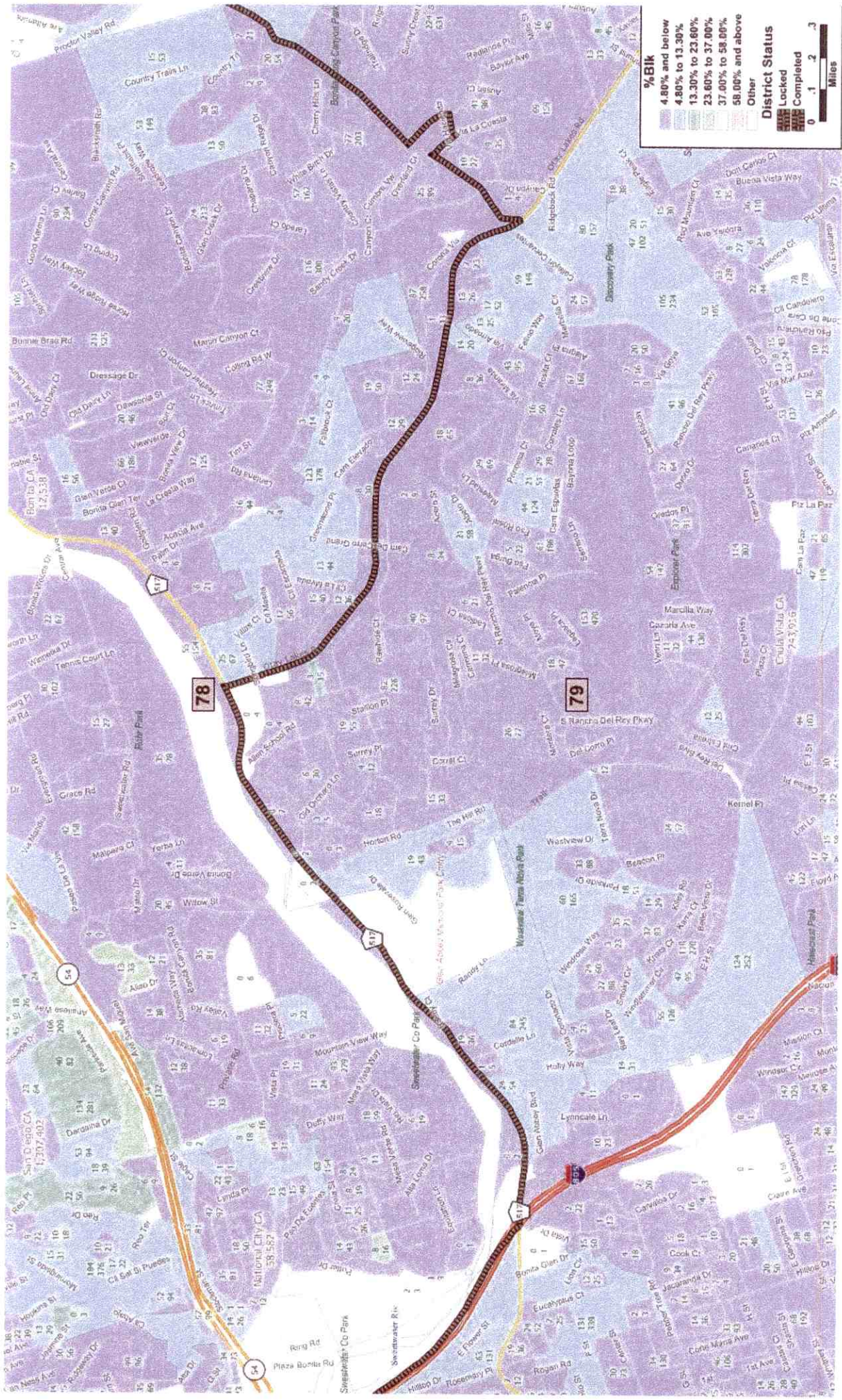
%BIK

- 4.00% and below
- 4.00% to 13.30%
- 13.30% to 23.60%
- 23.60% to 37.00%
- 37.00% to 58.00%
- 58.00% and above

District Status

- Locked
- Completed
- Other

0 .33 .67 1
Miles



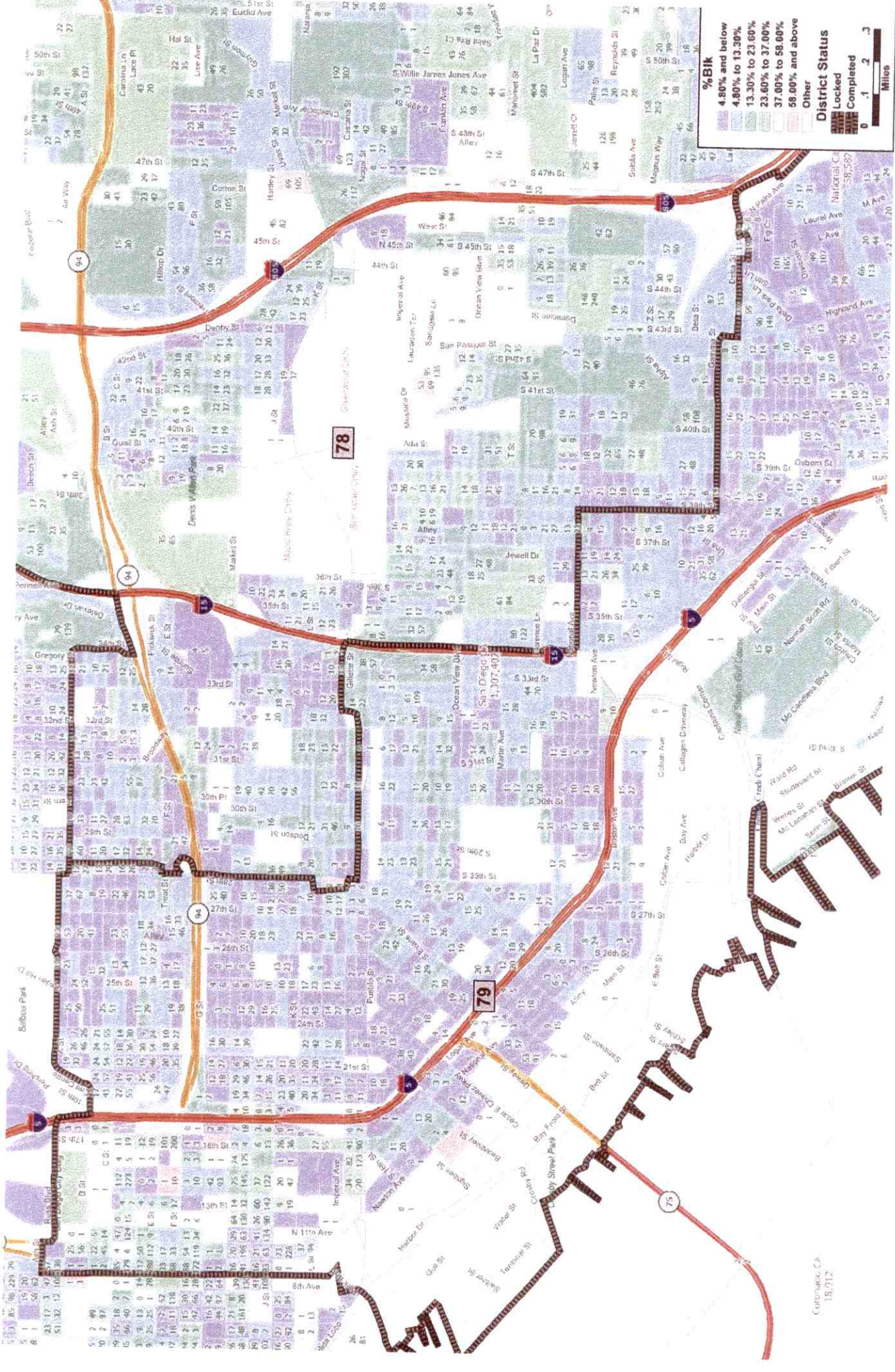
%Blk

- 4.80% and below
- 4.80% to 13.30%
- 13.30% to 23.60%
- 23.60% to 37.00%
- 37.00% to 58.00%
- 58.00% and above
- Other

District Status

- Locked
- Completed

0 1 2 3
Miles



%BIK

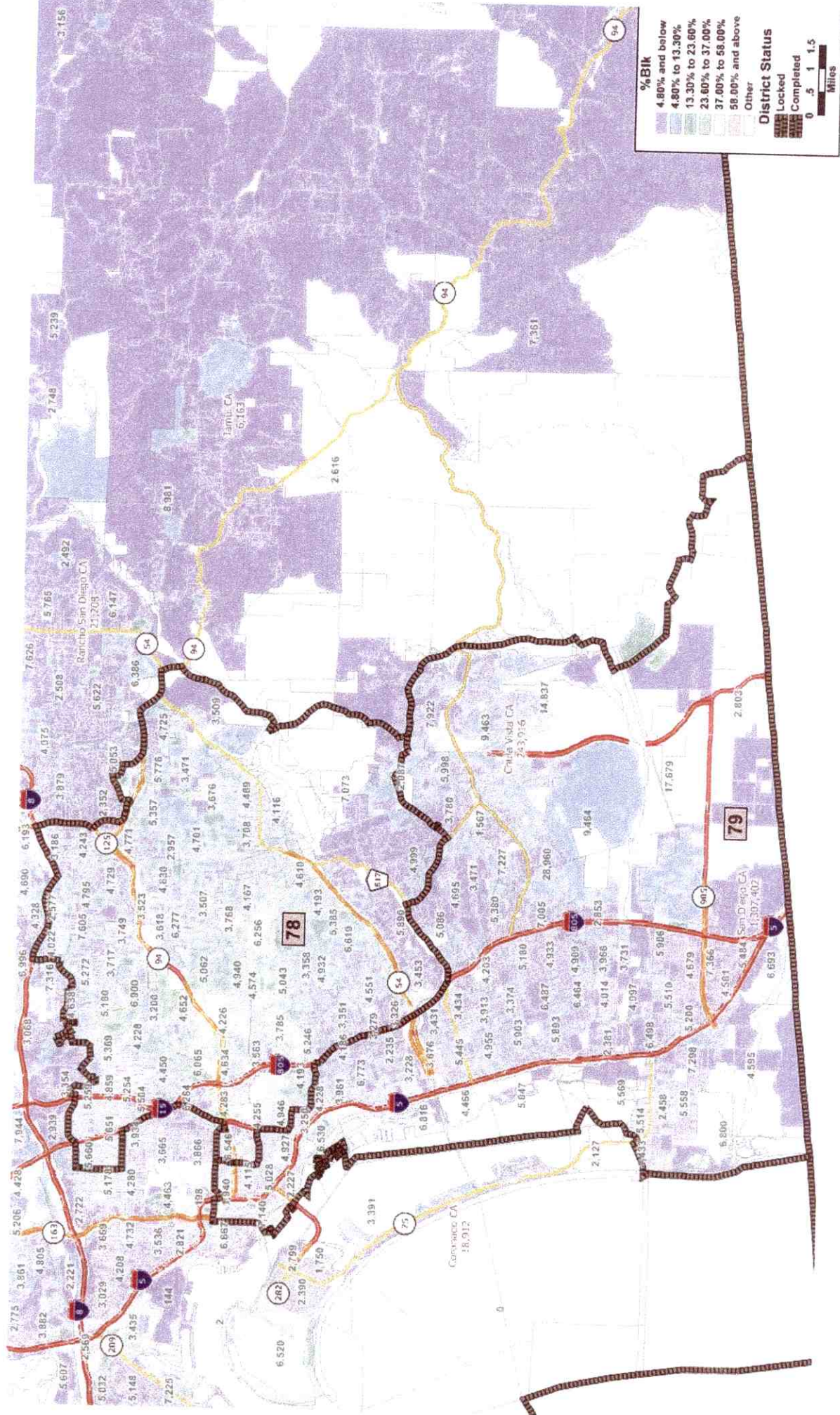
- 4.80% and below
- 4.80% to 13.30%
- 13.30% to 23.60%
- 23.60% to 37.00%
- 37.00% to 58.00%
- 58.00% and above

District Status

- Locked
- Completed

0 .1 .2 .3
Miles

Corporation, CP
18, 21, 2



Pastors on Point
United African Ministerial Action Council
Latino Redistricting Committee

#4

05.14.11D -

Good afternoon Commissioners; I am Rev. Gerald W. Brown, Pastors on Point and The United African American Ministerial Action Council in collaborations' with the Latinos Redistricting Committee are Faith Base-Community Based Organizations; which represent approximately 40 thousand constituents in the San Diego 78th and 79th Districts. We have banded together to work collectively in addressing the need for a Public Servant/s, representatives from amongst the people, for the people. That will work with integrity, honesty and be accountable to all, to include those who maybe living in a fragmented, underserved and disenfranchised community. After all, isn't that what the Constitution and Voter's Right Act is all about?

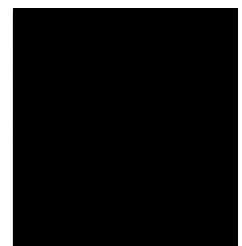
Today we would like to present a map that we have collectively worked on for both districts to ensure representation for all. We have respected your request to be compact and contiguous.

The communities of the 78th and 79th California Assembly Districts; stands together as two of the most diverse districts in the state of California. Its demographics are made up of African American, Ethiopians, Latinos, Semolina, Asia Pacific Islanders, Vietnamese, Laotian, and Caucasian.

Our Community of Interest is for the most part, similar to that which you heard across the state. I applaud each you for your due diligent in presenting an opportunity for everyone to be heard.

1. Public Safety and Judicial Reform- San Diego County is the 3rd largest area for returning ex-offenders in the state, with no clear resources they return to our community. While crime is down in our city, according to our Mayor and the Sandag's reports, still our communities are overwhelmed without additional resources to serve them. A gang problem that seems to be out of control, we need Jobs for our youth.
2. Education Reform-Low performing schools with thousands of students (Black and Brown Boys) either dropping out or being pushed out by the ninth grade.
3. Health Care, Latinos and African American are leading the pack, (top of the list) for every major health disparity in the nation. If you don't believe me, there go another one, the disease of underrepresented. Still we have little are no health care, Thank God for Family Health Center and San Yisdo Health Centers.
4. Economic Development---We suffer high unemployment rates from Skilled and un-Skilled works. The rate of unemployment and under employment is tripled in our communities.
5. We are seeking to Build a Beloved Community base and focus to ensure that all communities are represented and working collectively we will meet to address the challenges, interests and ensure that we are not a part of the problem but the solutions

Rev. Gerald Brown	United African Ministerial Action Council
Rev. Ray Smith	Pastors on Point
Robert Robinson	United African Ministerial Action Council
Estella Del Rio	Latino Redistricting Committee
Angel Harris	Pastors on Point-Harris Group



#16

05.14.11E -

Hi my name is Aden Muhumed and I represent Somali Family Service Organization and the Somali community in San Diego.

After the twin cities of Minnesota San Diego is the largest resettlement capital in the country and the Somalis here are estimated between 20.000 to 25.000 and nearly half of that population are living in the heart of San Diego City (City Heights), the other half are mainly dispersed in Lemon Grove, Balboa, Linda Vista, Paradise Valley hills, spring Valley and the other parts of the county. Our community are totally resettled in the urban area.

Somalis in San Diego are suffering big problems specially transportation, education, job opportunities, housing and medical access and more than 95% are living under the poverty line. Another big challenge is from the influx of the new asylum seekers who are daily crossing the southern border of the State, and those are the most needy know. That challenge must be addressed urgently by the governmental agencies and non-governmental.

Our community don't have good knowledge about the redistricting and over all what is going in this country, so they need more education on how to advocate their interests and overcome the challenges they are facing

Our people while they are under-served they like to live same area so they can help each other in the means of transportation, access to hospitals and clinics and that is way they are always crowded in the city heights area and we hope that the redistricting commission will give priority and let them to live in their same area as one district.

TESTIMONY OF PALMA HOOPER
At Public Hearing Held By
COMMISSIONERS OF CITIZENS REDISTRICTING COMMISSION
For The State of California
DATE: MAY 14, 2011 LOCATION: SAN DIEGO

#17

05.14.11F -

My name is Palma Cesar Hooper. I have been living in San Diego County for over 30 years.

I am the President of the SOUTHWEST CENTER FOR ASIAN PACIFIC AMERICAN LAW (also known as SCAPAL). SCAPAL is a nonprofit, nonpartisan organization, providing pro bono educational programs on various topics of the law including redistricting to underserved communities in San Diego County.

In San Diego County there are over 431,800 Asian American Pacific Islanders (AAPIs), representing about 14% of the County's population.

The attached map shows areas of AAPI population density in San Diego County. There are three main geographical areas for AAPIs.

In South Bay, there is a concentration of AAPIs in National City, Chula Vista, Paradise Hills, Bonita and Bay Terrace.

In the City of San Diego to the north, there is a second concentration of AAPIs located in Mira Mesa, Kearny Mesa, Rancho Penasquitos, Sorrento Valley, Carmel Valley, Poway and Rancho Bernardo.

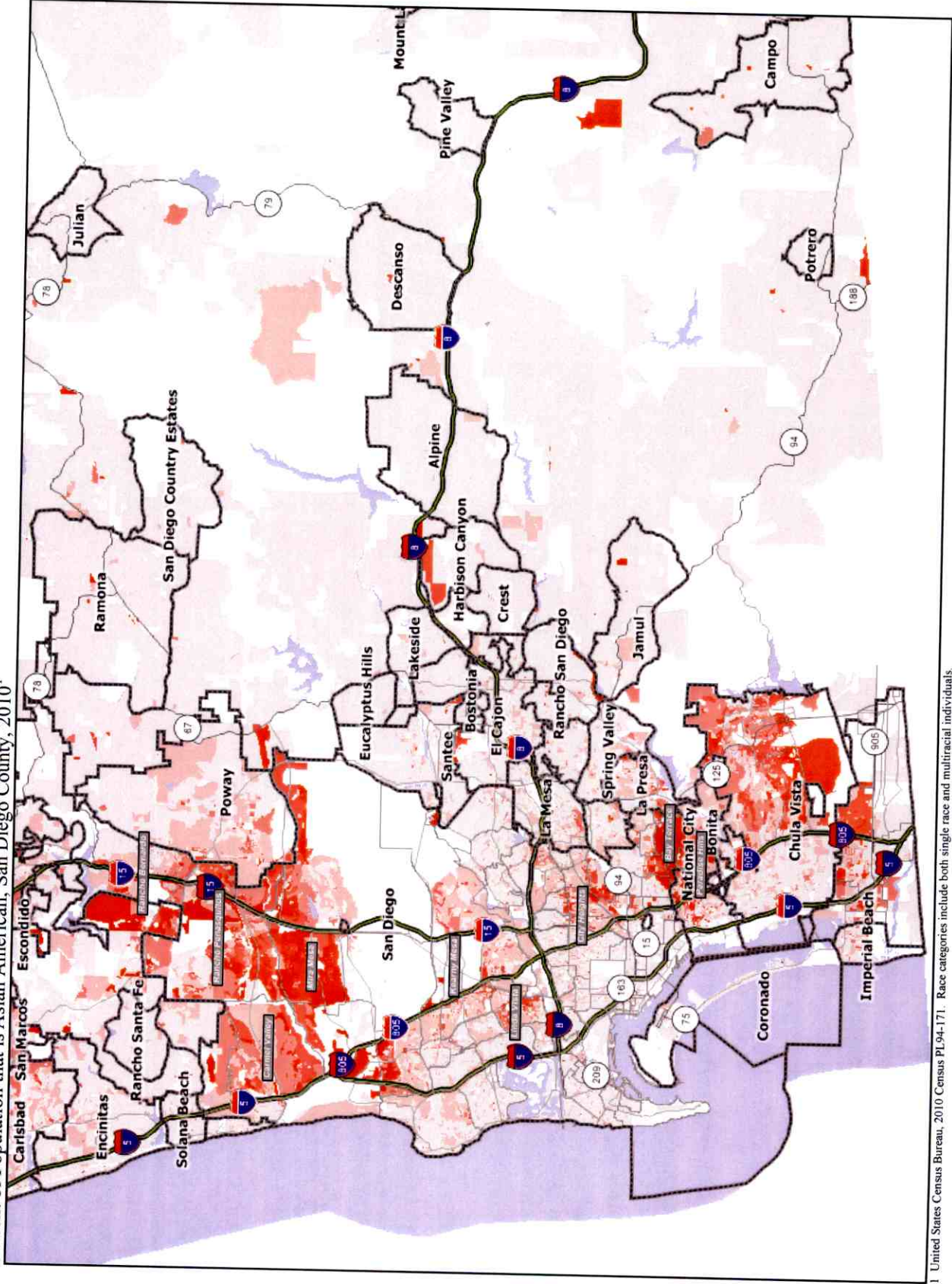
In Mid-City of San Diego, there is a third concentration of AAPIs, primarily Southeast Asians, in Linda Vista and in City Heights.

These communities in which AAPIs live have shared needs for language access, similar immigrant backgrounds, common social and cultural interests, and similar economic needs. AAPIs have common policy concerns around these needs and interests that would be best-served if the areas in which they live are kept intact within districts.

Thank you for your dedicated service to insure democracy for all.

*Map Submitted in Support of the Testimony of Palma Hooper
Public Input Hearing: May 14, 2011 in San Diego, CA*

Percent of Population that is Asian American, San Diego County, 2010¹



¹ United States Census Bureau, 2010 Census PL94-171. Race categories include both single race and multiracial individuals.

TESTIMONY OF DR. OFELIA DIRIGE
At Public Hearing Held By
COMMISSIONERS OF CITIZENS REDISTRICTING COMMISSION
For The State of California
DATE: MAY 14, 2011 LOCATION: SAN DIEGO

#18

05.14.11G -

I am Dr. Ofelia Dirige, faculty member in the Center for Asian Studies and Graduate School of Public Health, San Diego State University. I am also President and CEO of Kalusugan's Filipino American Wellness Center, a nonprofit organization based in east National City. The Center aims to improve the health of FilAms and underserved groups primarily in east National City, Paradise Hills and Bay Terrace as well as throughout the County. I work in National City, live in east Chula Vista, and have been a long time community activist.

We respect the interests of Latinos in San Diego, including the drawing of a Latino Voting Rights Act (VRA) district that takes in parts of National City, Chula Vista and Paradise Hills. Doing this would require splitting the three areas.

We ask the Commission to draw a second district to the east that keeps together the API population in these three areas including Bonita and Bay Terrace and their community institutions.

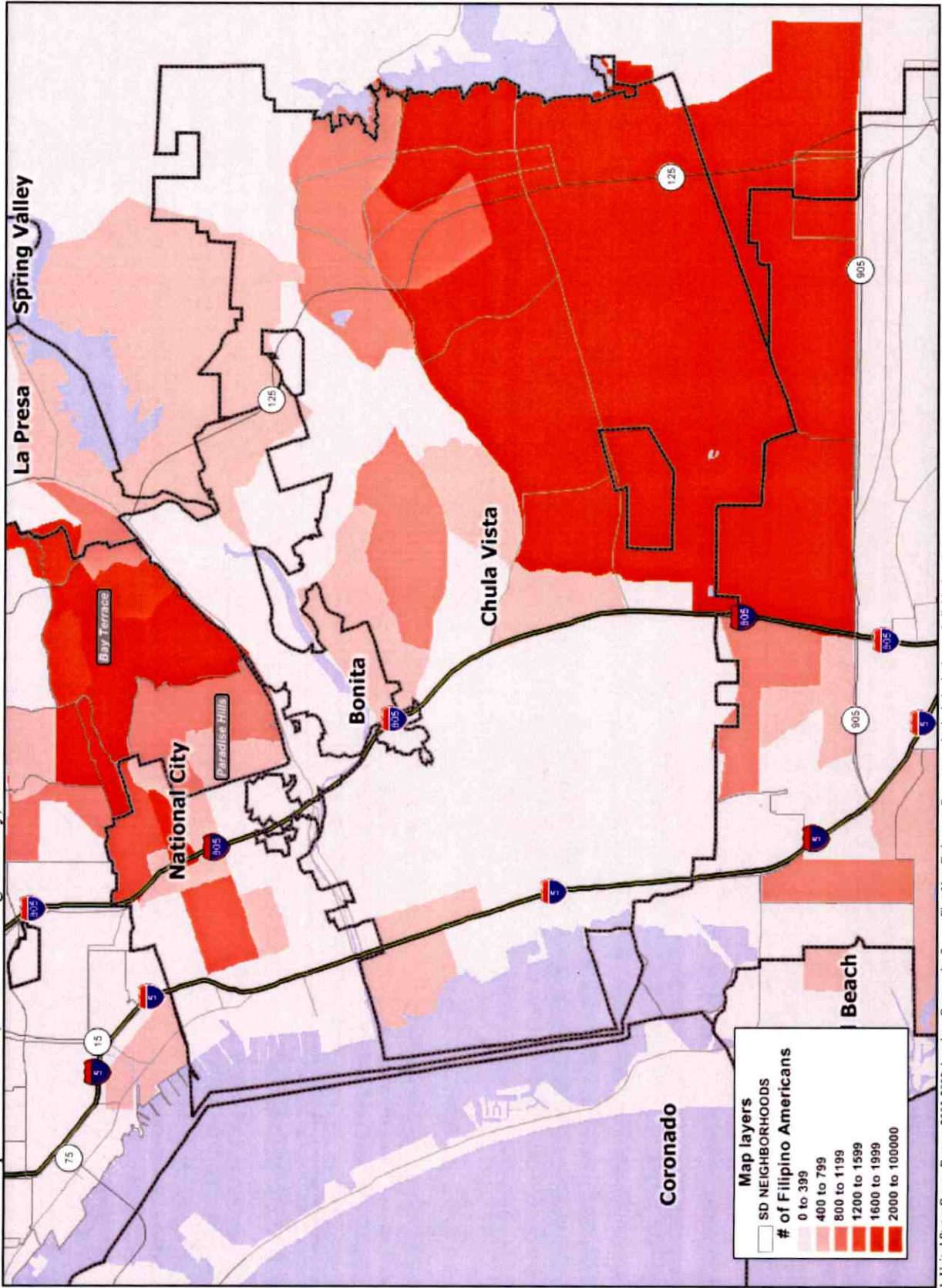
The reason is that many FilAms are part of this community of interest. The attached map shows Filipino population density in these areas (National City, Chula Vista, Paradise Hills, Bonita and Bay Terrace).

National City is the center of FilAm economic, cultural, and political events. The areas being considered rely on more than 20 FilAm institutions in National City to maintain family & business ties and access to social and health services. The attached map shows these community institutions. Examples are: Seafood City supermarket, Filipino Press and Asian Journal newspapers, and Manila Sunset and Villa Manila restaurants. Every year, the Wellness Center sponsors a Cultural & Arts Festival in Paradise Hills that draws over 15,000 mostly young people.

Thank you for considering our request.

*Map Submitted in Support of the Testimony of Dr. Ofelia Dirige
Public Input Hearing: May 14, 2011 in San Diego, CA*

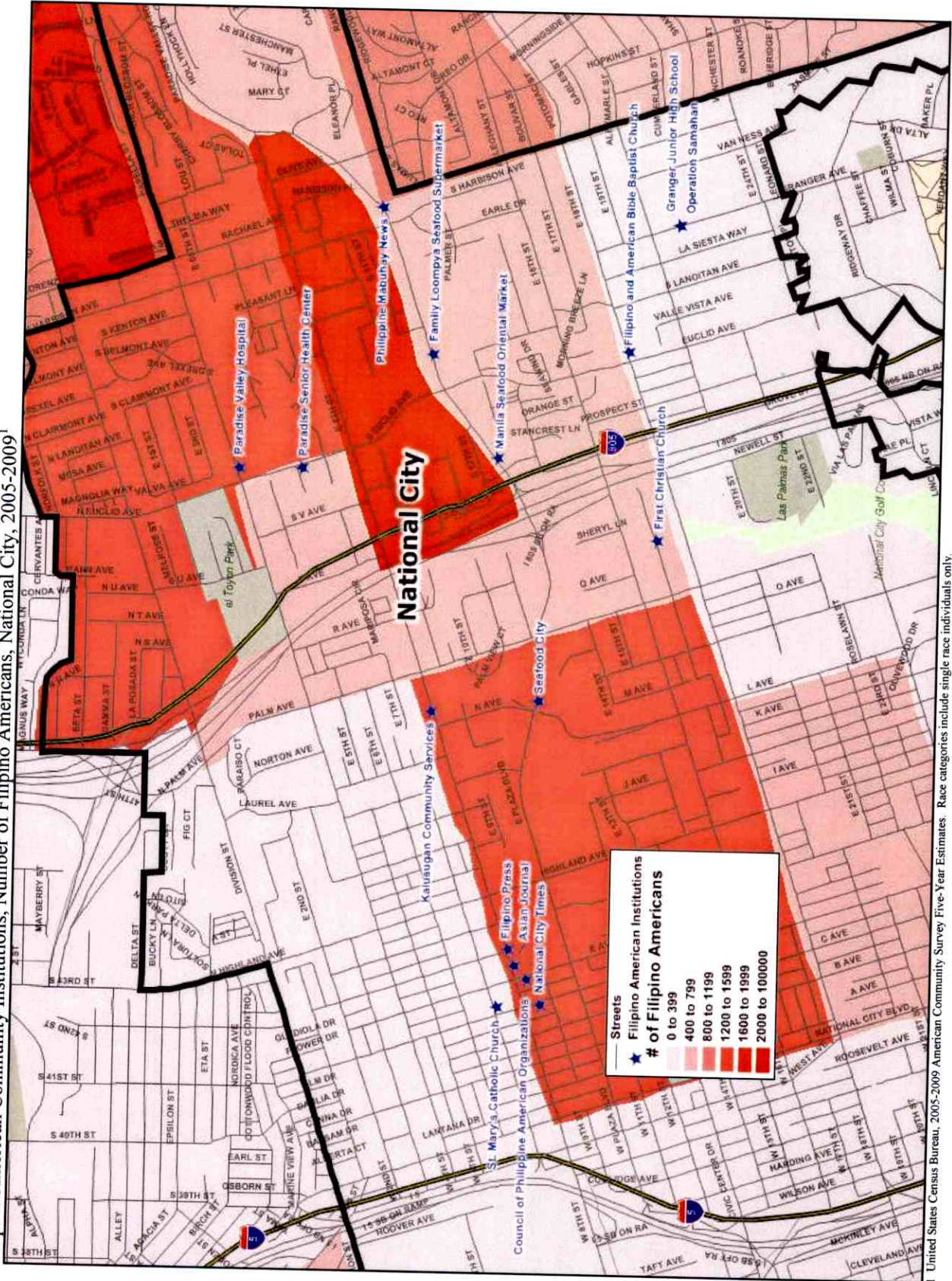
Number of Filipino Americans, South San Diego County, 2005-2009¹



¹ United States Census Bureau, 2005-2009 American Community Survey Five-Year Estimates. Race categories include single race individuals only.

Map Submitted in Support of the Testimony of Dr. Ofelia Dirige
Public Input Hearing: May 14, 2011 in San Diego, CA

Filipino American Community Institutions, Number of Filipino Americans, National City, 2005-2009¹



¹ United States Census Bureau, 2005-2009 American Community Survey Five-Year Estimates. Race categories include single race individuals only.