

- 05.14.11N

TESTIMONY OF IVAN PENETRANTE
At Public Hearing Held By
COMMISSIONERS OF CITIZENS REDISTRICTING COMMISSION
For The State of California
DATE: MAY 14, 2011 LOCATION: SAN DIEGO

#28

My name is Ivan Penetrante. I currently reside with my family in Chula Vista and have been there for over 13 years. I am an educator in the Sweetwater Union High School District which includes schools in National City, Chula Vista, Imperial Beach and San Diego. I am a community organizer with Anakbayan, San Diego (a youth organization that addresses social issues in the Filipino community).

There is a community of interest primarily comprised of Filipino Americans and other Asian Pacific Islanders (APIs) located in the South County including Paradise Hills, East National City, Bonita, Bay Terrace, Alta Vista, and Chula Vista. A large amount of API families from this community have strong ties to military service. I, as a second generation Filipino American, consider myself a "navy brat" as do many of my peers from this community of interest.

Prior to moving to Chula Vista, my family had resided in Paradise Hills. The migration away from the Paradise Hills/National City neighborhoods to nearby developing areas has been a common trend among Filipino American families. However, we are still drawn to this "hub" of our community because strong familial and social ties remain. Our roots are firmly planted there.

We also frequent the areas of Paradise Hills and National City which have a number of Fil-Am businesses and institutions that serve our community. APIs from the areas of Chula Vista, Bonita, Bay Terrace and Alta Vista have a strong economic impact on the local economy there. This is evident by the number of markets, restaurants, newspapers, etc. in National City whose target market is our API community.

We ask the Commission to draw a district that keeps Filipinos and other API residents of South County with the community institutions we rely upon in National City. We ask the Commission to keep our community together and not divide it. By keeping our communities intact, we will have a stronger voice and will no longer be underrepresented.

Thank you for your consideration.

To: California Citizens Redistricting Committee
Date: May 14, 2011
Re: Citizen Comment on "Orange County Community of Interest"

#29
- 05.14.11 O

I respectfully submit this input:

The Redistricting Commission has been charged with drawing geographical districts which maintain geographic integrity of localities, neighborhoods, and communities of interest. There are many factors which bind the residents of our primarily suburban family-oriented Orange County into a community of interest, among which are the following:

- Geographically Orange County is compact and contiguous from coastal to inland.
- Property tax which is paid to the County of Orange for certain services and amenities provided to its constituent cities.
- The cities of Orange County share government: the ^{Orange County} County, the Transportation Authority, which collects Measure M funds as a ¼% sales tax on goods sold in Orange County to be used for the improvement of roads and transportation throughout the County; and the Orange County Department of Education (OCDE) comprised of five districts in Orange County which partners with Orange County School Districts to provide over 500,000 students with a world class education and which serves as a connecting agency among Orange County school districts, community college districts, and community organizations.
- The cities of Orange County share local media.

With this in mind, it makes no sense why

- **At the State Assembly level the Orange County city(s) of**
 1. San Clemente should be combined with San Diego County as part of San Diego's District 73;
 2. Rancho Santa Margarita and North Tustin and parts of Orange should be combined to become Riverside County District 71;
 3. Villa Park, Anaheim Hills, and Yorba Linda should be combined with Riverside, San Bernardino *and* LA Counties as part of District 60;
 4. Buena Park and La Palma should be combined with LA County into LA's District 56; and
 5. Why beach cities should be combined with foothill communities, each of which have their own special communities of interest.
- **At the State Senate level the Orange County city(s) of**
 1. San Clemente is combined with San Diego County into San Diego's District 38; while
 2. Placentia, Yorba Linda, Brea and La Habra are combined with LA *and* San Bernardino Counties into District 29.
- **At the Congressional level the Orange County city(s) of**
 1. San Clemente, a beach city, and San Juan Capistrano should be combined with Riverside County 44;
 2. Mission Viejo, Rancho Santa Margarita which is contiguous to San Juan Capistrano, Yorba Linda Brea and Placentia should be combined with San Bernardino *and* LA Counties into District 42; while district 46 must meander through LA County to include Huntington Beach.
 3. Why beach cities should be combined with foothill communities, each of which have their own special communities of interest, *environmentally, economically & geographically.*

A fair and reasonable redistricting would maintain the compactly and geographically contiguous county lines of the County of Orange to honor the community of interest of the cities of Orange and its population. A fair plan would create the requisite number of Congressional, State Assembly and Senate districts entirely within the confines of Orange County. Based on the 2010 U.S. Census, Orange County has a right to 4.3 dedicated Congressional delegates but is presently represented by only 3; and is entitled to 6.5 dedicated California Assembly seats, but is presently represented by only 5. We will submit a draft redistricting map in the near future to address these concerns.

Respectfully,
Anita Meister-Boyd
Newport Coast, CA 92657

Describe 31

- 05.14.11P

15W
52 N
MTRP EAST

~~TS South~~ Mission George / FV LARS RD S.
"Island in the Hills"

May 14, 2011

2011 State Redistricting Commission

Presentation by the Tierrasanta Community and Town Council

Points and reasoning why Tierrasanta(TS) should be put back together and the splitting up of our neighborhood that was done in 2001 should be undone.

Assembly District

Situation after 2001

- Tierrasanta was sliced into 3 Assembly districts(76,77,78)
- 70% of the population is currently in 77th
- 3% of the population is in the 78th
- Representation for a community that has about 32,000 persons, done by 3 Assembly districts is not just unfair it is ridiculous
- Residents don't know who to go to for issues. Every time someone calls us, we have to scramble to look at a map.
- Neighbors in the same city planning district, who live on the same street are represented by a different State Assembly members

Desired outcome in 2011

- Tierrasanta should be put back together into 1 Assembly district
- Since 70% of Tierrasanta is already in the 77th, it makes sense to move the entire community into the 77th.
- This would make the community geographically compact, all areas have reasonable access, contiguous, and have total communities of interest.
- After reviewing this issue for months, we found no valid reason why the community was split up and no valid reason to have it remain that way.

Senate District

Situation after 2001

- Tierrasanta was sliced into 2 Senate Districts(36 and 39)
- 90% of the population is currently in 36th
- 10% of the population is currently in 39th
- Representation for a community that has about 32,000 persons, done by 2 Senate Districts is not just unfair it is ridiculous
- Residents don't know who to go to for issues. Every time someone calls us, we have to scramble to look at a map
- Neighbors in the same city planning district, who live on the same street are represented by a different State Assembly members

Desired outcome in 2011

- Tierrasanta should be put back together into 1 Senats district
- Since 90% of Tierrasanta is already in the 36th, it makes sense to move the entire community into the 36th
- This would make the community geographically compact, all areas have reasonable access, contiguous, and have total communities of interest.
- After reviewing this issue for months, we found no valid reason why the community was split up and no valid reason to have it remain that way

Congressional district 52nd

- The entire community is in the 52nd and we see no reason to move or change.

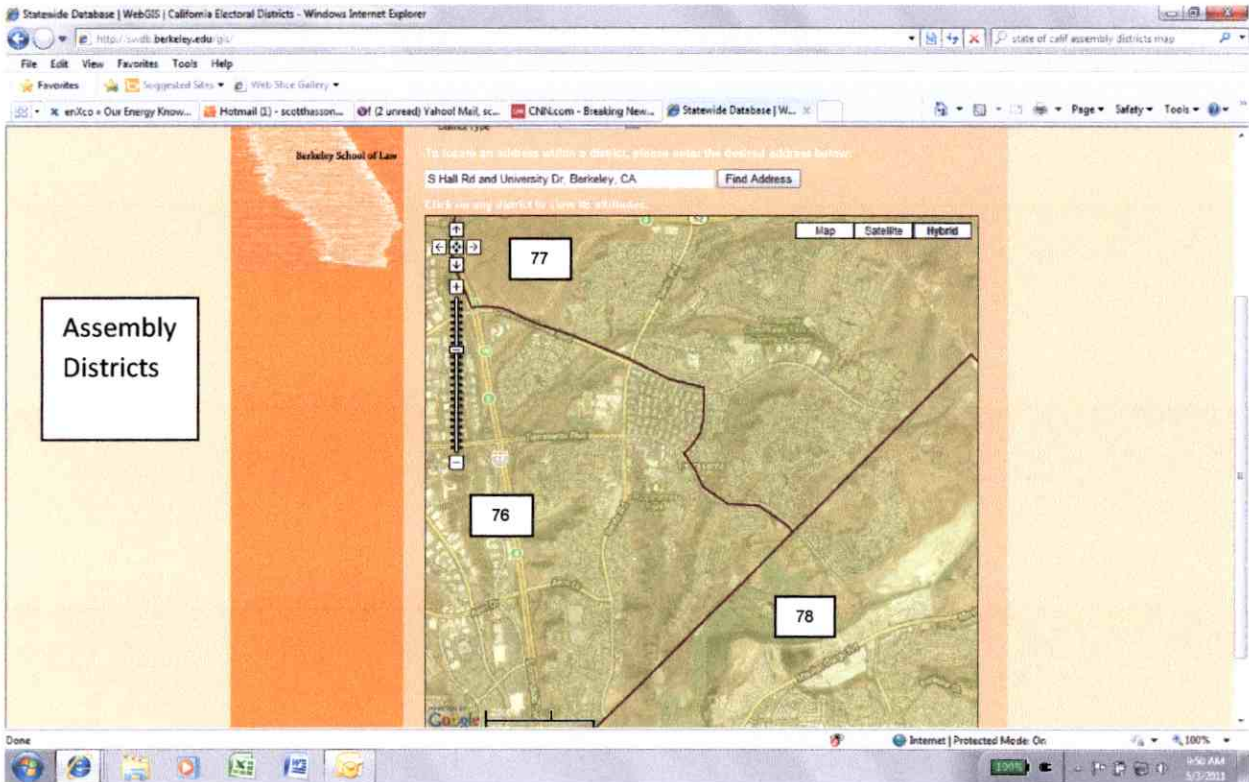
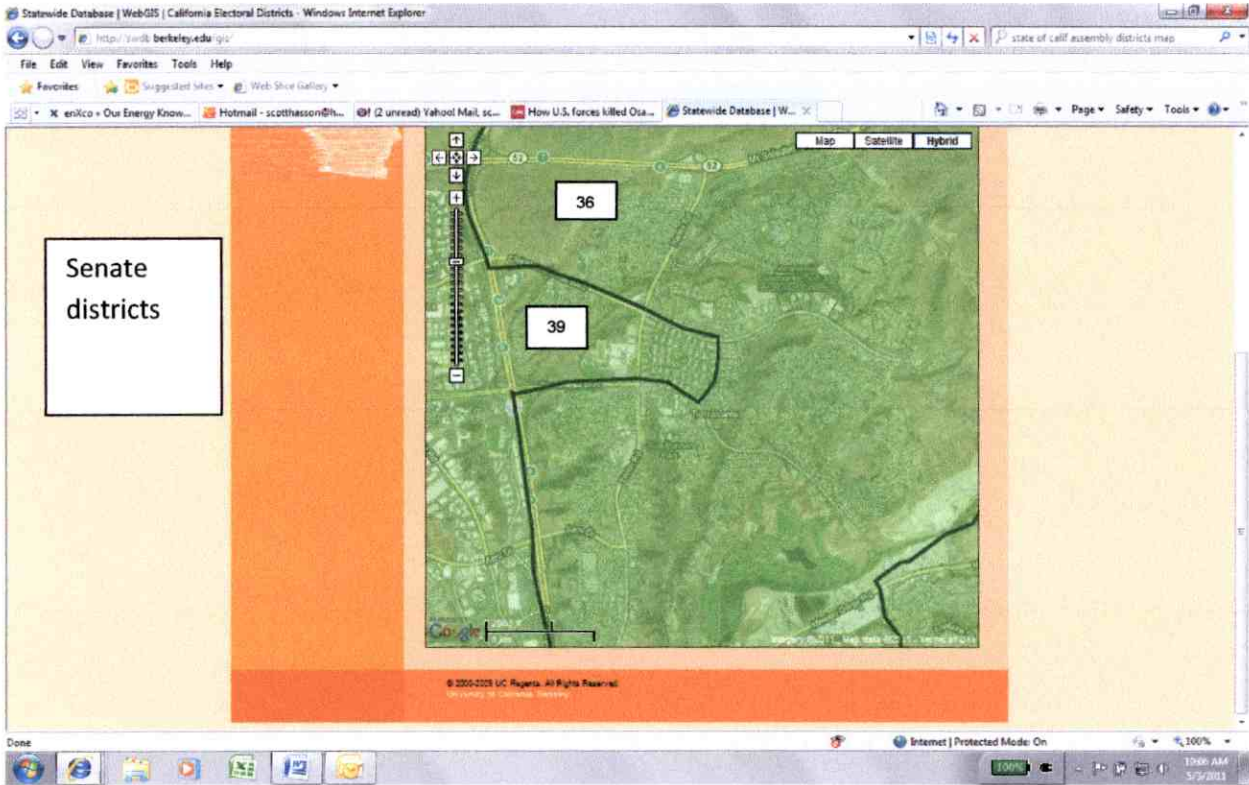
Equalization District 3

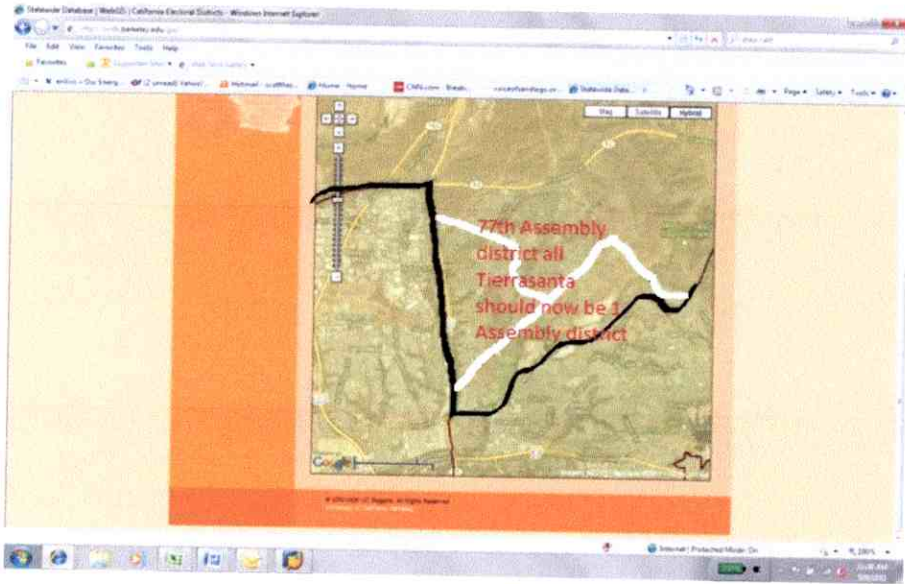
- We have issue with the equalization district lines.

ND

Submitted by:

Scott Hasson, President Tierrasanta Community and Town Council





Statewide Database | WebGIS | California Electoral Districts - Windows Internet Explorer

http://tools.berkeley.edu/gis

File Edit View Favorites Tools Help

enlco - Our Energ... Unread! Yahoo!... Hotmail (2) - scott... Home - Home CNN.com - Breaki... voiceofsaniego.or... Statewide Data... Page Safety Tools

Berkeley School of Law

S Hall Rd and University Dr, Berkeley, CA Find Address

CLICK out map controls to view the map controls

Map Satellite Hybrid

Black lines end the sliced area of our community and make us whole

All of Tierrasanta should now be in the 35th Senate District

Done Internet | Protected Mode: On 100% 11:09 AM 5/9/2011

TESTIMONY OF JOE LONG
At Public Hearing Held By
COMMISSIONERS OF CITIZENS REDISTRICTING COMMISSION
For The State of California
DATE: MAY 14, 2011 LOCATION: SAN DIEGO

45

- 05.14.11 Q

My name is Joe Long. I am a resident of San Diego and community activist in the Vietnamese American community.

The areas in San Diego referred to as City Heights East and Oak Park have a significant Vietnamese population. This area is east of the Freeway 15 along El Cajon Boulevard to the north and areas to the northeast of Freeway 805 where 805 intersects Freeway 94. I have attached a map of this area which shows where Asians live.

In City Heights East some community leaders are attempting to have the area along El Cajon Boulevard between Highland Avenue and Euclid Avenue designated as Little Saigon.

The residents in these areas have access to numerous Vietnamese owned businesses. They primarily speak Vietnamese as their first language and many understand very little English. They shop at Vietnamese grocery and retail stores, patronize health, dental, and other professional businesses, and attend churches and temples in the area where Vietnamese is spoken.

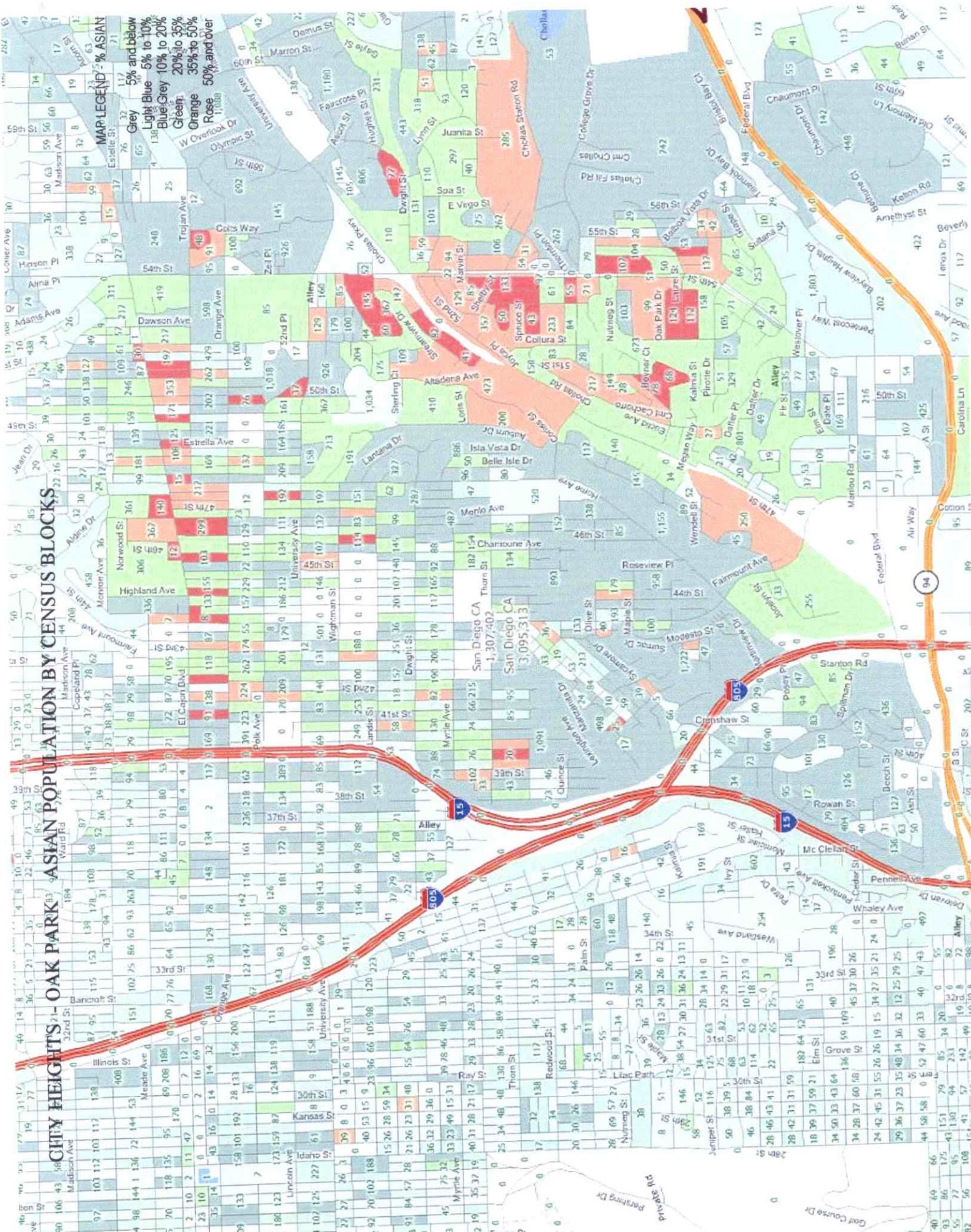
I respect the interests that Latinos in City Heights have in being drawn into a Voting Rights Act district.

At the same time, I ask the Commission to draw a second district to the east that includes as much of the Vietnamese American residents in City Heights East and Oak Park as well as other surrounding communities to the east such as El Cerrito and Redwood Village formerly known as Darnall. This would include, but not limited to, east of Freeway 15 and north of Freeway 94 where it intersects Freeway 805, parts of El Cajon Boulevard, University Avenue, Orange Avenue. The interests of the Vietnamese American community would be served best by keeping as much of their residents together and by joining them with other Asian Pacific Islanders in the adjoining district which is now Assembly District 78.

CITY HEIGHTS - OAK PARK ASIAN POPULATION BY CENSUS BLOCKS

MAP LEGEND - % ASIAN

- Grey 5% and below
- Light Blue 5% to 10%
- Blue/Grey 10% to 20%
- Green 20% to 35%
- Orange 35% to 50%
- Rose 50% and over



- 05.14.11R

TESTIMONY OF MARITA FERRER
At Public Hearing Held By
COMMISSIONERS OF CITIZENS REDISTRICTING COMMISSION
For The State of California
DATE: MAY 14, 2011 LOCATION: SAN DIEGO

#46
46
46

My name is Marita Ferrer. I am a long time resident of San Diego County and live in east Chula Vista. I am a registered nurse and have been a long time community activist with a special focus on health care. I am the President of the Council of Philippine American Organizations (COPAO), a nonprofit organization, whose offices have been located in National City for over 40 years. COPAO has over 50 Fil-Am member organizations from all over San Diego County.

National City is the hub for social, cultural, health and economic interests and needs of Filipino Americans as well as the larger Asian Pacific Islander (API) communities of Paradise Hills, Bay Terrace, Bonita and Chula Vista. APIs come to National City to work, socialize, worship, shop and access health and social services.

There are more than 20 FilAm institutions located in east National City. There are three supermarkets, four newspapers and over a hundred small businesses owned or operated by FilAms. There are plans for a Filipino Village on East Plaza Boulevard in National City.

Paradise Valley Hospital in east National City (South Euclid Avenue and East 8th Street) employs a large number of Filipino health practitioners. The hospital also serves Filipino food and access to the Filipino Channel to accommodate the large number of Filipino patients. Operation Samahan, a Fil Am nonprofit health center in National City, provides medical, dental, mental health counselling, and senior citizens services to all low income residents in the area.

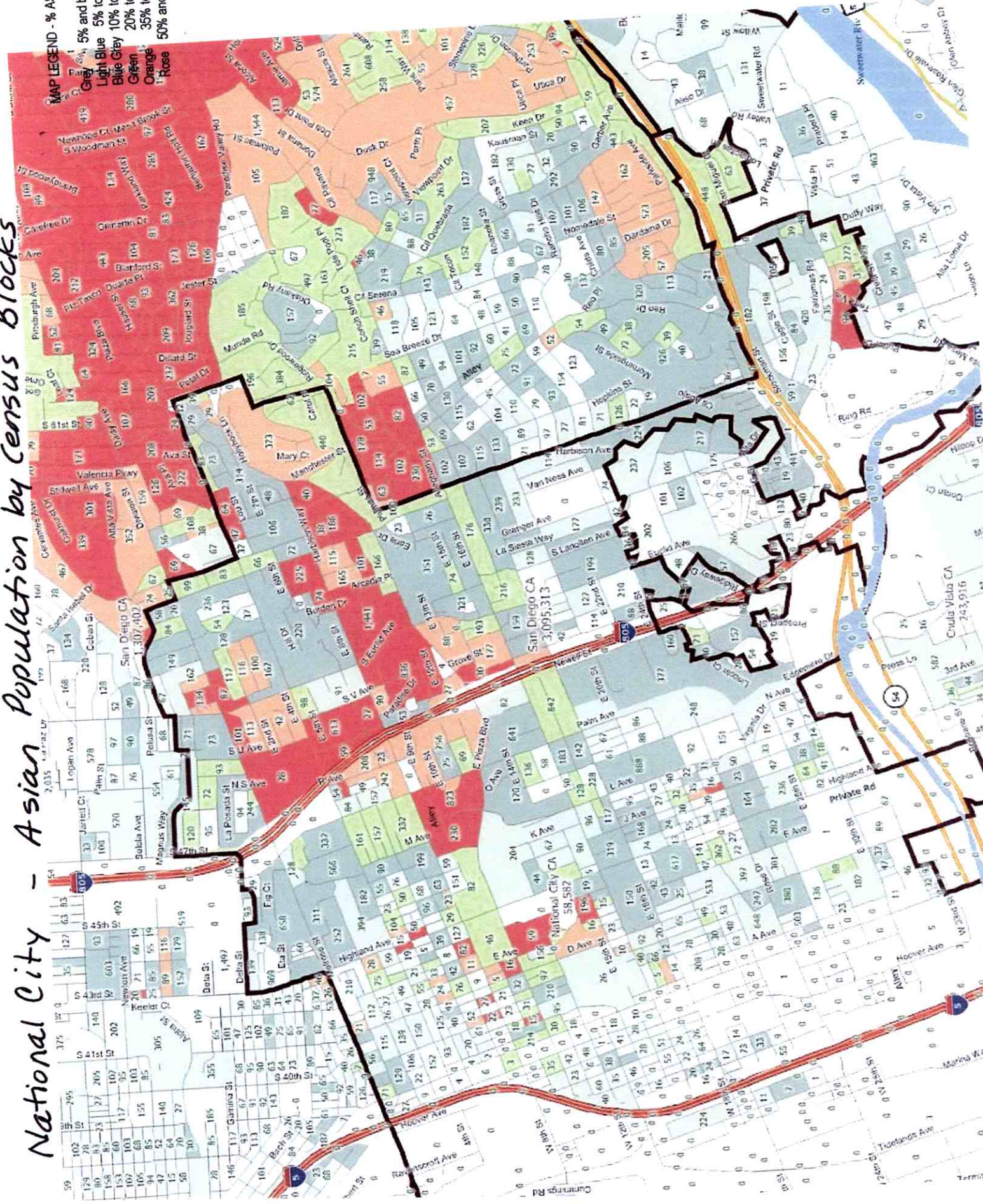
COPAO provides many activities in National City for APIs including an annual Philippine Faire and parade, Philippine consular services, and income tax assistance program for low income residents.

We ask the Commission to draw a district that keeps together the API population in National City with APIs from the surrounding areas of Paradise Hills, Bay Terrace, Bonita and Chula Vista in what is now Assembly District 78. Attached are six maps showing sections of National City, Paradise Hills, and Chula Vista where Asians live.

National City - Asian Population by Census Blocks

MAP LEGEND - % ASIAN

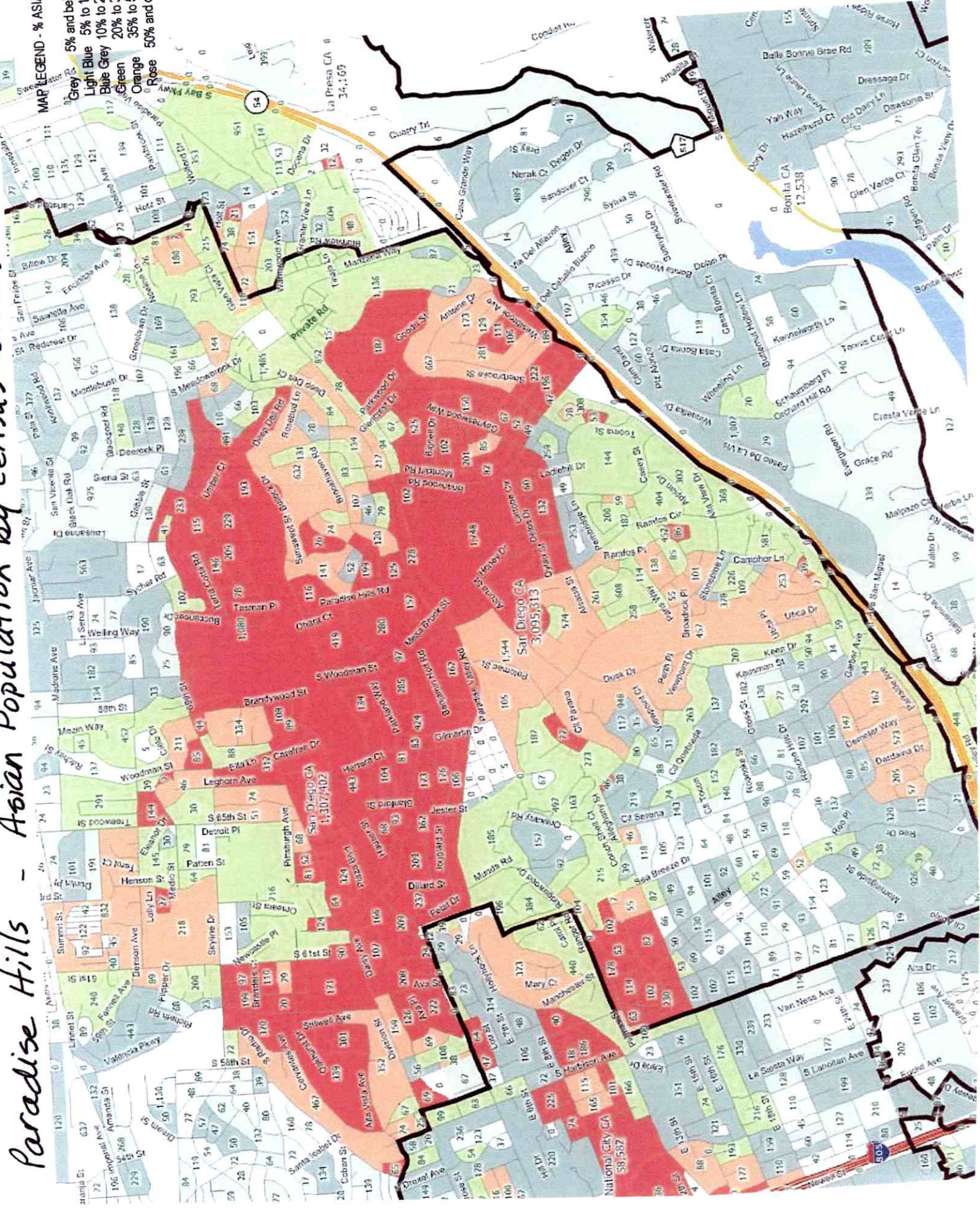
- Grey 5% and below
- Light Blue 5% to 10%
- Blue Grey 10% to 20%
- Green 20% to 35%
- Orange 35% to 50%
- Rose 50% and over



Paradise Hills - Asian Population by Census Blocks

MAP LEGEND - % ASIAN

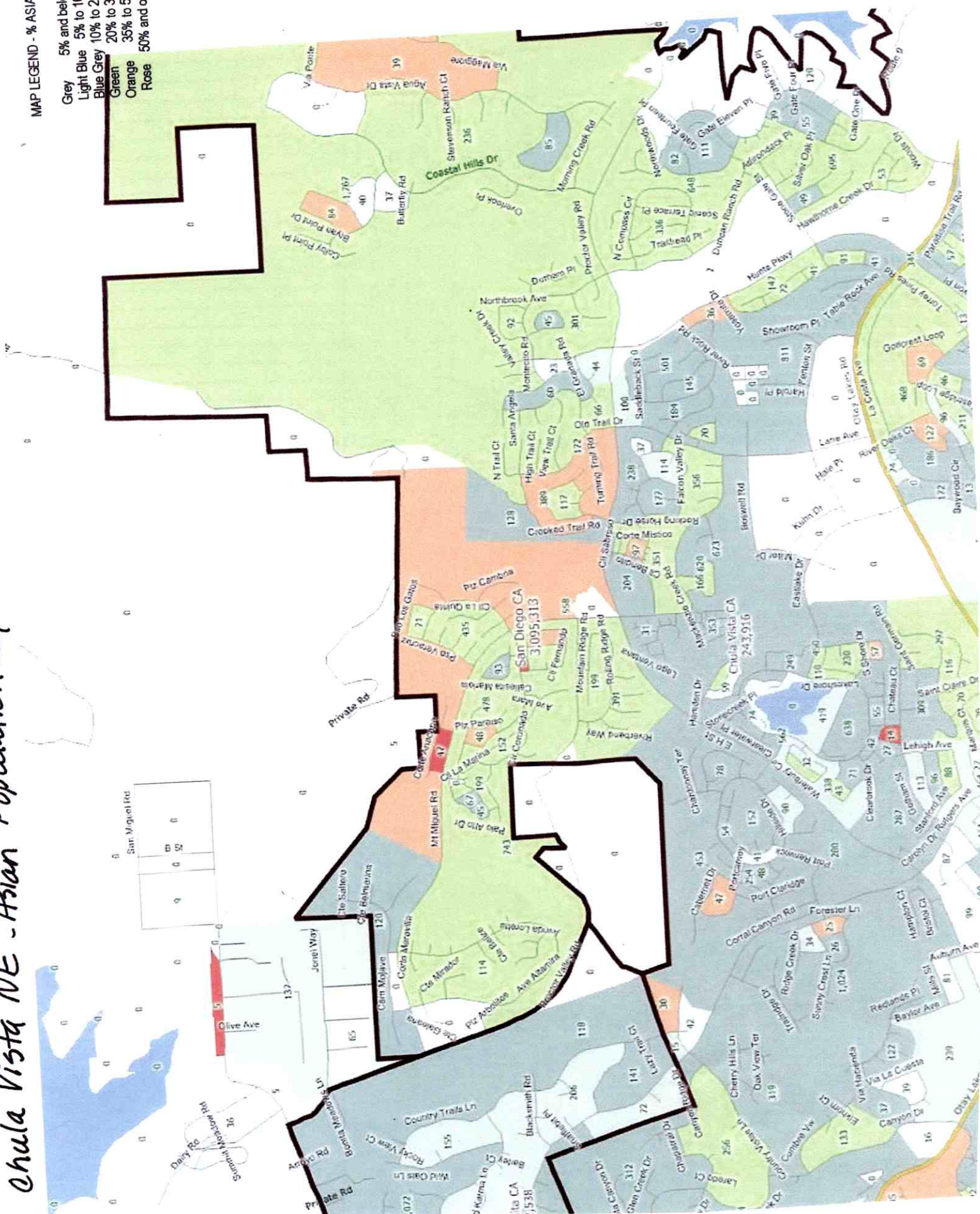
- Grey 5% and below
- Light Blue 5% to 10%
- Blue Grey 10% to 20%
- Blue 20% to 35%
- Green 35% to 50%
- Orange 50% and over



Chula Vista NE - Asian Population by Census Blocks

MAP LEGEND - % ASIAN

- Grey 5% and below
- Light Blue 5% to 10%
- Blue Grey 10% to 20%
- Green 20% to 35%
- Orange 35% to 50%
- Rose 50% and over



Chula Vista SE - Asian Population by Census Blocks

MAP LEGEND - % ASIAN

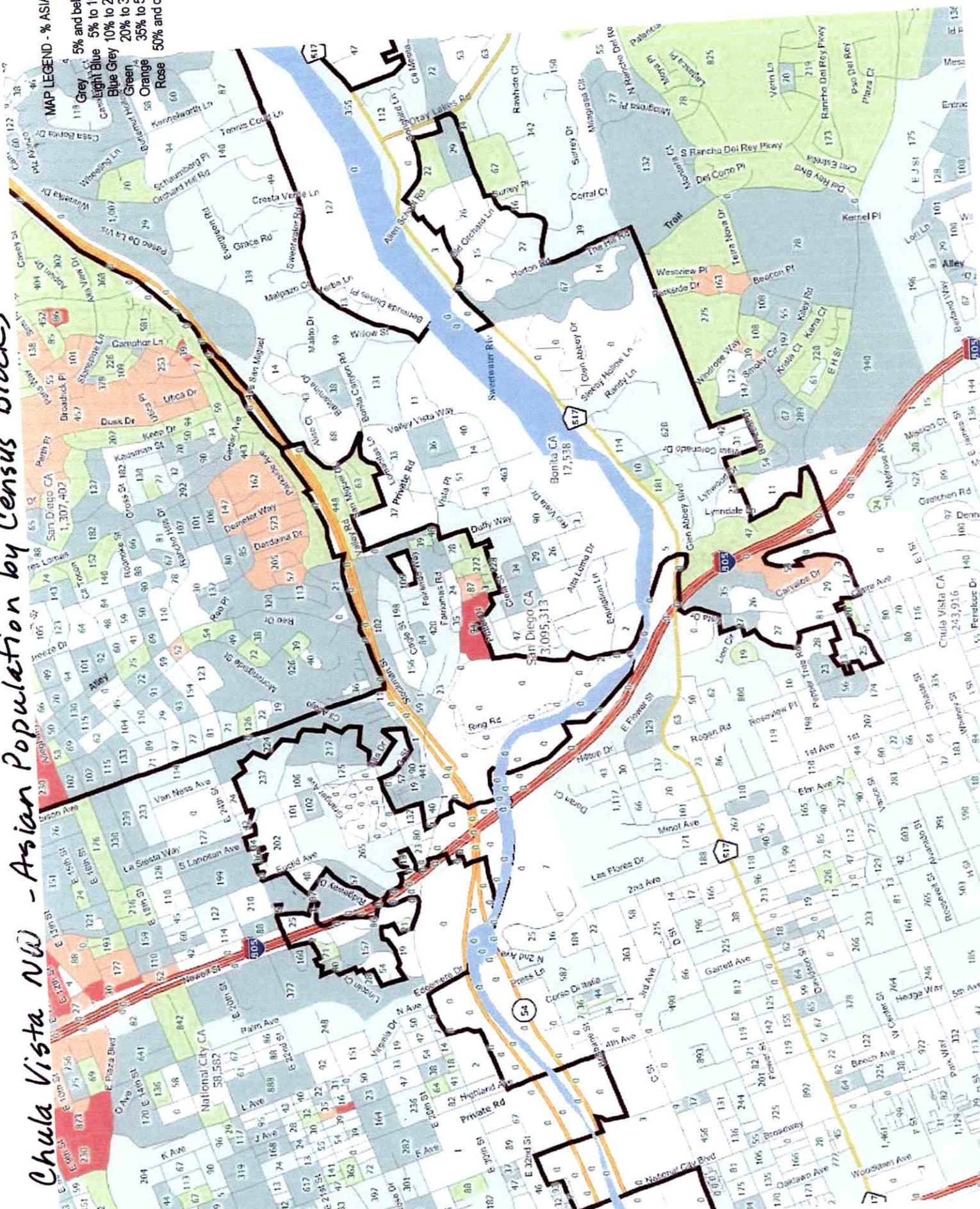
- Grey 5% and below
- Light Blue 5% to 10%
- Blue Grey 10% to 20%
- Green 20% to 35%
- Orange 35% to 50%
- Rose 50% and over



Chula Vista NW - Asian Population by Census Blocks

MAP LEGEND - % ASIAN

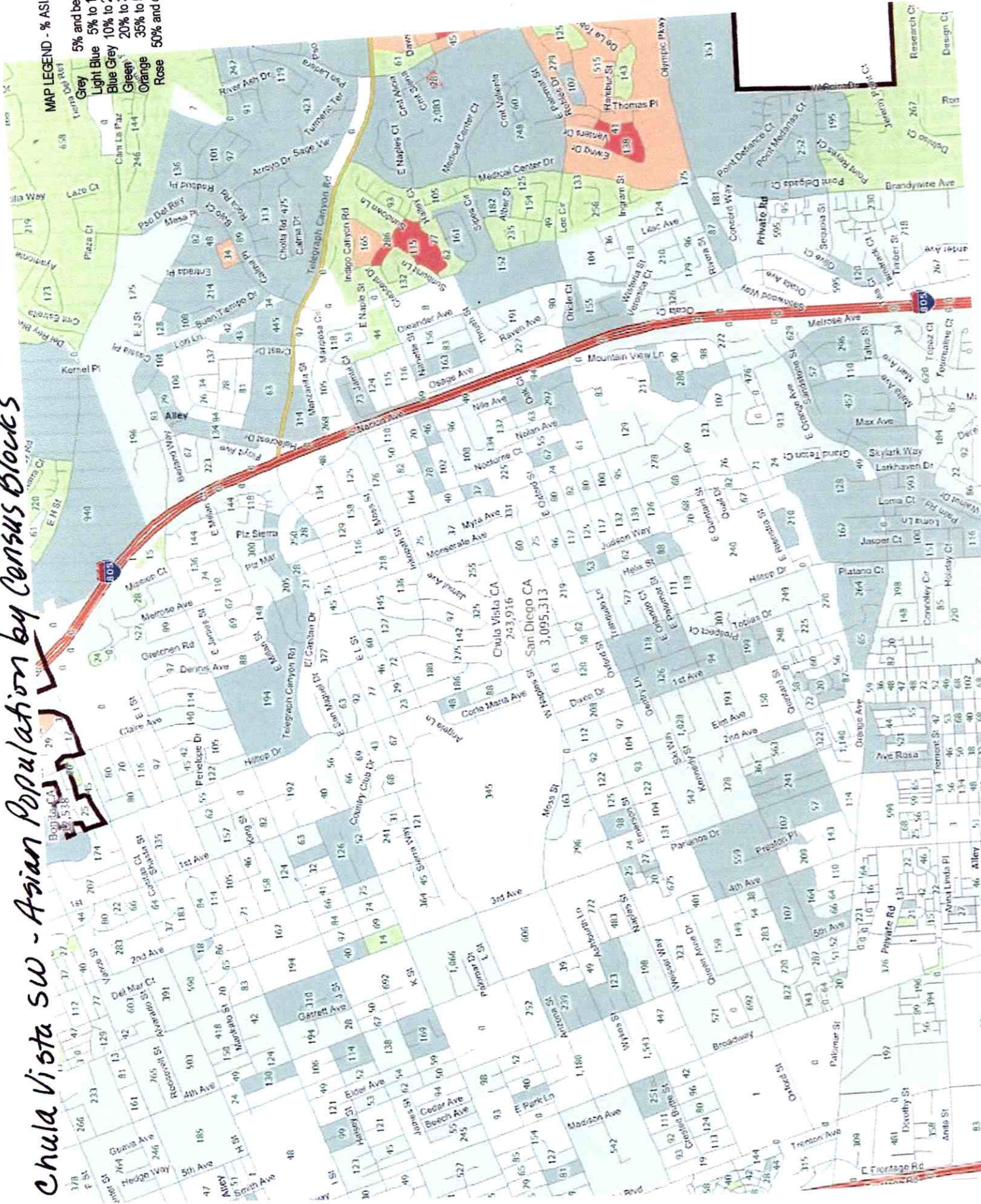
- Grey 5% and below
- Light Blue 5% to 10%
- Blue Grey 10% to 20%
- Green 20% to 35%
- Orange 35% to 50%
- Rose 50% and over



Chula Vista SW - Asian Population by Census Blocks

MAP LEGEND - % ASIAN

- Grey 5% and below
- Light Blue 5% to 10%
- Blue Grey 10% to 20%
- Green 20% to 35%
- Orange 35% to 50%
- Rose 50% and over



TESTIMONY OF VIRGIL YALONG
At Public Hearing Held By
COMMISSIONERS OF CITIZENS REDISTRICTING COMMISSION
For The State of California
DATE: MAY 14, 2011 LOCATION: SAN DIEGO

#49



- 05.14.11S

I am Virgil Yalong. I grew up in Paradise Hills. I attend church at St. Mary's Catholic Church in National City which congregation is predominantly Filipino. I am actively involved with numerous community activities involving youth in the Filipino American community in National City.

Paradise Hills, Bay Terrace, and National City have a predominantly Filipino population. Morse High School in Paradise Hills where I attended has a student population of 43% Filipino, 34% Latino, and 17% African American. One of the community of interests shared by Paradise Hills, Bay Terrace, and National City residents is public safety. Their main concern is reduction of crime and youth gang activity.

The San Diego Police Department has a Community Relations Officer assigned to the residents of Paradise Hills and Bay Terraces to meet and respond to the residents about public safety and to keep an open dialogue with youth about gang activity. There are public recreation centers in and bordering the neighborhood for young people which include Charles L. Lewis III Memorial Skate Park,^[6] Paradise Hills Recreation Center,^[7] and Penn Athletic Field.

There is constant outreach by Fil Am organizations to keep youth involved in positive activities. Both Kalusugan Community Center and COPAO in National City have cultural festivals which get young people to help in organizing and setting up the festivals as well as participating in cultural entertainment. They organize or sponsor at least three separate cultural festivals every year. One of the festivals, FilAmFest, is held in Paradise Hills and is specifically and uniquely designed to highlight Fil Am hip hop singers and other current entertainment. The FilAmFest attracts 15,000 attendees, mostly Filipino teenagers, from National City, East Chula Vista, Paradise Hills, Bay Terrace, Bonita and from Mira Mesa and north.

I request that Asians Pacific Islanders be kept together in Paradise Hills, Bay Terrace and National City together with other Asians Pacific Islanders in Chula Vista and Bonita because of common social and economic community of interests. Thank you.