

Stanislaus CA
514,453

San Jose CA
945,942

9

5,077

Santa Clara CA
1,781,642

11

1,144

1,601

10

Lexington Hills CA
2,421

12

4,014

5,167

4,933

3,423

7,997

1,666

3,314

7,006

5,932

2,899

4,996

3,887

3,791

3,936

5,687

3,009

6,504

2,800

7,436

2,725

2,683

5,871

3,629

5,237

4,521

3,906

3,988

5,684

4,669

5,684

3,306

3,988

4,085

6,892

4,784

6,129

6,774

4,172

5,563

5,810

6,555

4,475

2,632

8,042

6,683

3,203

6,087

5,374

6,774

4,784

6,129

8,854

5,363

3,173

7,618

4,585

3,461

3,173

5,889

6,740

3,321

4,615

4,699

7,079

3,743

4,586

2,600

6,854

4,916

2,484

5,263

4,915

4,658

4,582

6,650

3,461

7,618

3,173

4,039

2,222

6,064

6,388

6,260

6,813

4,499

7,253

4,058

3,772

4,585

6,916

3,461

6,069

4,448

4,448

6,650

3,461

7,618

3,173

3,219

5,784

4,828

6,959

3,941

5,733

6,260

6,813

4,499

7,253

4,058

3,772

4,585

6,916

3,461

6,069

4,448

4,448

6,650

3,173

2,562

5,172

7,684

6,595

4,617

4,617

7,079

3,743

4,586

2,600

6,854

4,916

2,484

5,263

4,915

4,658

4,582

6,650

3,461

7,618

2,817

3,066

3,265

5,940

3,911

3,880

4,809

4,809

4,074

3,295

4,741

2,182

3,665

4,173

3,365

4,040

6,219

4,480

5,480

4,530

6,023

7,701

4,424

5,867

3,027

6,339

3,027

4,074

3,295

4,741

2,182

3,665

4,173

3,365

4,040

6,219

4,480

5,480

4,530

4,171

3,839

7,572

5,867

3,027

7,062

6,936

4,980

5,440

4,530

4,530

6,219

4,480

5,480

4,530

4,530

4,530

4,530

4,530

4,530

4,798

5,273

5,242

9,741

9,882

4,418

4,431

6,562

4,415

4,415

4,415

4,415

4,415

4,415

4,415

4,415

4,415

4,415

4,415

4,415

719

5,756

5,242

9,741

4,901

2,373

323

5,116

5,450

4,415

4,415

4,415

4,415

4,415

4,415

4,415

4,415

4,415

4,415

4,415

5,389

4,074

3,700

3,672

4,733

4,555

4,901

2,373

323

5,116

5,450

4,415

4,415

4,415

4,415

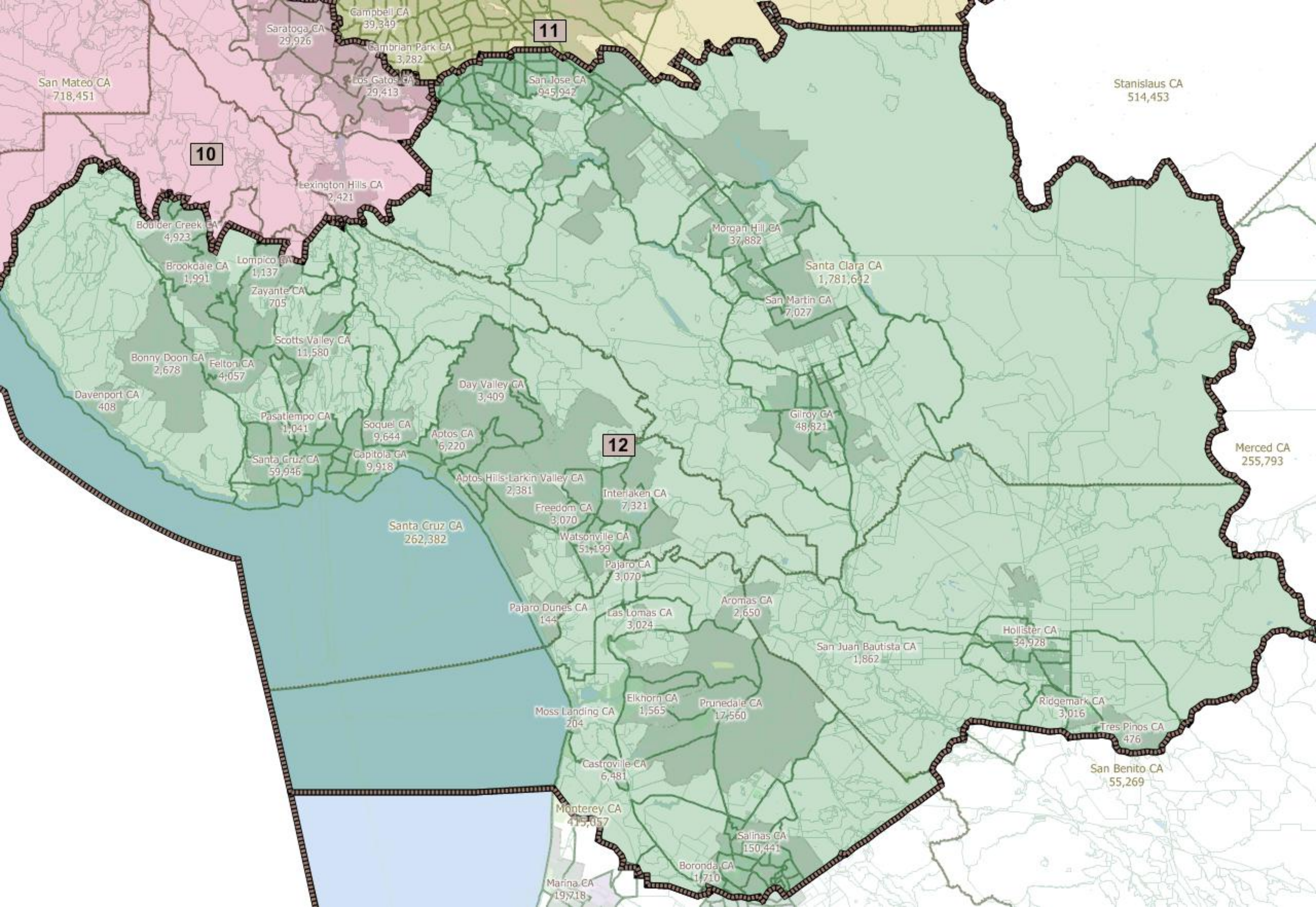
4,415

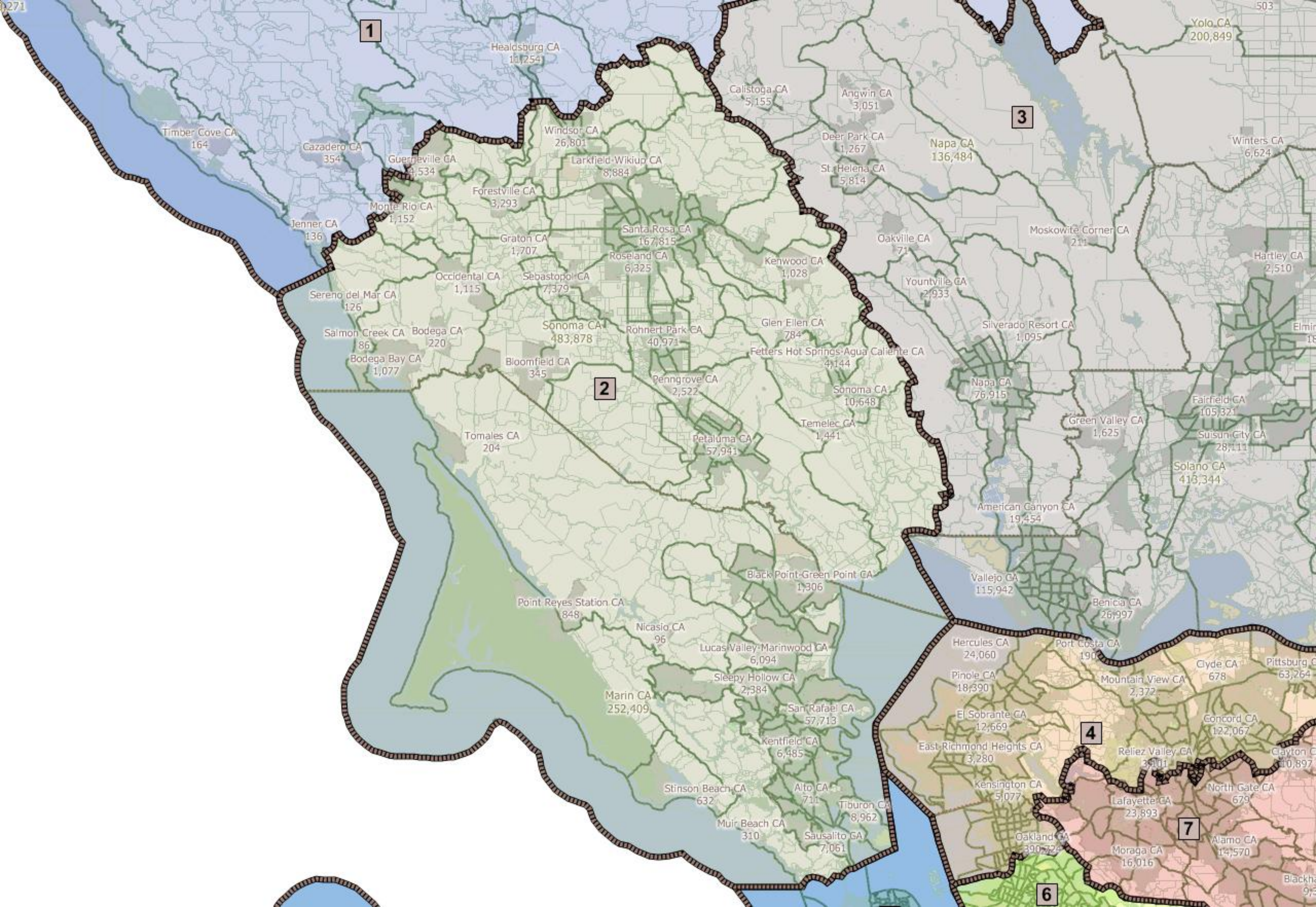
4,415

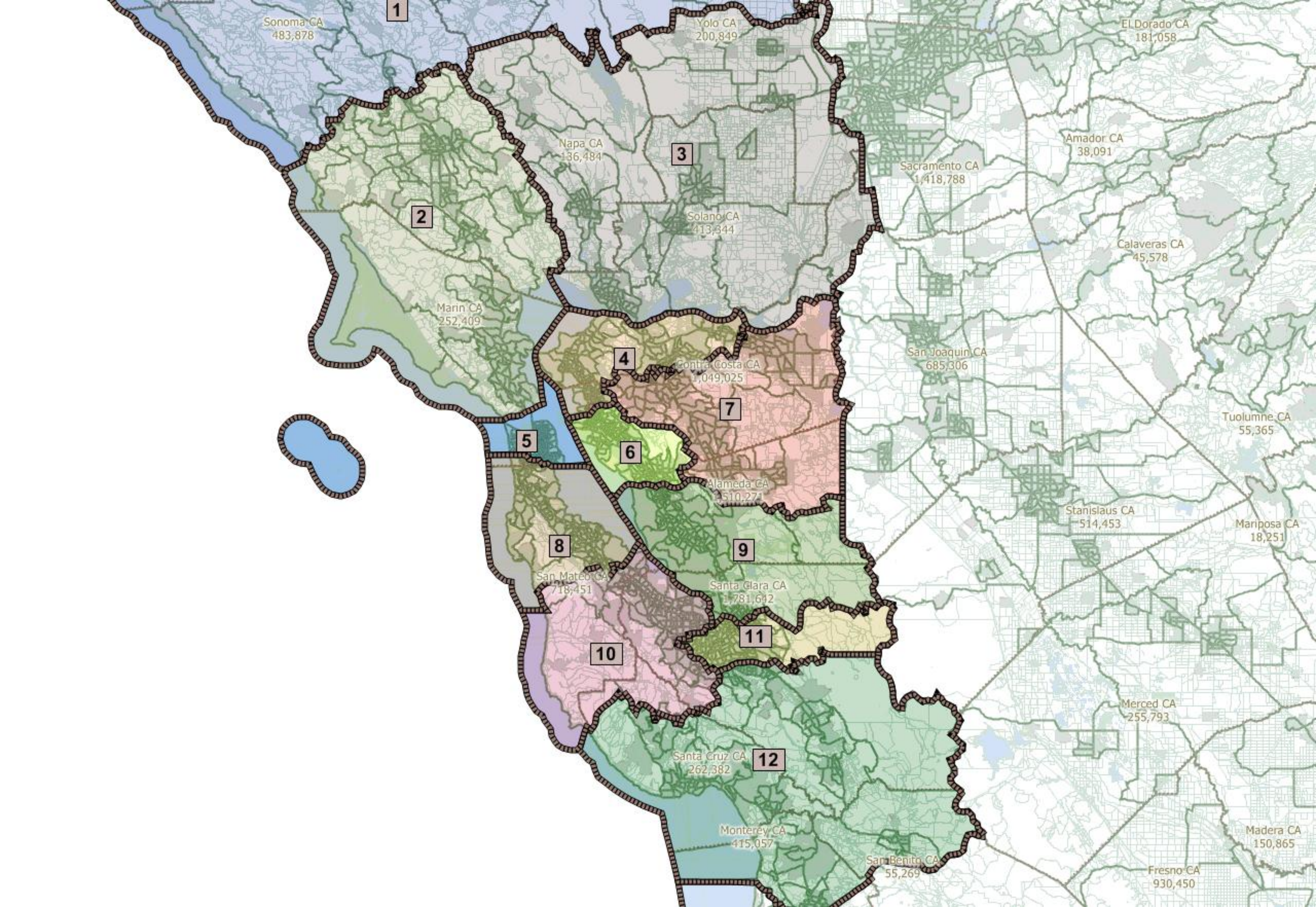
4,415

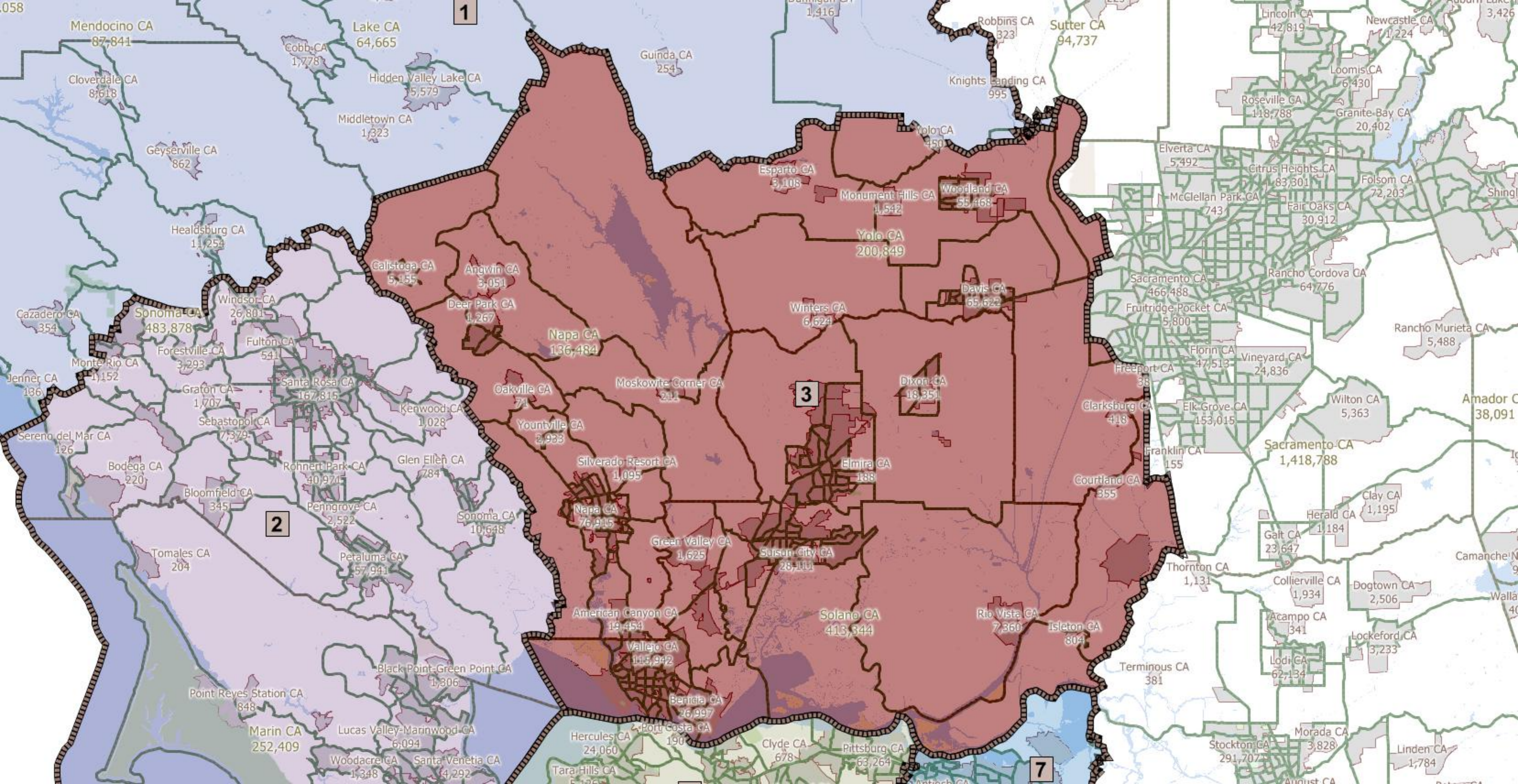
4,415

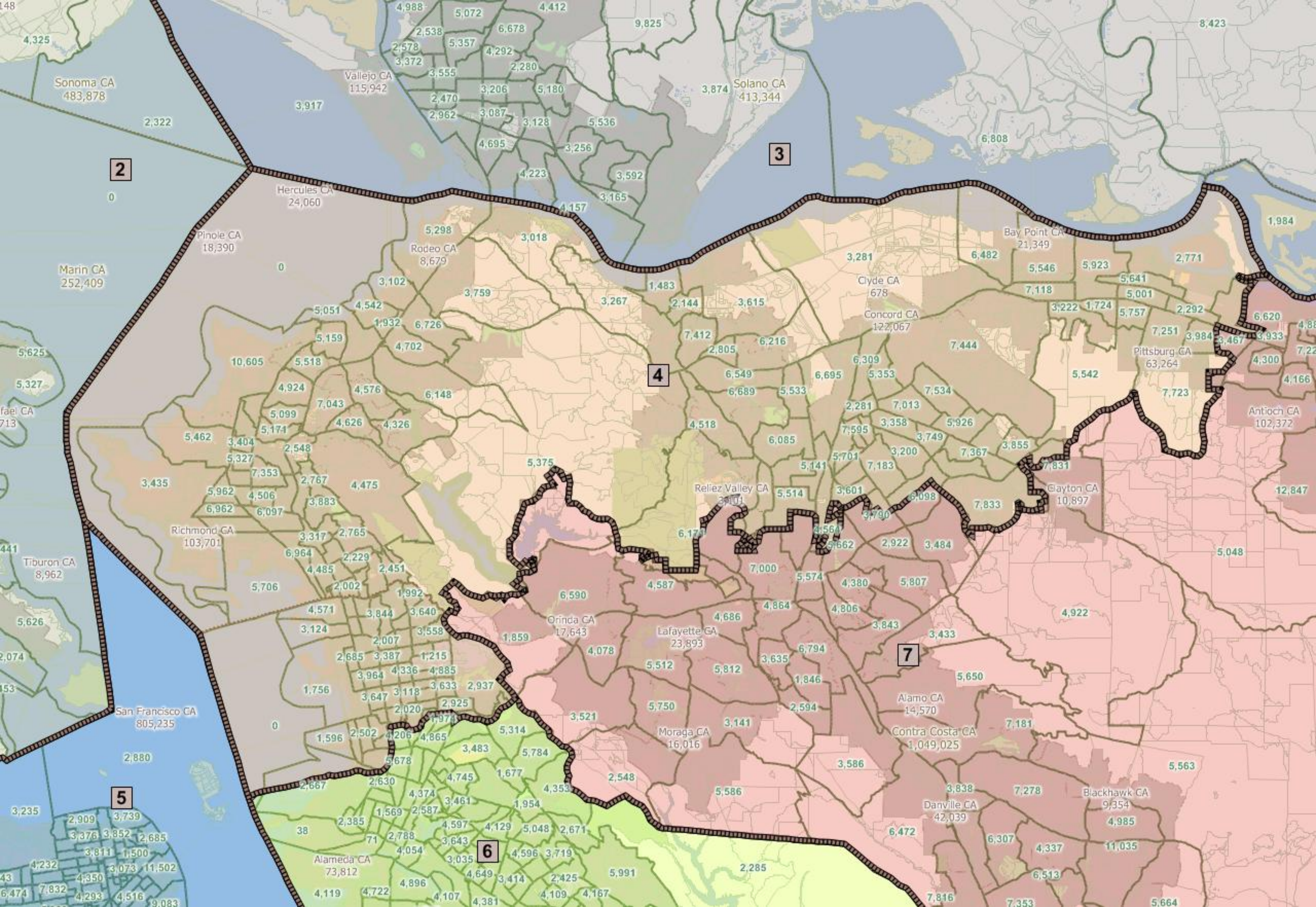
4,415

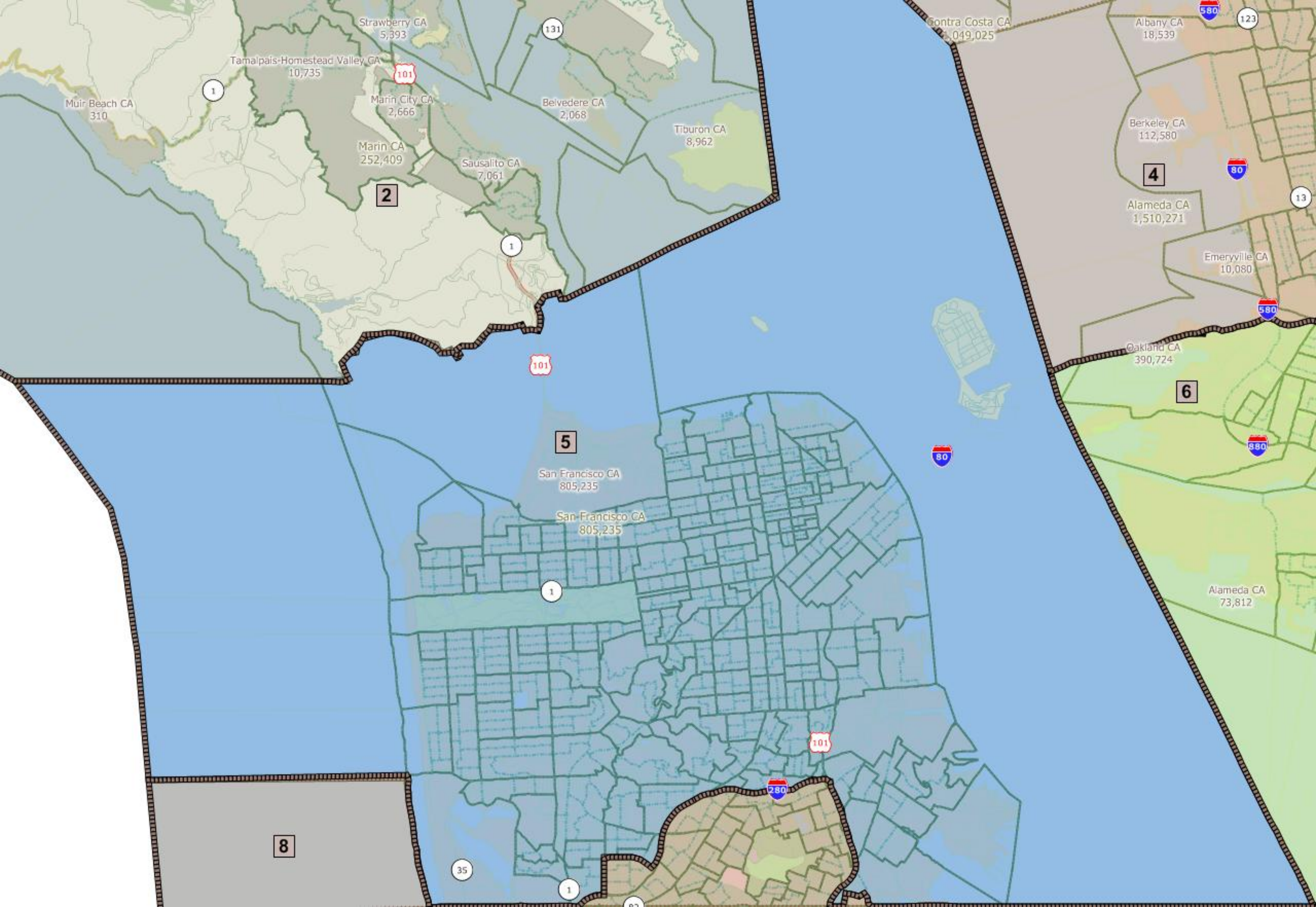


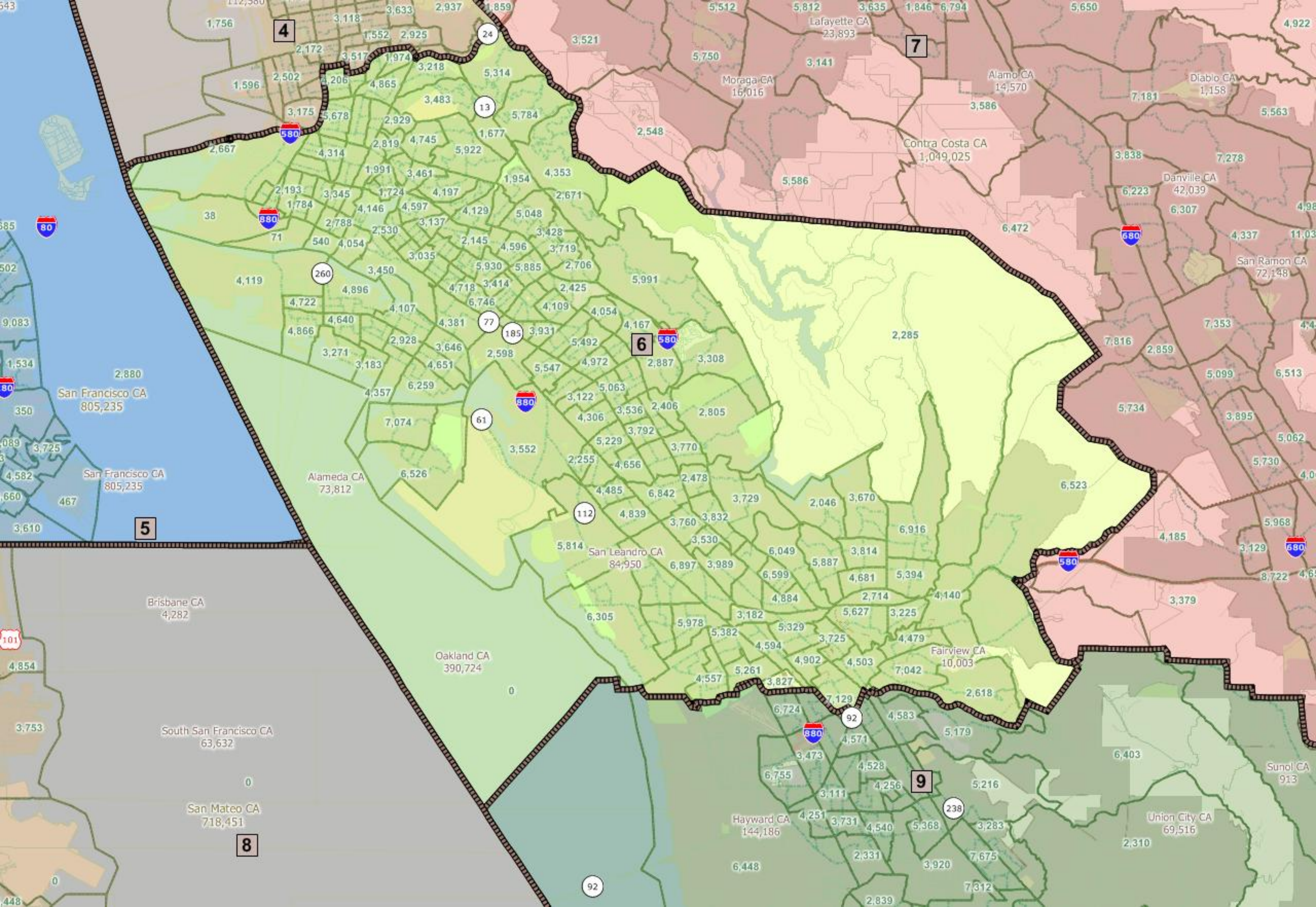


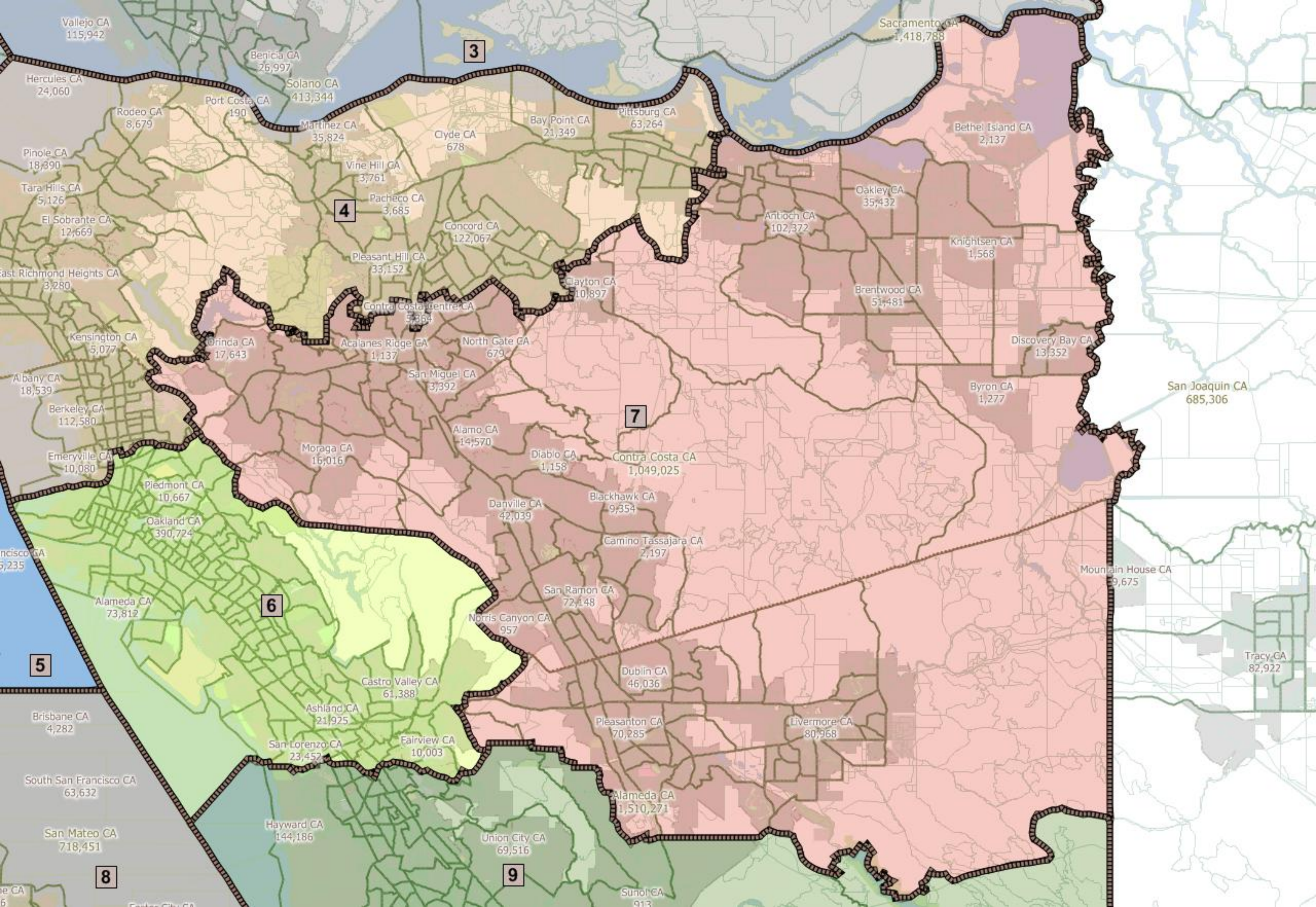


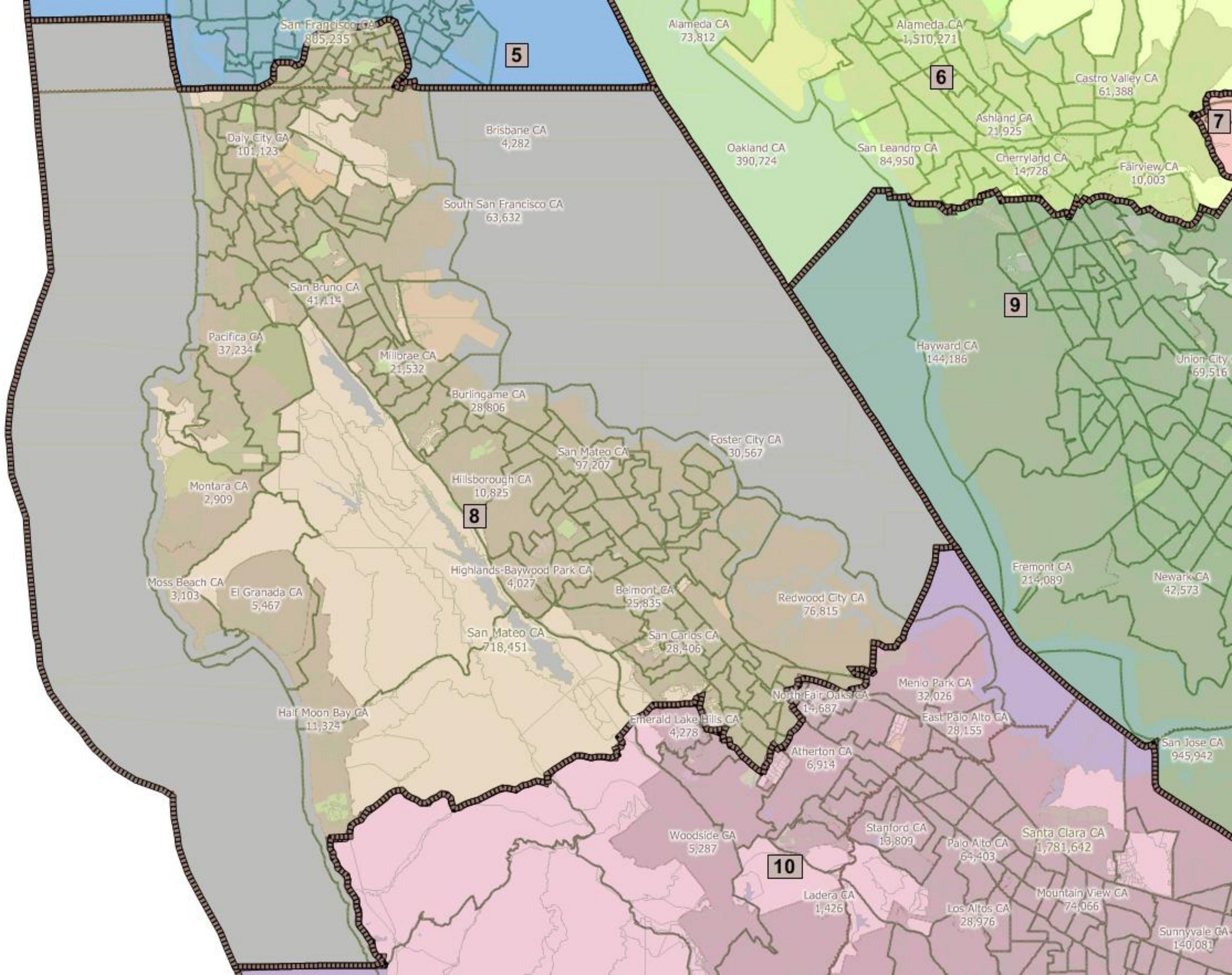


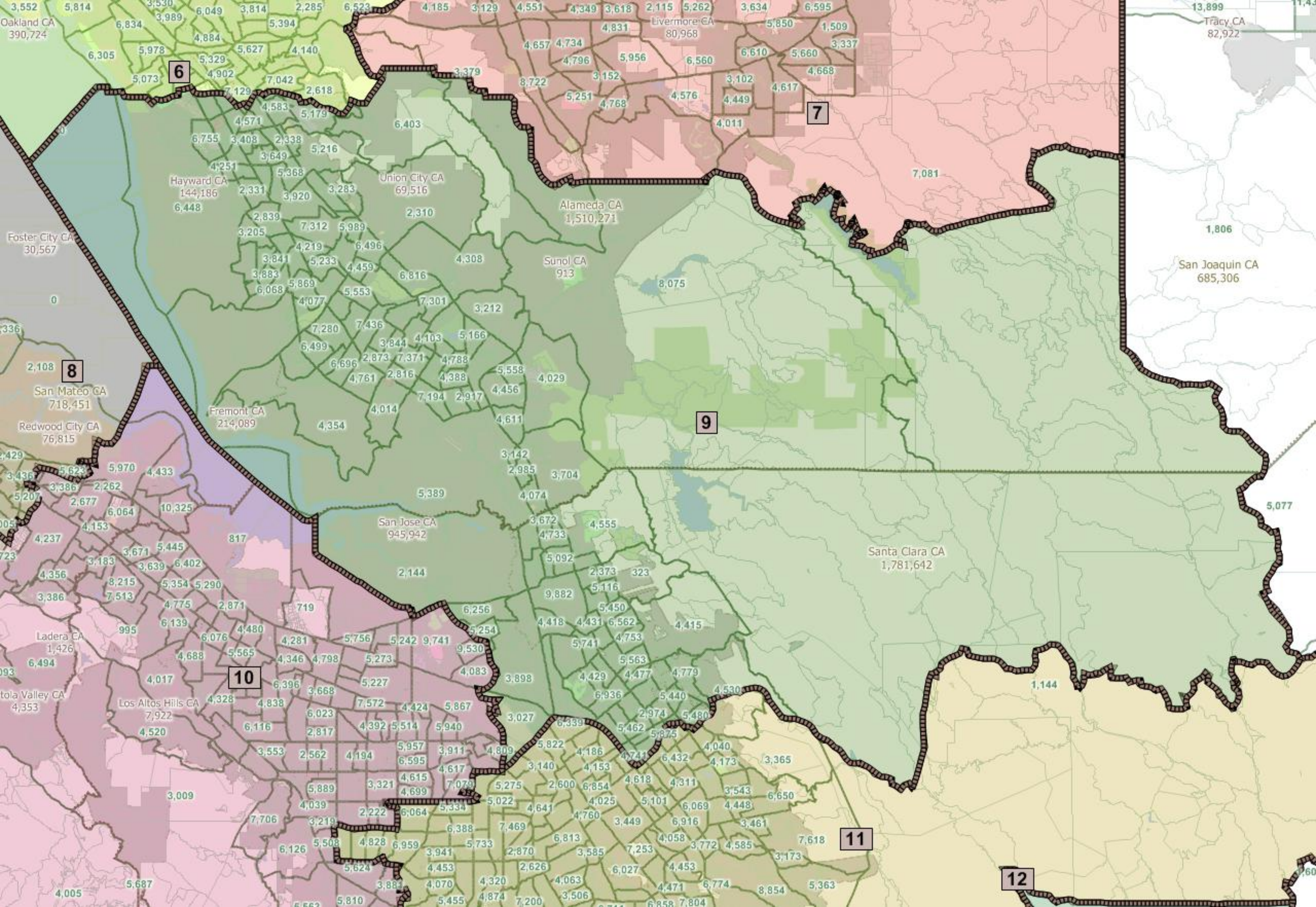












District	Population	Deviation	[% Deviation]	[Hispanic Origin]	[% Hispanic Origin]	NH_Wht	[% NH_Wht]	NH_BlK	[% NH_BlK]	NH_Ind	[% NH_Ind]	NH_Asn	[% NH_Asn]	NH_Hwn	[% NH_Hwn]	NH_Oth	[% NH_Oth]	[18+_Pop]
	28819099	28,116,194	4,000%	11960047	41.5%	11144886	38.67%	1689454	5.86%	116986	0.41%	3075594	10.67%	85529	0.3%	63131	0.22%	21411542
1	702905	0	0%	116978	16.64%	518714	73.8%	7147	1.02%	22565	3.21%	12806	1.82%	1043	0.15%	1263	0.18%	546665
10	702905	0	0%	119069	16.94%	323665	46.05%	16176	2.3%	1160	0.17%	212365	30.21%	4835	0.69%	1881	0.27%	540962
11	702904	-1	-0%	248162	35.31%	215935	30.72%	20935	2.98%	1727	0.25%	193181	27.48%	2659	0.38%	1382	0.2%	530343
12	702905	0	0%	299908	42.67%	310264	44.14%	9941	1.41%	2446	0.35%	59491	8.46%	1355	0.19%	1342	0.19%	521361
2	702905	0	0%	150290	21.38%	481201	68.46%	13233	1.88%	3770	0.54%	30977	4.41%	1842	0.26%	1903	0.27%	551011
3	702905	0	0%	189225	26.92%	323424	46.01%	63641	9.05%	3089	0.44%	88882	12.64%	3882	0.55%	2005	0.29%	537212
4	702905	0	0%	187141	26.62%	284774	40.51%	82662	11.76%	1966	0.28%	112670	16.03%	3084	0.44%	2644	0.38%	552686
5	702905	0	0%	93186	13.26%	325653	46.33%	41151	5.85%	1685	0.24%	212646	30.25%	2326	0.33%	2266	0.32%	615331
6	702904	-1	-0%	178457	25.39%	213188	30.33%	134735	19.17%	2226	0.32%	141284	20.1%	4544	0.65%	2025	0.29%	546614
7	702905	0	0%	116119	16.52%	416399	59.24%	34847	4.96%	1914	0.27%	102982	14.65%	2179	0.31%	1705	0.24%	520151
8	702905	0	0%	170713	24.29%	258810	36.82%	17978	2.56%	1122	0.16%	221003	31.44%	7773	1.11%	2683	0.38%	554073
9	702904	-1	-0%	184424	26.24%	139340	19.82%	31904	4.54%	1594	0.23%	311189	44.27%	7526	1.07%	1357	0.19%	530965

NH_Oth	[% NH_Oth]	[18+_Pop]	[% 18+_Pop]	[H18+_Pop]	[% H18+_Pop]	[NH18+_Wht]	[% NH18+_Wht]	[NH18+_Blk]	[% NH18+_Blk]	[NH18+_Ind]	[% NH18+_Ind]	[NH18+_Asn]	[% NH18+_Asn]	[NH18+_Hwn]	[% NH18+_Hwn]	[NH18+_Oth]	[% NH18+_Oth]
63131	0.22%	21411542	74.3%	7872901	36.77%	9215616	43.04%	1271144	5.94%	90879	0.42%	2454655	11.46%	64037	0.3%	43337	0.2%
1263	0.18%	546665	77.77%	73654	13.47%	426329	77.99%	5706	1.04%	15890	2.91%	9563	1.75%	806	0.15%	969	0.18%
1881	0.27%	540962	76.96%	81380	15.04%	267016	49.36%	13049	2.41%	866	0.16%	162332	30.01%	3414	0.63%	1149	0.21%
1382	0.2%	530343	75.45%	167064	31.5%	182275	34.37%	16792	3.17%	1363	0.26%	149024	28.1%	2049	0.39%	925	0.17%
1342	0.19%	521361	74.17%	195237	37.45%	257100	49.31%	7732	1.48%	1961	0.38%	46796	8.98%	1081	0.21%	901	0.17%
1903	0.27%	551011	78.39%	98875	17.94%	399454	72.49%	10652	1.93%	2953	0.54%	25146	4.56%	1490	0.27%	1353	0.25%
2005	0.29%	537212	76.43%	123593	23.01%	269553	50.18%	48502	9.03%	2509	0.47%	72490	13.49%	3073	0.57%	1596	0.3%
2644	0.38%	552686	78.63%	125906	22.78%	245175	44.36%	63977	11.58%	1621	0.29%	95089	17.2%	2303	0.42%	1873	0.34%
2266	0.32%	615331	87.54%	75788	12.32%	297817	48.4%	34705	5.64%	1546	0.25%	185531	30.15%	1751	0.28%	1733	0.28%
2025	0.29%	546614	77.77%	120122	21.98%	184900	33.83%	104926	19.2%	1834	0.34%	114862	21.01%	3295	0.6%	1392	0.25%
1705	0.24%	520151	74%	75758	14.56%	327419	62.95%	24782	4.76%	1503	0.29%	75078	14.43%	1713	0.33%	1049	0.2%
2683	0.38%	554073	78.83%	122612	22.13%	216815	39.13%	14772	2.67%	917	0.17%	179028	32.31%	5740	1.04%	1838	0.33%
1357	0.19%	530965	75.54%	124609	23.47%	120389	22.67%	23540	4.43%	1178	0.22%	239488	45.1%	5647	1.06%	909	0.17%