

----- Forwarded message -----

From: **Matt Cucuzza** <[REDACTED]>

Date: Fri, May 20, 2011 at 12:41 PM

Subject: Presentation by Carole Groom at Oakland Public Comment Hearing May 21 (Saturday)

To: "[REDACTED]" <[REDACTED]>

Hello,

I would like to submit this PowerPoint presentation that Carole Groom plans on giving tomorrow at the hearing in Oakland. Carole is the President of the San Mateo County Board of Supervisors. She will also be bringing hard copies of the presentation outline and the files on a usb flash drive.

Thanks,

Matt Cucuzza

Matthew D. Cucuzza
Account Executive

McGovern

CONSULTING

[REDACTED]
San Bruno, CA 94066
[REDACTED]
[REDACTED]



Senate Districts

San Francisco, San Mateo, and Santa Clara
Counties

Carole Groom, President
San Mateo County Board of Supervisors
David Lim, San Mateo City Council

San Mateo County

- Population: 718,451 (as of 2010 Census)
- Among the most affluent counties in the nation
- One of most culturally and geographically diverse counties in California
 - Dense Asian influence in Daly City and Colma in north to large concentration of African Americans and Latinos in East Palo Alto to the south
 - County touches both San Francisco Bay and Pacific Ocean
 - Commitment to environment evident at both locations

Economic Engine

- San Mateo County is home to some of Bay Area's biggest job generators:
 - Oracle
 - Electronic Arts
 - San Francisco International Airport
 - Genentech
 - Kaiser Permanente
 - Youtube
- Home to three community colleges , two private universities, and new Stanford University expansion

Current Representatives

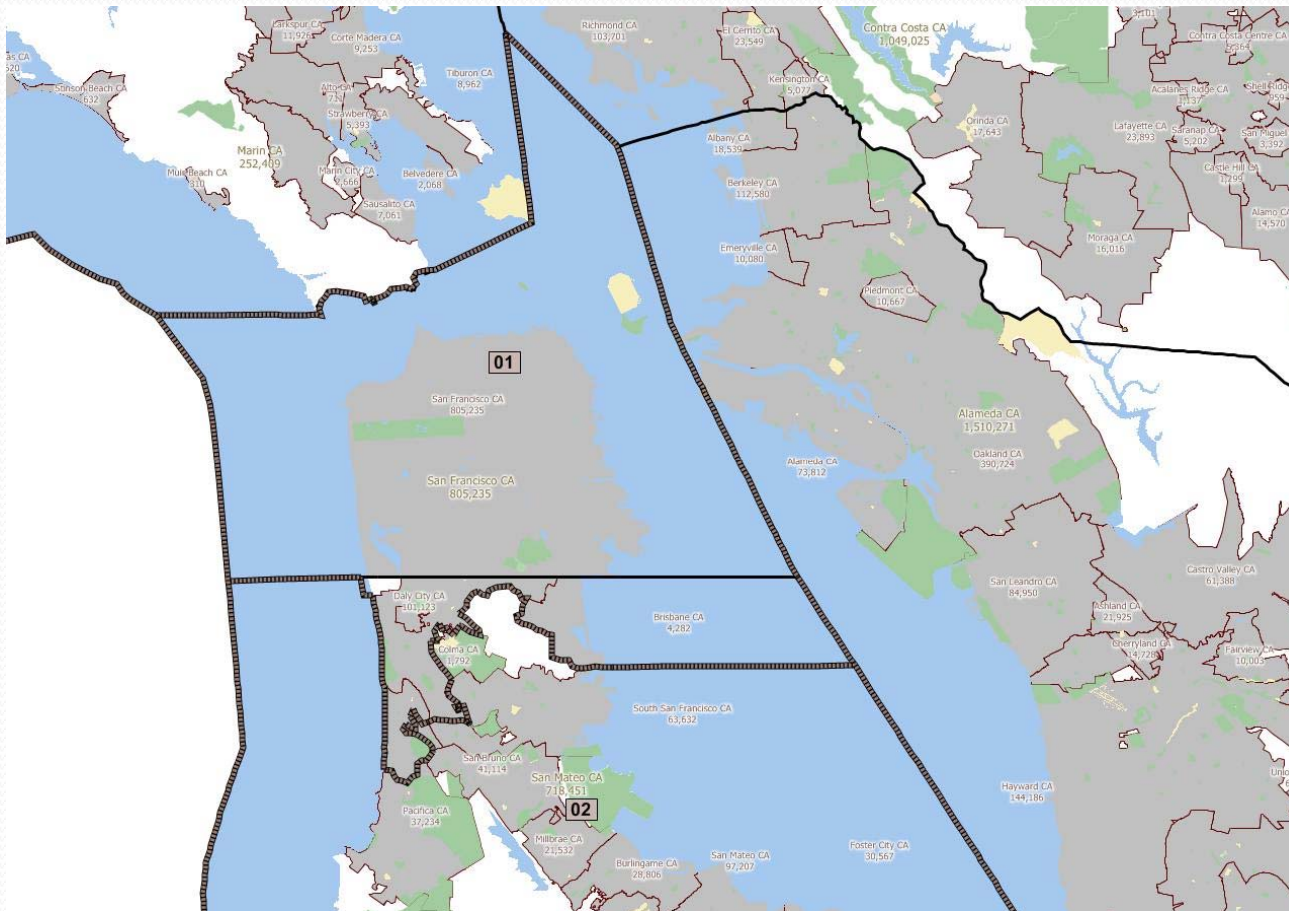
- Two state senators represent San Mateo County, yet neither originated from or live in our county.
 - Leland Yee, District 8, from San Francisco
 - Joe Simitian, District 11, from Santa Clara County
 - Given our diverse culture, educational institutions, and importance to region, we believe San Mateo County should have at least one Senate District that is predominantly within county lines.

Populations

- Population of San Francisco County:
 - 805,235 as of 2010
- Population of San Mateo County:
 - 718,451 as of 2010
- Neither county has the population numbers to keep a Senate district completely within its boundaries.

Northern District

- Includes all of San Francisco, Daly City, Colma, Brisbane, and parts of Pacifica.



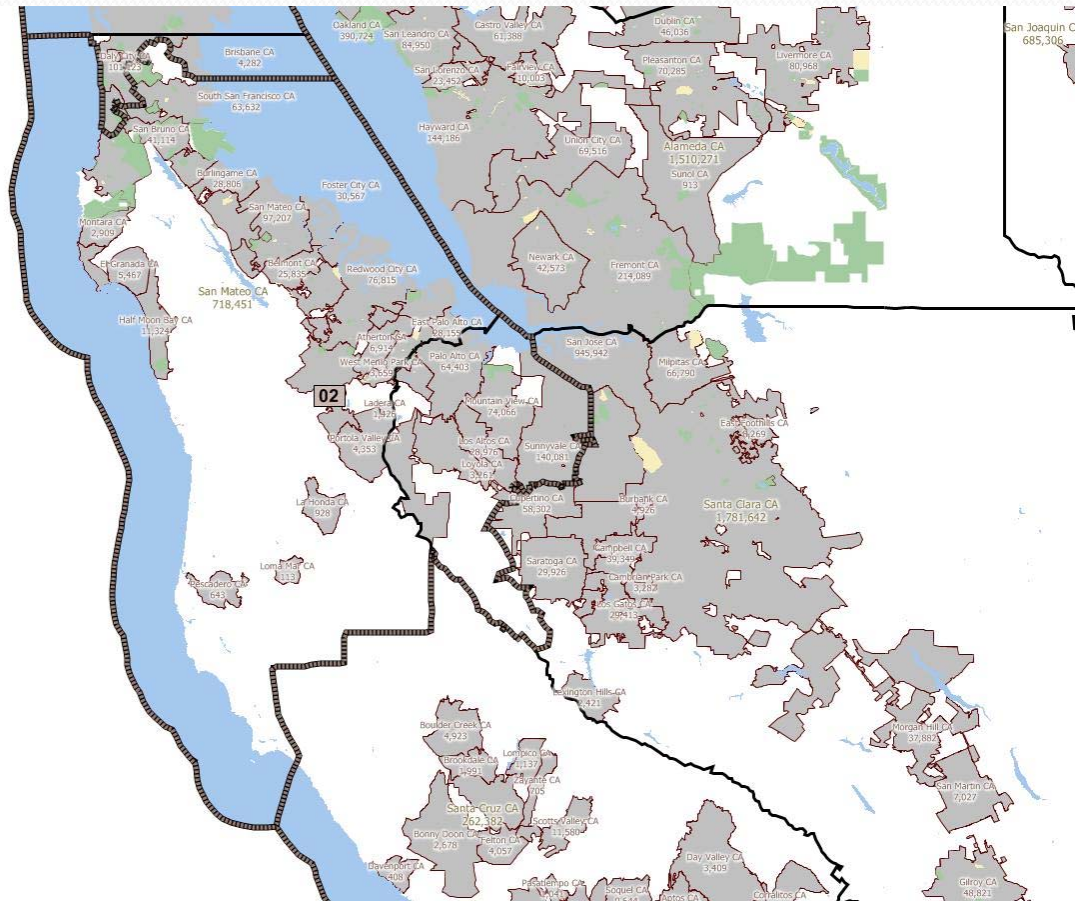
Northern District

- Area: San Francisco and San Mateo County
- Population: 931,349
- % Deviation: 0%
- Hispanic population: 150,556
- Hispanic %: 16.17%
- Non-Hispanic (NH) Caucasian population: 362,000
- NH Caucasian %: 38.87
- NH Black population: 50,865
- NH Black %: 5.46
- NH Asian population: 328,764
- NH Asian %: 35.3
- Other:
 - Indian, Hawaiian %: 0.66%

***Over 58 percent
minority
population in
Northern District**

Southern District

- Includes remaining San Mateo County cities and northern Santa Clara County cities and communities including Los Altos, Los Altos Hills, Palo Alto, Mountain View, and Sunnyvale.



Southern District

- Area: San Mateo County and Santa Clara County
- Population: 931,495
- % Deviation: 0.02%
- Hispanic population: 203,693
- Hispanic %: 21.87%
- Non-Hispanic (NH) Caucasian population: 438,050
- NH Caucasian %: 47.03
- NH Black population: 20,800
- NH Black %: 2.23
- NH Asian population: 221,878
- NH Asian %: 23.82
- Other:
 - Indian, Hawaiian %: 1.25

***Southern District
holds a minority
“majority”
population**

Final Thoughts

- These Districts would accomplish many of the Commissions' goals:
 - Both Districts are minority “majority” districts, giving minority populations an excellent chance of being elected.
 - Both Districts respect geographic boundaries by keeping San Francisco all together, and most San Mateo County cities together with northern Santa Clara County cities.
 - Two Assembly seats can easily nest in each district and also gives majorities to minority communities.
 - Provide a logical solution instead of splitting San Francisco into two with Marin and Sonoma and San Mateo County.

Numerous areas of Common Interest in Both Districts

- Extremely ethnically diverse
- Major employment centers
- Common transportation links – roads, mass transit, airport
- Common geographical features – Pacific Ocean and San Francisco Bay
- Shared infrastructure – Hetch Hetchy water system, BART, Caltrain
- Compact districts
- Gives each county a population majority in each District