



CITY OF SIMI VALLEY

Home of The Ronald Reagan Presidential Library

August 12, 2011

California Citizens Redistricting Commission
901 P Street, Suite 154-A
Sacramento, CA 95814

RE: Final Preliminary Electoral District Boundary Maps

Dear Honorable Members of the Commission:

On Friday, July 29, 2011 the Commission released for public review the Preliminary Final Maps that will determine representation for communities across the state for the next 10 years. These maps were to be drawn in consideration of criteria set forth in California law, one of which was maintaining communities of interest, or COI, to the maximum extent possible.

The City of Simi Valley has now appealed to you on six separate occasions regarding Simi Valley's COI with Ventura County and the Commission's repeated exclusion of Simi Valley from the rest of the County. Copies of our previous communications are enclosed with this letter. Despite our providing oral and written testimony documenting Simi Valley's social, economic, and geographic COI with Ventura County, and our presenting maps that would provide more rational boundaries for our community's Congressional representation, our letters and testimony have gone unheard and have even been misinterpreted by the Commission. It would further appear that each successive comment made by our City has been met with increasingly adverse boundary proposals for our community.

The Commission has now approved Preliminary Final Maps that split Simi Valley into two Congressional Districts, with the bulk of the City's population to be included with Los Angeles County and a small portion aligned with Ventura County. The Preliminary Final Maps now also include Simi Valley, in its entirety, in a Los Angeles County based Assembly District, whereas the first Draft Maps released on June 10, 2011, included the City with much of Ventura County. These maps remain in stark contrast to the case repeatedly presented by the City of Simi Valley that Simi Valley is more appropriately aligned with Ventura County.

In preparing the electoral district boundary maps, the Commission has failed to recognize that our City is one community. Simi Valley does not include neighborhoods that share a COI with Los Angeles County and other neighborhoods that share a COI with Ventura County. Interestingly, the split of Simi Valley into two Congressional Districts is not drawn along a main street or any clear dividing line; instead a neighborhood is dissected by a jagged line as though the Commission were selecting the specific population that it wanted to include in the

district. Even so, with this most recent drawing of lines, the Commission accepts the premise that Simi Valley indeed has a COI with Ventura County; why then would the Commission not accept the City's recommendation that has been repeatedly relayed to you to place Simi Valley, in its entirety, with Ventura County?

Yet, the Commission has aligned the City of Thousand Oaks with Ventura County when Thousand Oaks has actively aligned itself with cities in Los Angeles County and has publicly said that when their community was represented with cities in Los Angeles, their interests were represented and they are not "overly concerned" should they be aligned again with Los Angeles, as I stated in my July 22, 2011 letter to the Commission.

Prior to the first Draft Maps being released, on May 19, 2011, the City of Simi Valley sent a letter to the Commission requesting that our City be kept together and that communities of Ventura County be kept together to the maximum extent possible, in consideration of the common social and economic interests we share.

Once the first Draft Maps were released, our City took an active role in voicing our concerns to the Commission, under the impression that our concerns would be heard and considered when the second Draft Maps were drawn and released. However, second Draft Maps were never released, just "Visualizations" that were difficult to access and under continuous revision.

Council Member Barbra Williamson attended the Commission's hearing in Oxnard on June 22, 2011 to provide testimony on behalf of the City and entered a letter into the record again requesting that Ventura County be kept together. From the first draft of the Congressional District to the Preliminary Final Maps, the City of Simi Valley is the only city that is consistently excluded from the rest of the County. The first Congressional Draft Map that was released split 2,000 Simi Valley residents into the East Ventura District, splitting a master-planned community. Now the split is in another residential community, but the same problem still exists, after five previous attempts to state our case to the Commission.

Following Council Member Williamson's comments at the June 22, 2011 Public Hearing, the City Council convened on June 27, 2011 for a special meeting and adopted a Resolution, *which was hand delivered to your offices* indicating our community of interest is with Ventura County and providing alternate maps that, using the natural boundary of the mountain range that separates Simi Valley from Los Angeles County, would allow for Thousand Oaks and Simi Valley to be included in the same district to respect our COI. In that same communication, I expressed the concern that one of the Commissioners was unable to set his personal political views aside, was unable to fairly hear all of the public input, and was more concerned about protecting the interests of his home community than providing an equitable process to all cities in California.

On Thursday, July 14, 2011, I provided testimony before your Commission in Sacramento opposing the proposal to include Simi Valley in the Antelope Valley-Santa Clarita Congressional District. I provided a verbal statement and distributed a packet of maps and a

California Citizens Redistricting Commission
August 12, 2011

comprehensive proposal to the Commissioners that would place Simi Valley in the East Ventura Congressional District. The proposal outlined the three steps that the Commission could implement to place Simi Valley in the East Ventura Congressional District, make Santa Clarita whole, and rebalance the populations of the three districts affected by this change.


The July 16, 2011 Line Drawing Instructions posted on the Commission's website contained a note related to my submission stating that "Simi Valley sent a handout drawing attention to a possible split in Santa Clarita." The final direction stated, "Make sure Santa Clarita is whole." Based on the notes made and published, the Commission misinterpreted the City's position that Simi Valley's community of interest with Ventura County be respected, instead selectively choosing pieces of information from our proposal. On July 22, 2011, I wrote to the Commission to inform you that the Line Drawing Instructions posted on your website in relation to my July 14 testimony were not representative of, nor responsive to, my statements. My letter also pointed out the affiliations and common interests the communities of Thousand Oaks, Westlake Village and Agoura Hills share across County lines, demonstrating that Thousand Oaks has openly aligned itself and has a much stronger connection with cities in Los Angeles County.

This is the City of Simi Valley's sixth appeal to the Commission through letters, public testimony and a City Council Resolution stating the City's primary priority that the integrity of Simi Valley's borders be maintained.

Now that the Preliminary Final Maps have been released, and the Commission has stated that testimony will be accepted, but no changes made, we submit into the record the City of Simi Valley's sixth appeal to the Commission to reconsider the placement of Simi Valley in Los Angeles County based Congressional and Assembly Districts and place us where we belong, with the rest of our City and Ventura County.

Should your staff require further details on our proposal, they may contact Assistant City Manager Laura Behjan at (805) 583-6701.

Sincerely,



Robert O. Huber
Mayor

Enclosures: Letter to the Commission (dated May 19, 2011)
Letter and Testimony to the Commission (dated June 22, 2011)
Letter, Resolution and Maps to the Commission (dated June 27, 2011)
Testimony and Proposal to the Commission (dated July 14, 2011)
Letter to the Commission (dated July 22, 2011)

cc: City Council
City Manager
City Attorney
Assistant City Manager, Government Affairs



CITY OF SIMI VALLEY

Home of The Ronald Reagan Presidential Library

May 19, 2011

California Citizens Redistricting Commission
1130 K Street, Suite 101
Sacramento, CA 95814

RE: REGION 5 DISTRICT MAPS

Dear Honorable Members of the Commission:

On behalf of the Simi Valley City Council, I am writing to offer the City of Simi Valley's position on the drawing of electoral district boundaries as it relates to our City and region. As the Commission considers adjustments to California's electoral district boundaries, our City requests that the communities within Ventura County be kept together to the maximum extent possible.

The ten cities of Ventura County, of which Simi Valley is part, share similar and common social and economic interests. Our communities work with many of the same social service providers, and deliver a number of governmental programs through a single provider. As examples, half of the County's ten cities contract with the Ventura County Sheriff's Department; six of the cities are serviced by the Ventura County Fire District; and five of the cities receive library services through the Ventura County Free Library System. In addition, the governmental jurisdictions within Ventura County collaborate on regional policy issues through such bodies as the Ventura Council of Governments and Ventura County Transportation Commission. These longstanding and effective associations create an integrated and interconnected community of interest that should be maintained to the greatest extent possible.

Thank you for your consideration of our City's position as you draw the boundary maps that will serve our state through the decade. The Simi Valley City Council greatly appreciates the diligence with which the Commission is carrying out its responsibility in service to the citizens of our state.

Sincerely,

Robert O. Huber
Mayor

cc: City Council
City Manager
City Attorney
Assistant City Manager, Government Affairs



June 22, 2011

California Citizens Redistricting Commission
901 P Street, Suite 154-A
Sacramento, CA 95814

RE: Proposed Antelope Valley-Santa Clarita and East Ventura Congressional Districts

Dear Honorable Members of the Commission:

On behalf of the Simi Valley City Council, I am writing to provide the City of Simi Valley's position on the proposed electoral district boundary maps related to our City and region. The Simi Valley City Council's primary priority for electoral representation is to maintain the integrity of Simi Valley's borders within any district that may be established. In addition, as was communicated in my May 19, 2011 letter, the City Council desires that the communities within Ventura County be kept together to the maximum extent possible, as our cities share similar and common social and economic interests.

With specific respect to the proposed Antelope Valley - Santa Clarita and East Ventura Congressional Districts, we are concerned that the proposed Antelope Valley - Santa Clarita Congressional District has been drawn to include all but approximately 2,000 of Simi Valley's 126,000 residents. These 2,000 residents are members of the master planned, Wood Ranch community and were included in the neighboring proposed East Ventura Congressional District. The proposed boundaries fracture neighborhoods in Wood Ranch and place neighbors living on opposite sides of the street in different Congressional Districts. In addition, residential properties on Presidential Drive, that were recently incorporated into the Simi Valley city limits, have been carved away from the Antelope Valley - Santa Clarita District and into the East Ventura District. These divisions appear inconsistent and incompatible with the Commission's goal of respecting neighborhood boundaries to the extent possible.

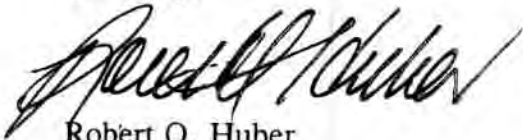
The City Council understands the ripple effects that adjusting electoral district lines presents, however, moving the proposed line slightly to the west will respect the City's boundary line and the neighborhoods of the Wood Ranch community. The affected areas include parts of Presidential Drive, some properties west of Country Club Drive, and portions of neighborhoods west of Wood Ranch Parkway. This modification will place all of Simi Valley in the same Congressional District and serve to incorporate the Commission's criteria to respect the boundaries of cities, neighborhoods and communities of interest.

June 22, 2011
California Citizens Redistricting Commission
Page 2

From the broader perspective, we encourage the Commission, to the extent feasible, to keep the communities within Ventura County intact when finalizing the electoral district maps. The cities of Ventura County have a long tradition of coordination, based on shared interests, that form a viable community of interest.

As the Commission considers public input leading up to presentation of the final district maps on August 15, 2011, we respectfully request the Commission to direct that the maps be drawn so as to keep our City whole and, to the extent possible, keep Ventura County's cities together. Should your staff require further details on our recommendations, they may contact Assistant City Manager Laura Behjan at (805) 583-6701. Thank you for considering our City's position on this important matter and for your service to the citizens of our state.

Sincerely,

A handwritten signature in black ink, appearing to read "Robert O. Huber", written in a cursive style.

Robert O. Huber
Mayor

cc: City Council
City Manager
City Attorney
Assistant City Manager, Government Affairs

TESTIMONY TO CALIFORNIA CITIZENS REDISTRICTING COMMISSION
COUNCIL MEMBER BARBRA WILLIAMSON
JUNE 22, 2011

Good evening. My name is Barbra Williamson, City Council Member from Simi Valley, representing the City Council and the residents of our community.

Thank you for the opportunity to comment this evening, and for your hard work and dedication to the complex task of setting boundaries for our State's electoral districts.

In consideration of your time, I am submitting into the record a letter signed by Simi Valley Mayor Bob Huber that more fully explains the City Council's priorities that first, the integrity of our City's borders be maintained, and second, that communities within Ventura County be kept together as much as possible. I recognize your task is not easy and any change made to the draft maps in one district could have ripple effects in another. We do understand that changes are not to be made lightly.

That said, our community is particularly concerned with the proposed Antelope Valley-Santa Clarita and East Ventura Congressional District maps. The boundaries that have been drawn for Simi Valley's Congressional representation would include all but 2,000 of our City's 126,000 residents in the Antelope Valley-Santa Clarita district, and would split those 2,000 into the adjoining East Ventura district. The line is drawn through the Wood Ranch neighborhood, a well-defined master planned community, and carves a mere one and one-half percent

of Simi Valley's residents away from their neighbors. This division fractures a neighborhood's identity, and seems inconsistent with the Commission's goal of respecting neighborhood boundaries to the extent possible.

On behalf of the residents of the Wood Ranch community, who have reached out to the City Council and expressed their concerns with becoming a "community divided," I implore you to re-examine the proposed boundary, keep Simi Valley intact, and represented by a single Congressional District.

For such a small segment of our community, I hope you may find a way to support our request. I also appreciate your consideration to keeping Ventura County's cities together. Thank you so much for your time and your efforts on behalf of all Californians.



CITY OF SIMI VALLEY

Home of The Ronald Reagan Presidential Library

June 27, 2011

California Citizens Redistricting Commission
901 P Street, Suite 154-A
Sacramento, CA 95814

RE: Proposed Electoral District Boundary Maps

Dear Honorable Members of the Commission:

On June 27, 2011, the Simi Valley City Council adopted the enclosed resolution to convey the City of Simi Valley's position on the drawing of electoral district boundary maps currently being undertaken by the California Citizens Redistricting Commission. The resolution is being hand delivered on our behalf to the Commission for your record.

Simi Valley City Council Member Barbra Williamson provided testimony during the Public Input Hearing held in Oxnard on Wednesday, June 22, 2011, requesting that the boundaries of Simi Valley, and to the extent possible Ventura County, be maintained. In response to that request, the Commission asked for a specific City recommendation for keeping Simi Valley intact in a single Congressional District, and we are therefore offering possible alternatives for your consideration. Each of these alternatives would incorporate Simi Valley into the proposed East Ventura Congressional District and respect the boundaries of Simi Valley, and, to the extent possible, Ventura County. Our proposals both use the open space mountain range separating Los Angeles County and the San Fernando Valley from Simi Valley, a clear demarcation line, to create a natural separation of "communities of interest," similar to the Commission's approach for proposed districts to the north.

Alternative Maps A and B present more detailed options providing for Simi Valley and Moorpark's inclusion in the East Ventura Congressional District. The Alternative Map A would align coastal communities of interest by incorporating areas including Ventura, Oxnard, and Port Hueneme into the proposed San Luis Obispo – Santa Barbara Congressional District. Alternative Map B would incorporate the Los Angeles County communities of Westlake, Agoura Hills, and Malibu into the West Los Angeles – Downtown Congressional District. These two proposals present opportunities to respect the boundaries of coastal communities and Los Angeles County, respectively.

June 27, 2011

California Citizens Redistricting Commission

Page 2

In either of these alternatives, placing Simi Valley and Moorpark in the East Ventura Congressional District would allow for the inclusion of a majority of, if not all, Lancaster in the proposed Antelope Valley-Santa Clarita Congressional District by extending the line north to the Kern County line (see Map C), and therefore avoid another division of a community of interest in that area.

The Simi Valley City Council appreciates and supports the Commission's mission in drawing boundary maps to ensure fair representation across the state. However, the City Council feels obligated to voice its concern that the Commission's appearance of objectivity may be compromised by a Commissioner's statement at a recent Public Input Hearing to the effect that certain recommendations that might affect the Commissioner's city of residence would not occur "in my lifetime." Further, we are concerned with what could be a potential conflict of interest, as this Commissioner also serves on the Advisory Committee of the Central Coast Alliance United for a Sustainable Economy (CAUSE), which has presented its own proposal for Congressional District boundaries. The Simi Valley City Council requests that all communities' interests be equally represented and considered in the drawing of the Second Draft Maps and that the Commission recognize that the application of personal preference to any Commissioners' own communities of interest is unfair to other communities and contrary to the Commission's mission.

Thank you for the opportunity to comment on this matter, and for the Commission's consideration of our City's proposed alternatives.

Sincerely,



Robert O. Huber
Mayor

Enclosures

cc: City Council
City Manager
City Attorney
Assistant City Manager, Government Affairs

RESOLUTION NO. 2011-36

A RESOLUTION OF THE CITY COUNCIL OF THE CITY OF
SIMI VALLEY CONVEYING TO THE CALIFORNIA
CITIZENS REDISTRICTING COMMISSION A CITY
POSITION ON THE DRAWING OF ELECTORAL DISTRICT
BOUNDARIES

WHEREAS, the California Citizens Redistricting Commission was formed to draw electoral district boundary maps for California's Congressional, State Senate, State Assembly, and Board of Equalization seats in compliance with the federal Voting Rights Act; and

WHEREAS, among the criteria the California Citizens Redistricting Commission is to consider in the drawing of boundary maps are population, equal opportunity for representation, contiguity of districts, and respect for city, county, neighborhood and community of interest boundaries; and

WHEREAS, on June 10, 2011, the California Citizens Redistricting Commission released proposed boundary maps for California's electoral districts and is now inviting public testimony of these maps; and

WHEREAS, in oral and written testimony on June 22, 2011, the Simi Valley City Council expressed that its priorities for electoral representation are, first, the integrity of Simi Valley's borders be maintained and, second, Ventura County's community of interest, as reflected by historic geographic and social service associations between its cities, be respected by keeping the County together to the maximum extent possible; and

WHEREAS, Simi Valley is separated by an open space mountain range from Los Angeles County and the Antelope Valley, yet has contiguous boundaries of population to all of Ventura County; and

WHEREAS, the California Citizens Redistricting Commission's proposed Congressional boundary lines affecting Simi Valley fracture the tightly-knit master planned Wood Ranch neighborhood and segregate the majority of Simi Valley residents from their County and their neighbors; and

WHEREAS, the proposed boundary maps recognize the appropriate and rational boundaries of Simi Valley and its neighbors in the proposed State Assembly, State Senate, and Board of Equalization maps, and the Simi Valley City Council seeks a similar rational alignment of boundaries for its Congressional representation.

NOW, THEREFORE, THE CITY COUNCIL OF THE CITY OF SIMI VALLEY DOES HEREBY RESOLVE AS FOLLOWS:


SECTION 1. The Simi Valley City Council supports the inclusion of Simi Valley, in its entirety, in the currently proposed Santa Barbara-Ventura Senate District, the East Ventura Assembly District, and the Board of Equalization District.


SECTION 2. The Simi Valley City Council, having considered Simi Valley's geographic separation from the Antelope Valley-Santa Clarita area and the greater community of interest shared with Ventura County communities, respectfully requests and urges the California Citizens Redistricting Commission to modify the proposed East Ventura and Antelope Valley-Santa Clarita Congressional District boundary maps to include Simi Valley in its entirety in the East Ventura Congressional District, as a rational modification of the California Citizens Redistricting Commission's proposed maps, consistent with the mission goals, and objectives of the Commission.

SECTION 3. The City Clerk shall certify to the adoption of this resolution and shall cause a certified resolution to be filed in the Office of the City Clerk, and immediately transmit said resolution to the California Citizens Redistricting Commission for its consideration.

PASSED and ADOPTED this 27th day of June 2011.

Attest:

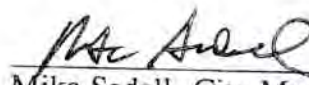

Wendy K. Green
Assistant City Clerk



Robert O. Huber, Mayor of the City of
Simi Valley, California

Approved as to Form:


Tracy M. Noonan, City Attorney

Approved as to Content:


Mike Sedell, City Manager

I hereby certify that the
foregoing is a true and
correct copy of the original
Date 6/27/2011

Office of the City Clerk

I, Assistant City Clerk of the City of Simi Valley, California, do hereby certify that the foregoing Resolution No. 2011-36 was regularly introduced and adopted by the City Council of the City of Simi Valley, California, at a Special Meeting thereof held on the 27th day of June 2011, by the following vote of the City Council:

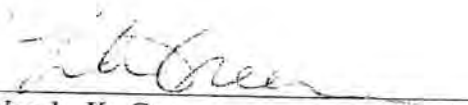
AYES: Council Members Judge, Becerra, Williamson,
and Mayor Huber

NAYS: None

ABSENT: Mayor Pro Tem Sojka

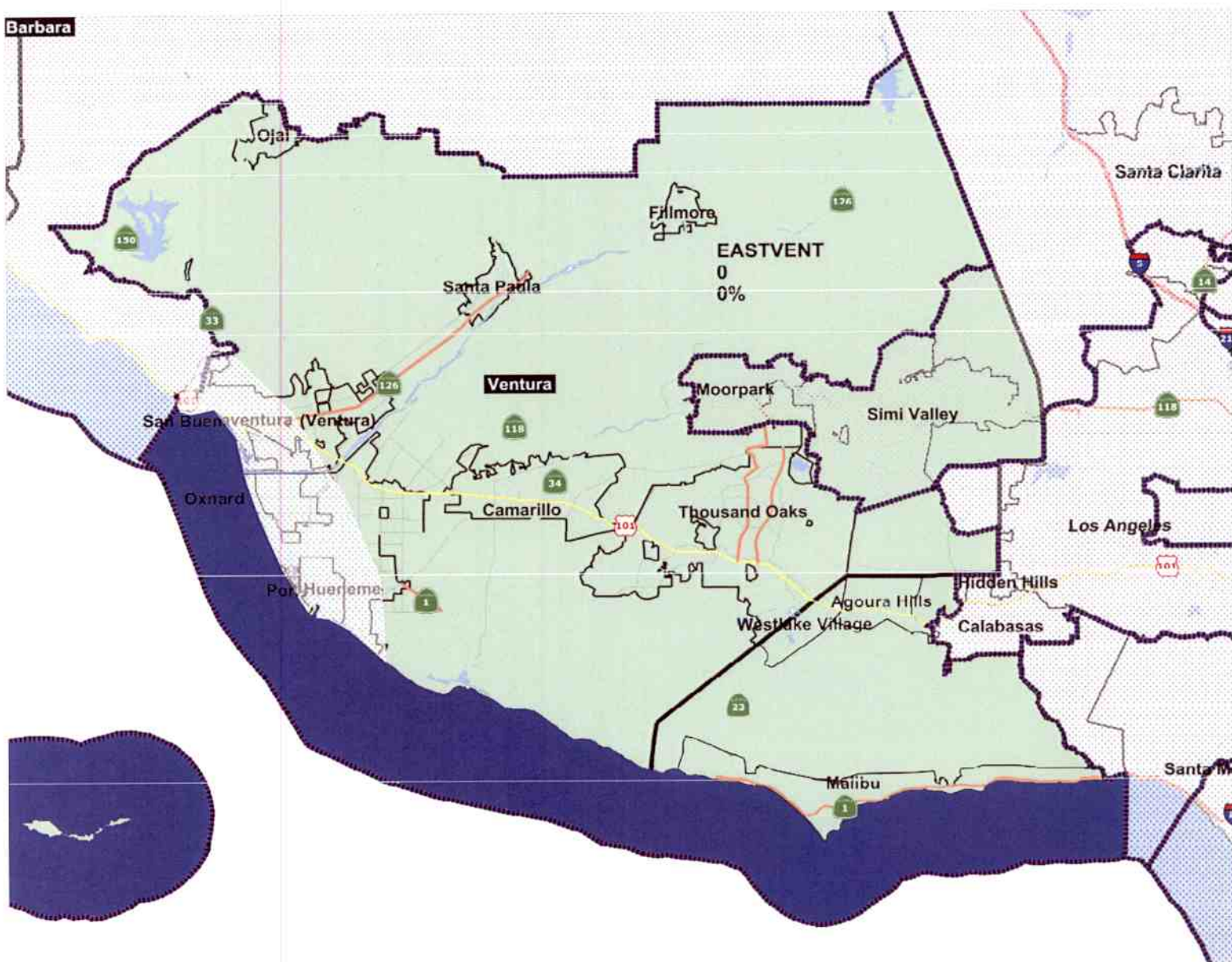
ABSTAINED: None

IN WITNESS WHEREOF, I have hereunto set my hand and affixed the official seal of the City of Simi Valley, California, this 27th day of June 2011.


Wendy K. Green
Assistant City Clerk

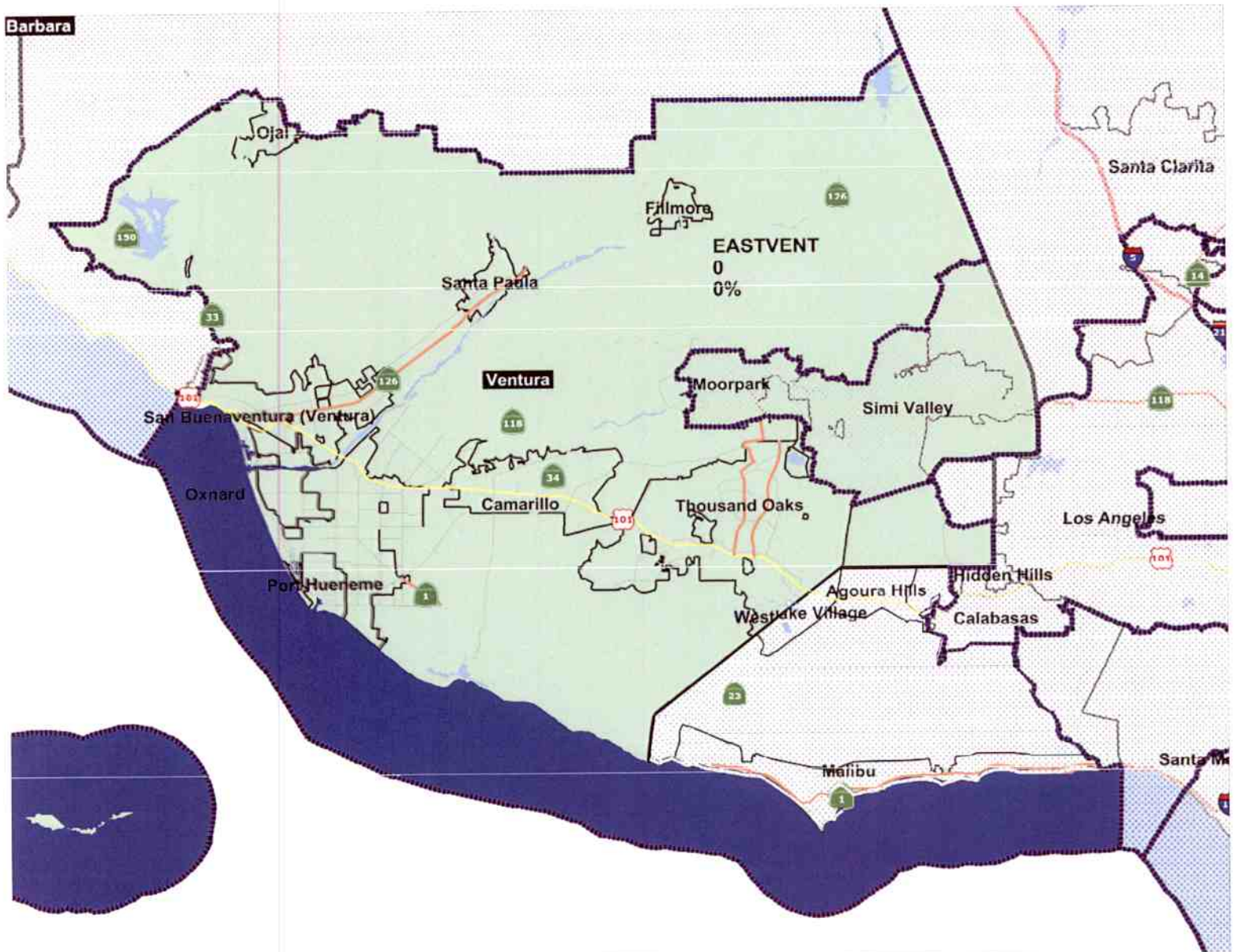
California Congressional - EASTVENT DETAIL

Map A



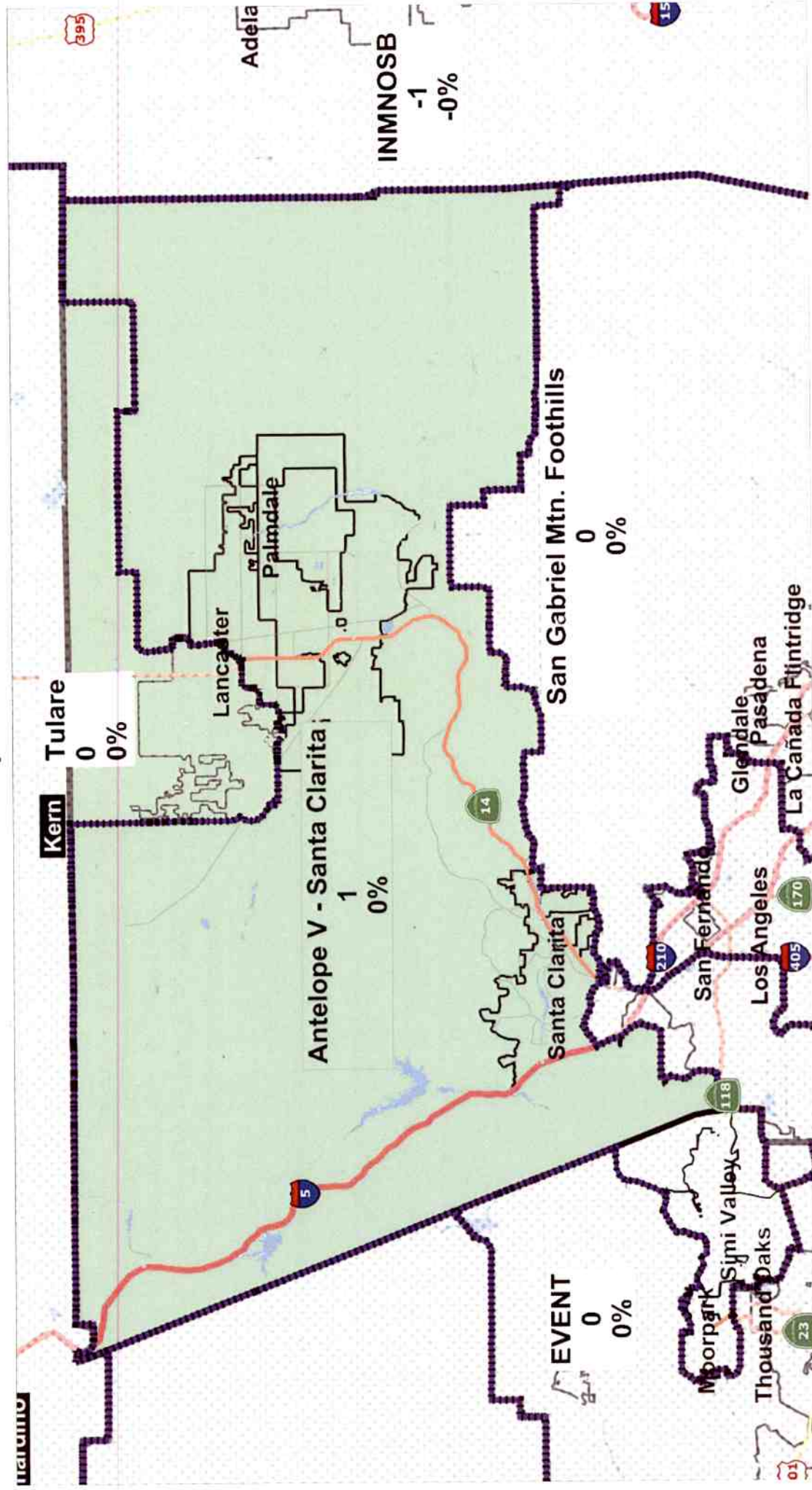
California Congressional - EASTVENT DETAIL

Map B



California Congressional - Antelope V - Santa Clarita

Map C



TESTIMONY TO CALIFORNIA CITIZENS REDISTRICTING
COMMISSION
SIMI VALLEY MAYOR BOB HUBER
JULY 14, 2011

I am Mayor Bob Huber from the City of Simi Valley. I have traveled here today to present alternative Congressional district configurations for our region that would better meet the Commission's objectives for setting boundaries, based on rational criteria that addresses geographic constraints, and contiguity of communities. The Commission is currently considering placing Simi Valley into the Antelope Valley-Santa Clarita district. This would unnaturally link Simi Valley across a mountain range to a population more than 30 miles away, diminishing representation for the 127,000 residents of Simi Valley. I am submitting a series of maps illustrating the separation and our proposal for a more logical configuration ---- a visualization that keeps Simi Valley an integral part of Ventura County and remains true to its commonly known historic designation as the "Gateway to Ventura County."

The first draft Antelope Valley – Santa Clarita Congressional District map splits the City of Santa Clarita between two districts, literally down its Main Street. The whole of Santa Clarita and a portion of Los Angeles could be placed into the Antelope Valley- Santa Clarita District, thus allowing for Simi Valley and Moorpark to shift into the East Ventura County District. This would cure the geographic and population separation caused by placing Simi Valley into the Antelope Valley map.

Recognizing that the Commission is constrained from making adjustments at the northern end of Ventura County, and considering continuity of urban areas, the 101 corridor from Thousand Oaks to Agoura Hills would then shift from the East Ventura District into the West San Fernando Valley-Calabasas District, as that corridor is continuously developed. Further, these communities, bridging two counties, have consciously elected to share their common interests, one example of which is the unification of the Thousand Oaks, Westlake Village and

Agoura Hills Chambers of Commerce. I would additionally note that this configuration with the Thousand Oaks area as part of the West San Fernando Valley Congressional District existed from 1992 -2002 and, according to recent news reports , was considered by the Thousand Oaks former Mayor and current Mayor pro tem to have worked well for their community.

I urge your favorable review of our proposal, and the benefits it has in addressing current flaws in the First Draft Congressional District maps.

Thank you for your time.



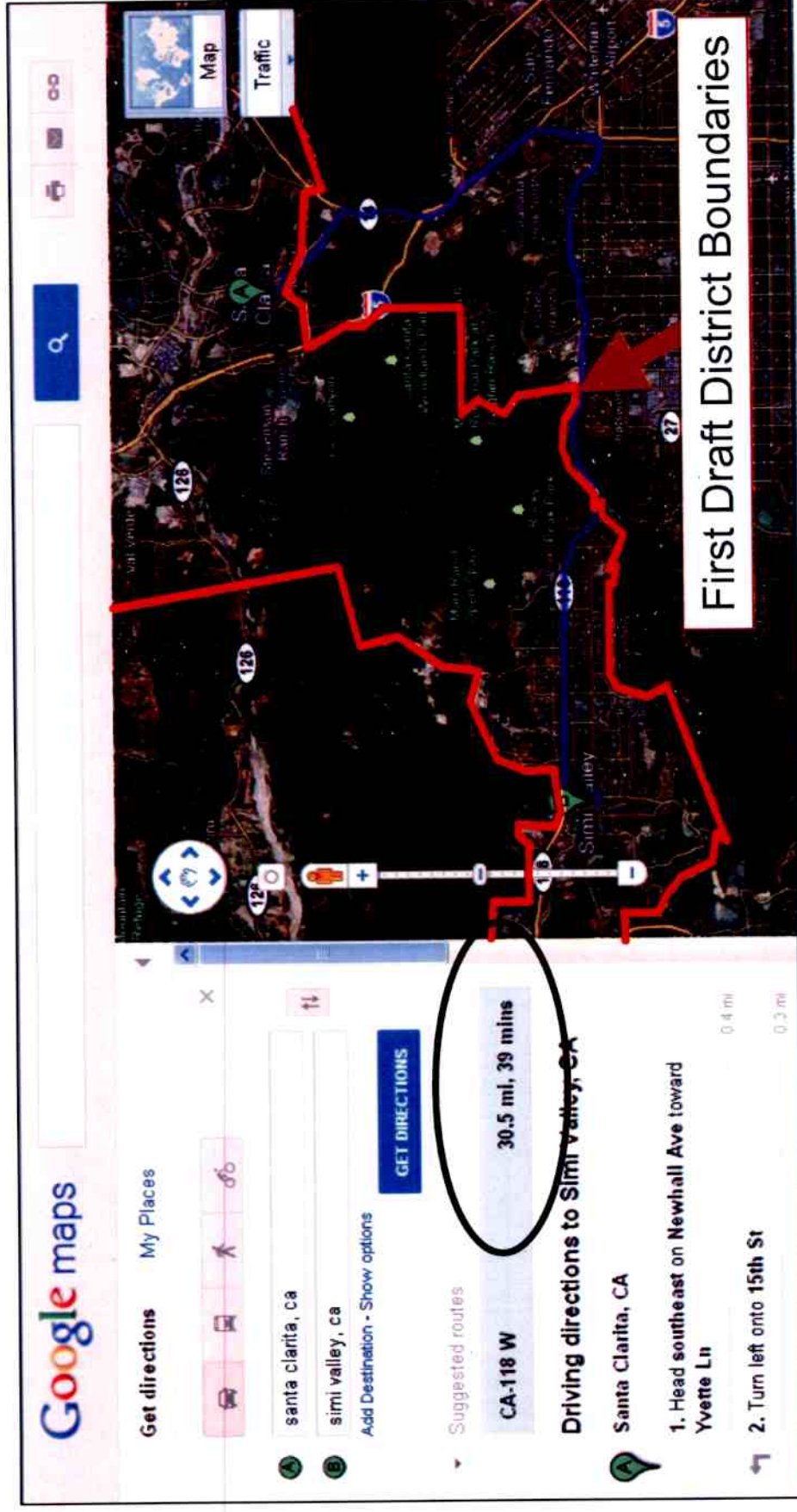
CITY OF SIMI VALLEY

City of Simi Valley Proposal for Congressional District Boundary Maps

Submitted to:

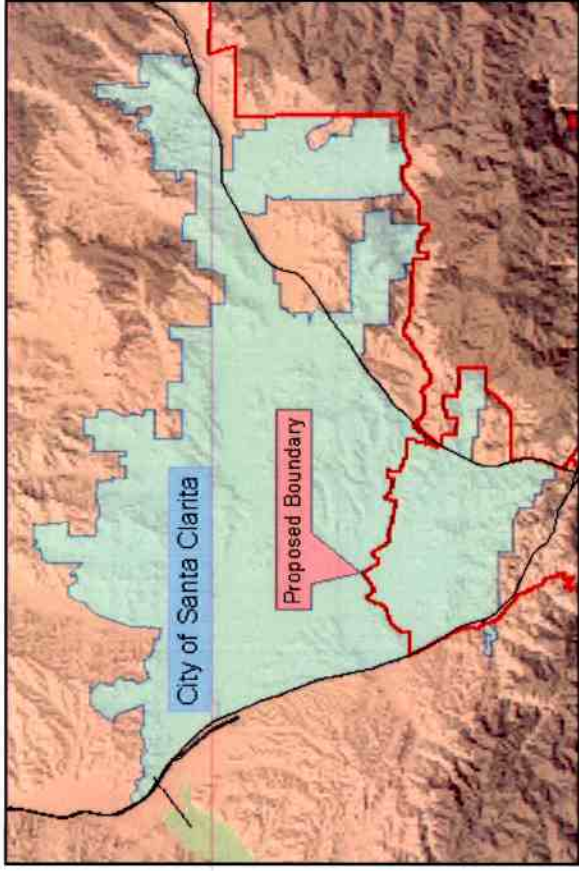
California Citizens Redistricting Commission

July 14, 2011



Issue 1: Simi Valley and Santa Clarita are not closely related.

- Located in different counties, on different freeway corridors, with a mountain between them
- Travel between them is 30.5 miles and 39 minutes of driving



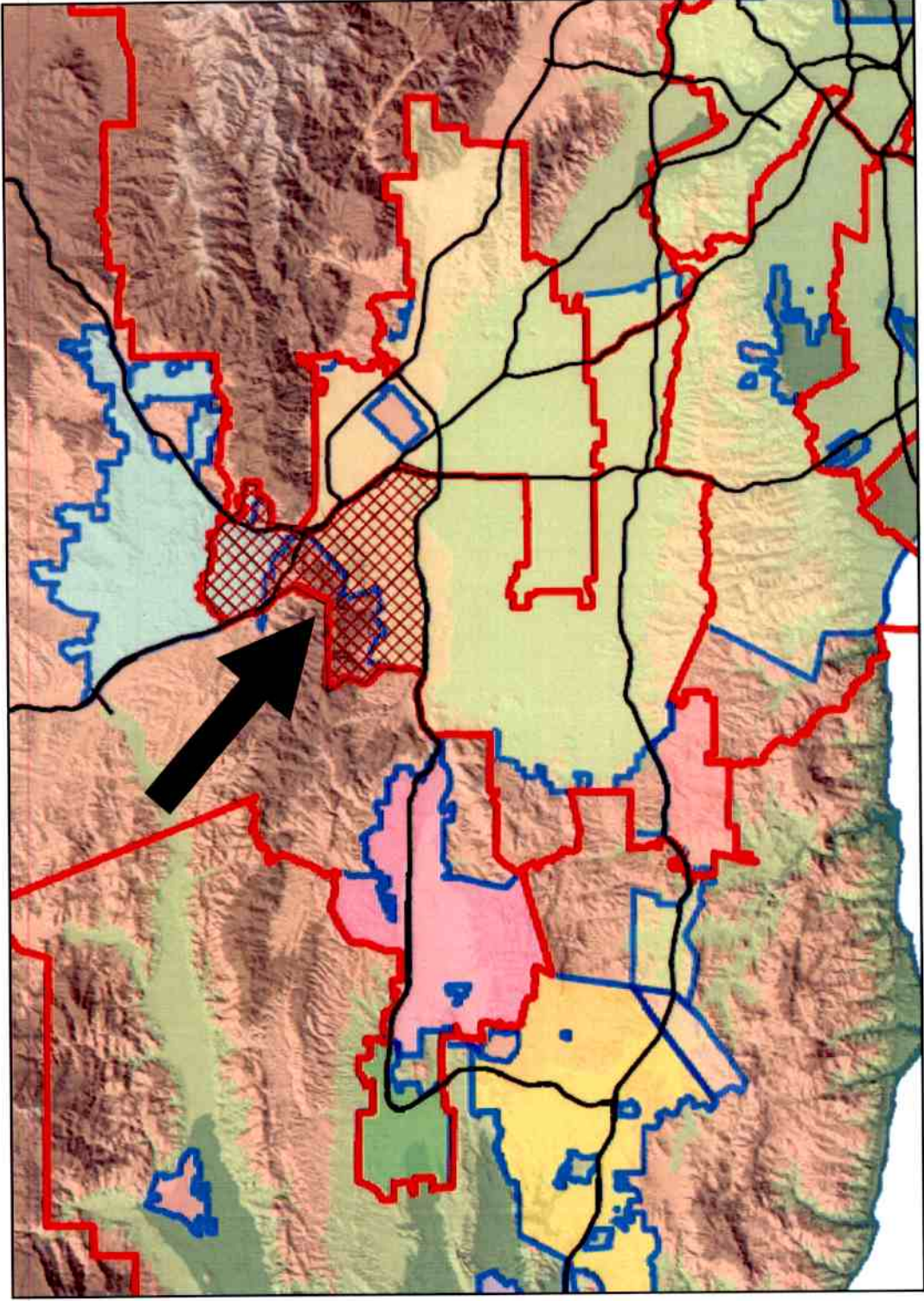
Issue 2:

The City of Santa Clarita is split into two districts.

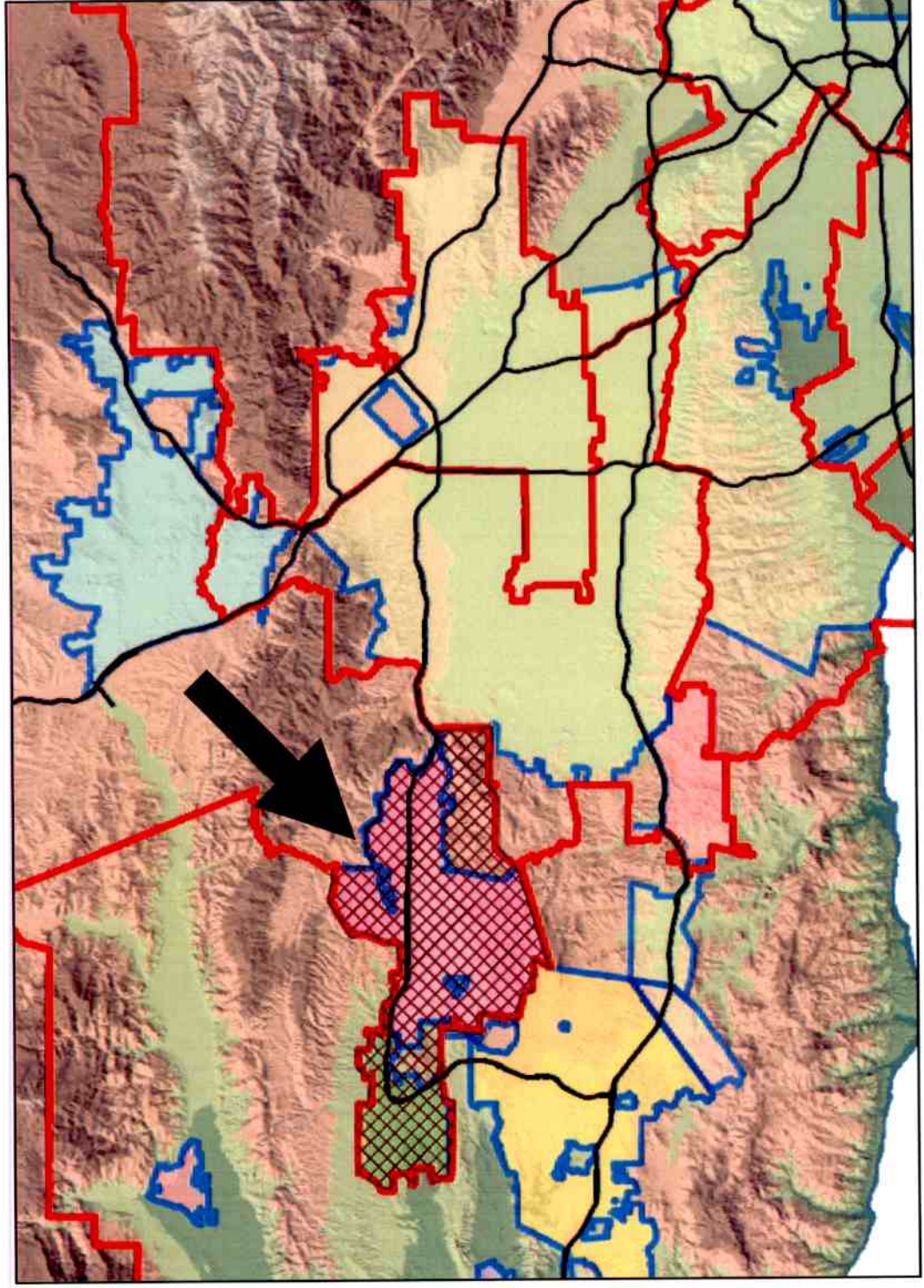
The proposed plan literally splits Main Street from the rest of Santa Clarita.



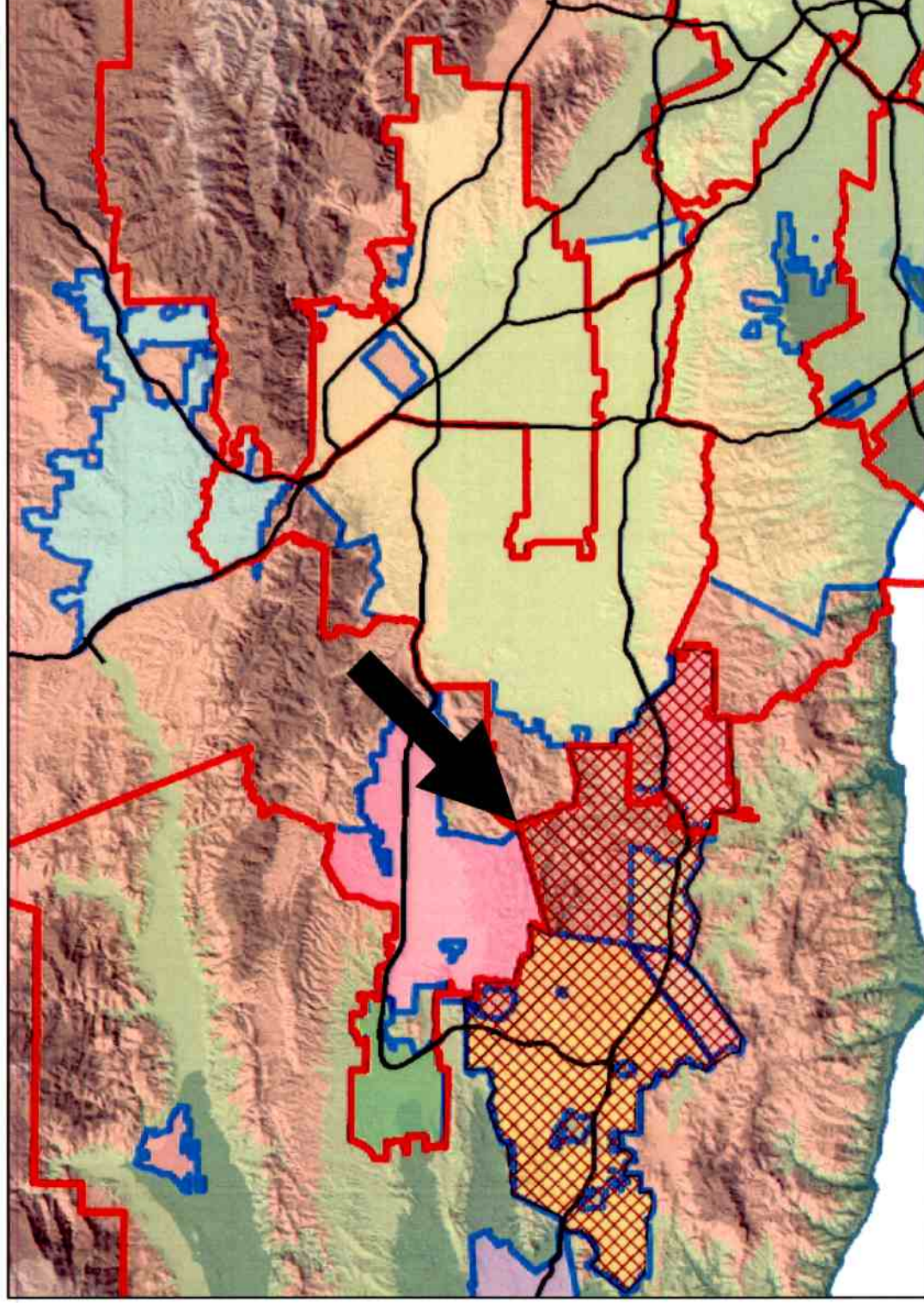
Step 1: Make Santa Clarita whole, and incorporate a portion of Los Angeles into its district.



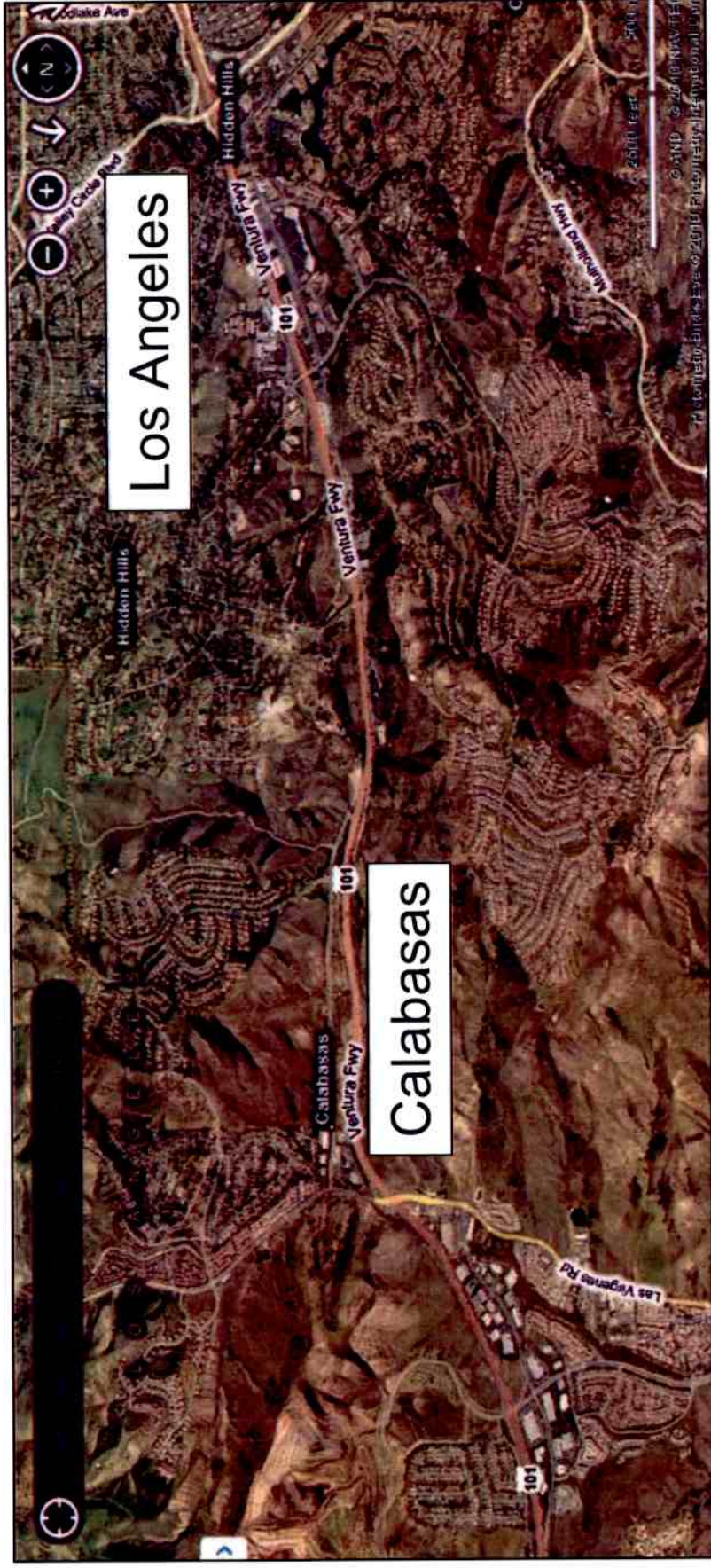
Step 2: Move Simi Valley and Moorpark into the East Ventura County District to balance the Santa Clarita district.



Step 3: Move the 101 Corridor into the San Fernando Valley District to balance each district's population.



The 101 Freeway Corridor is a contiguous urban area consisting of Thousand Oaks, Westlake Village, Agoura Hills, and Calabasas.



Contiguous urban development through Calabasas
(Los Angeles County)

The 101 Freeway Corridor is a contiguous urban area consisting of Thousand Oaks, Westlake Village, Agoura Hills, and Calabasas.



Contiguous urban development through Agoura Hills
(Los Angeles County)

The 101 Freeway Corridor is a contiguous urban area consisting of Thousand Oaks, Westlake Village, Agoura Hills, and Calabasas.



Contiguous urban development through Westlake Village
(Los Angeles County)



CITY OF SIMI VALLEY

Home of The Ronald Reagan Presidential Library

July 22, 2011

California Citizens Redistricting Commission
901 P Street, Suite 154-A
Sacramento, CA 95814

RE: Line Drawing Instructions – July 16, 2011

Dear Honorable Members of the Commission:

On Thursday, July 14, 2011 I provided testimony before your Commission opposing the proposal to include Simi Valley in the Antelope Valley-Santa Clarita Congressional District. I provided an oral statement and distributed a packet of maps and a comprehensive proposal to the Commissioners that would place *Simi Valley in the East Ventura Congressional District*. The proposal outlined the three steps that the Commission could implement to place Simi Valley back in the East Ventura Congressional District, make Santa Clarita whole, and rebalance the populations of the three districts affected by this change.

In preparation for my testimony, Commission staff was contacted to verify the amount of time I would be allotted to make my statements. We were advised that Public Comment is limited to two minutes per speaker; therefore my testimony was prepared to maximize the two-minute time frame. Upon arriving at the meeting, I was informed that a one and a half minute time limit would be imposed on my comments. As a result, I was unable to present my statement in its entirety, and although it was provided to the Commission in writing, along with our comprehensive proposal for *placing Simi Valley in the East Ventura Congressional District*, actions taken subsequent to my interrupted testimony indicate the City's proposal was not fully reviewed.

The July 16, 2011 Line Drawing Instructions posted on the Commission's website contain a note related to my submission stating that "Simi Valley sent a handout drawing attention to a possible split in Santa Clarita." The final direction states "Make sure Santa Clarita is whole." Based on the notes made and published, it appears the Commission has misinterpreted the City's position to *respect Simi Valley's community of interest with Ventura County*, instead selectively choosing pieces of information from our proposal.

The City of Simi Valley's primary area of concern *was not and is not the split of Santa Clarita*. I urge the Commission to review the City's comprehensive proposal again in its entirety and full context. The proposal's focus was on placing Simi Valley back into the East Ventura Congressional District and it provided the steps the Commission could take to implement the proposal. Included in those steps, was a graphic illustration of the linkages that the City of Thousand Oaks has along the 101 Corridor with Los Angeles County cities, the opportunity to make Santa Clarita whole, and the methods the Commission could use to balance the populations in the three districts that would be affected by placing Simi Valley in the East Ventura Congressional District. Each of these components was based on thoughtful consideration of geography, community associations, and a rational alignment of communities of interest.

The Commission appears to be providing more weight to the testimony provided for some communities than for others. For example, the City of Simi Valley and the Simi Valley Chamber of Commerce have both provided testimony to the Commission regarding the City's community of interest with Ventura County. Both the City and Chamber collaborate with other Ventura County agencies on transportation, schools, judicial issues, social services and economic development. Conversely, the City of Thousand Oaks is a member of the Greater Conejo Valley Chamber of Commerce, which represents the cities of Thousand Oaks, Westlake Village and Agoura Hills, and promotes social and economic interest among those communities. Westlake Village and Agoura Hills are both located in the County of Los Angeles, *demonstrating the interconnectivity and common interests those communities share across the County line*. This affiliation demonstrates that Thousand Oaks itself has recognized there is a community of interest with cities in Los Angeles County.

From 1992 to 2002, Thousand Oaks was part of the West San Fernando Valley Congressional District, to no detriment of their representation. In fact, a *Ventura County Star* article dated July 8, 2011 quoted Thousand Oaks Mayor Pro Tem Jacqui Irwin as stating City residents should not be overly concerned if Thousand Oaks were not in a district with the rest of Ventura County. Nevertheless, the Commission has repeatedly made accommodations to include the whole of Thousand Oaks with the rest of Ventura County in the line drawing. *Simi Valley has repeatedly communicated and demonstrated a much stronger community of interest with Ventura County, yet the Commission continually places us with districts in Los Angeles County*.

The City of Simi Valley has now appealed to the Commission on five separate occasions through letters, public testimony and a Resolution stating the City's primary priority that the integrity of Simi Valley's borders be maintained and that the communities of Ventura County be kept together to the maximum extent possible. The statement reflected in the Line Drawing Instructions from July 16, 2011 is inconsistent with the testimony provided by our City to the Commission on July 14, 2011 and the testimony we have repeatedly made to the Commission.

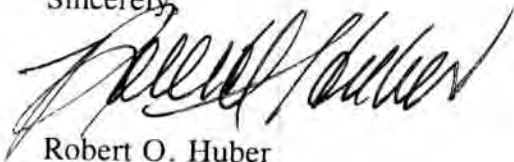
July 22, 2011

Page 3

As the date for the submission of the final maps approaches, we respectfully request that the Commission review all of the testimony provided by the City of Simi Valley and reconsider the statements made in the Line Drawing Instructions to recognize their misinterpretation of the data provided by the City of Simi Valley. To assist you in that regard, I am again submitting my testimony and materials provided to the Commission on July 14, 2011.

Should your staff require further details on our proposal, they may contact Assistant City Manager Laura Behjan at [REDACTED]

Sincerely,

A handwritten signature in black ink, appearing to read "Robert O. Huber", written in a cursive style.

Robert O. Huber
Mayor

Enc.

cc: City Council
City Manager
City Attorney
Assistant City Manager, Government Affairs