

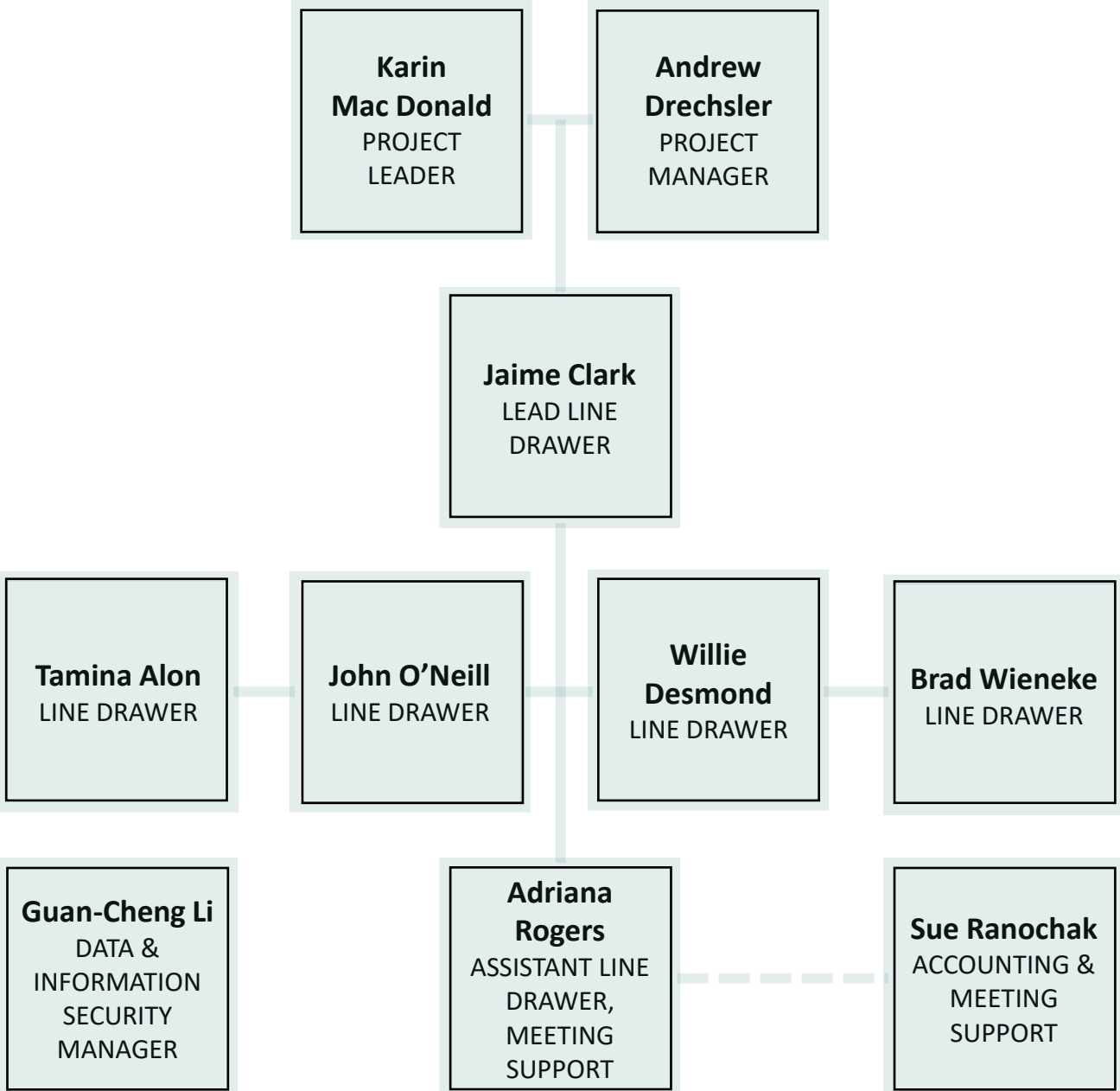
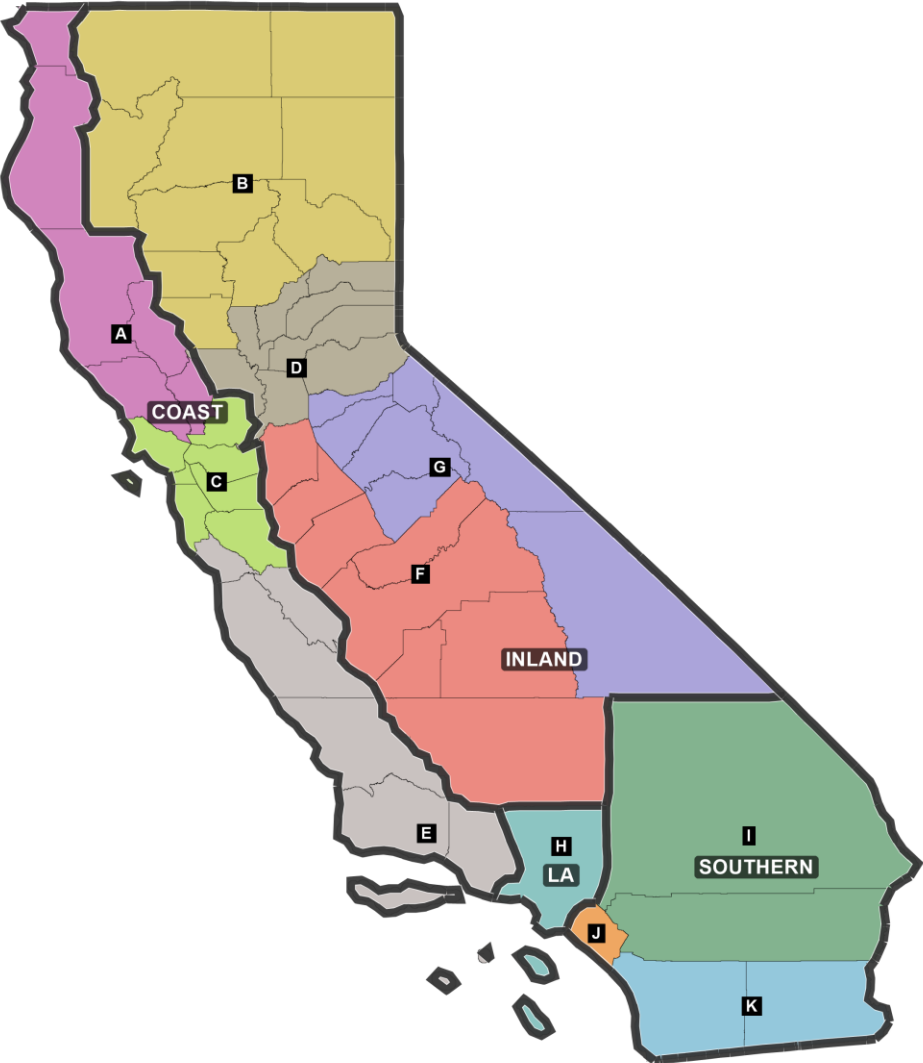
Line Drawer Introduction

*Presentation to the California Citizens
Redistricting Commission*

Andrew Drechsler & Karin Mac Donald

April 1, 2021

INTRODUCING YOUR TEAM



Potential Future Topics for Discussion

- Public Input Meetings
- Data Management
- Extended Calendar and Scheduling
- Legal Compliance
- Drawing the Lines
- What's Missing?

Planning was Not an Option Ten Years Ago

- Selected: *March 19*
- First Input Hearing: *April 9 (Redding)*

How can we help?

Decision Points may include:

- Scheduling
- Location
- Format (virtual/in-person/hybrid)
- Line Drawer role
- Mitigating digital and language access issues
- Efficiency Options (Appointment system; Geography Identification)

- Plan a Dry-Run
- Collaborate with videographer (what will be on the screen?)

Data Management is a Central Component

- Will involve Data Managers, Line Drawers, CRC Staff and others
- Efficiencies in Public Input Hearings requires seamless availability of data
- How, Where and When will the Commission need access to data?
- Which data need to be analyzed or processed?
- How should public input (anticipated ~40,000 submissions) be made available for the public and the commission?
- How will public input be coded? (Develop coding scheme early)
- More access to mapping software means more maps will be submitted -
How should maps be processed, coded, indexed and made available?
- Streamline data access

From a Line Drawer Perspective, the Last Process was Rushed

- Census data were released before line drawers were selected
- Three weeks between consultant selection and the first input hearing
- Redistricting database was released same week input hearings began
- Two months from last input hearings to publishing final maps

There is more time in this calendar – How will that time be used?

Before Database

- Education/Outreach: *New*
- Public Input: *Ongoing*
- Preliminary Direction: *Identifying preliminary key COI*
- Conduct RPV analysis
- Visualizations: *Using unadjusted 'legacy' data?*

After Database

- Public Input: What is the timeline to submit full or partial map proposals?
- Draft Maps: How early? How many?
- Holidays: Create schedules early?

What Can Be Done Early

- Implementing Criteria: e.g. Acceptable Population Deviations.
- VRA Compliance (once VRA counsel has been hired): Potential majority-minority districts. Role of coalition districts. Former Section V jurisdictions. Use of electoral data.

How to Work During VRA Assessment Process

- What can be kept public in spirit of transparency
- What must be confidential to protect against litigation
- How to ensure Commissioners stay in charge

Where to Start: Prioritize based on legal flexibility

Regional Line Drawer Approach: Our approach to manage the project

Training: To ensure that You Direct - We implement - CRC decides

Developing Maps: How much live? How much in person?

The full Commission only meets so many days. What subcommittees will be assigned to take the lead on some key issues?

- Identifying future training needs
- Deliverables for public input hearings
- Interaction with data management team
- Coordination with counsel
- Integrating recommendations into CRC calendar
- Technical aspects of actual line drawing
- Clarifying commission direction between meetings for each region
- Contract management issues

Thank you for your time!

We look forward to working with you!
