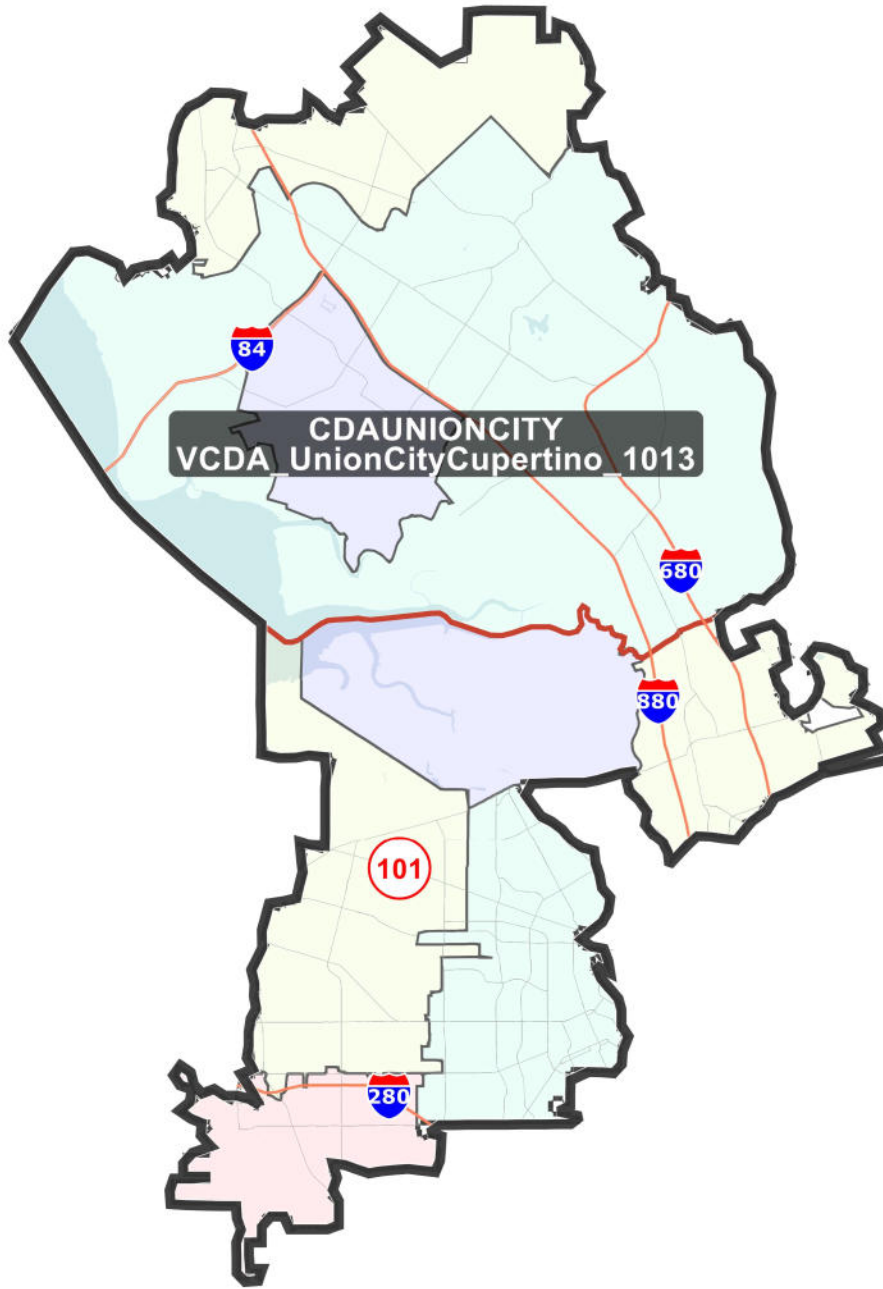
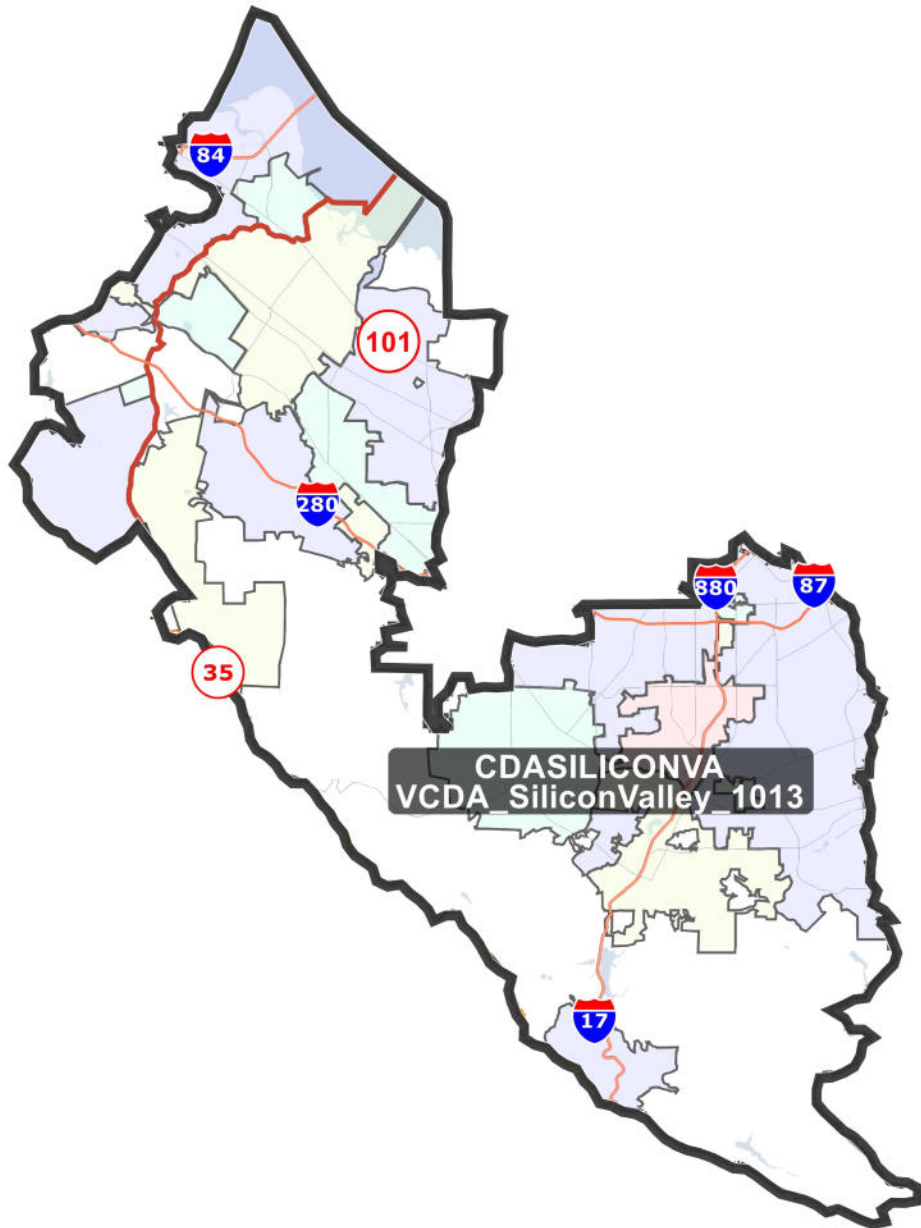


District: CDAUNIONCITY



Field	Value
Name	CityCupertino_1013
% Deviation	1.96%
Total Population:1	775236
%LatinoCVAP	15.31%
%BlackCVAP	3.81%
%AsianCVAP	46.83%
%IndigenousCVAP	0.45%
%WhiteCVAP	31.98%

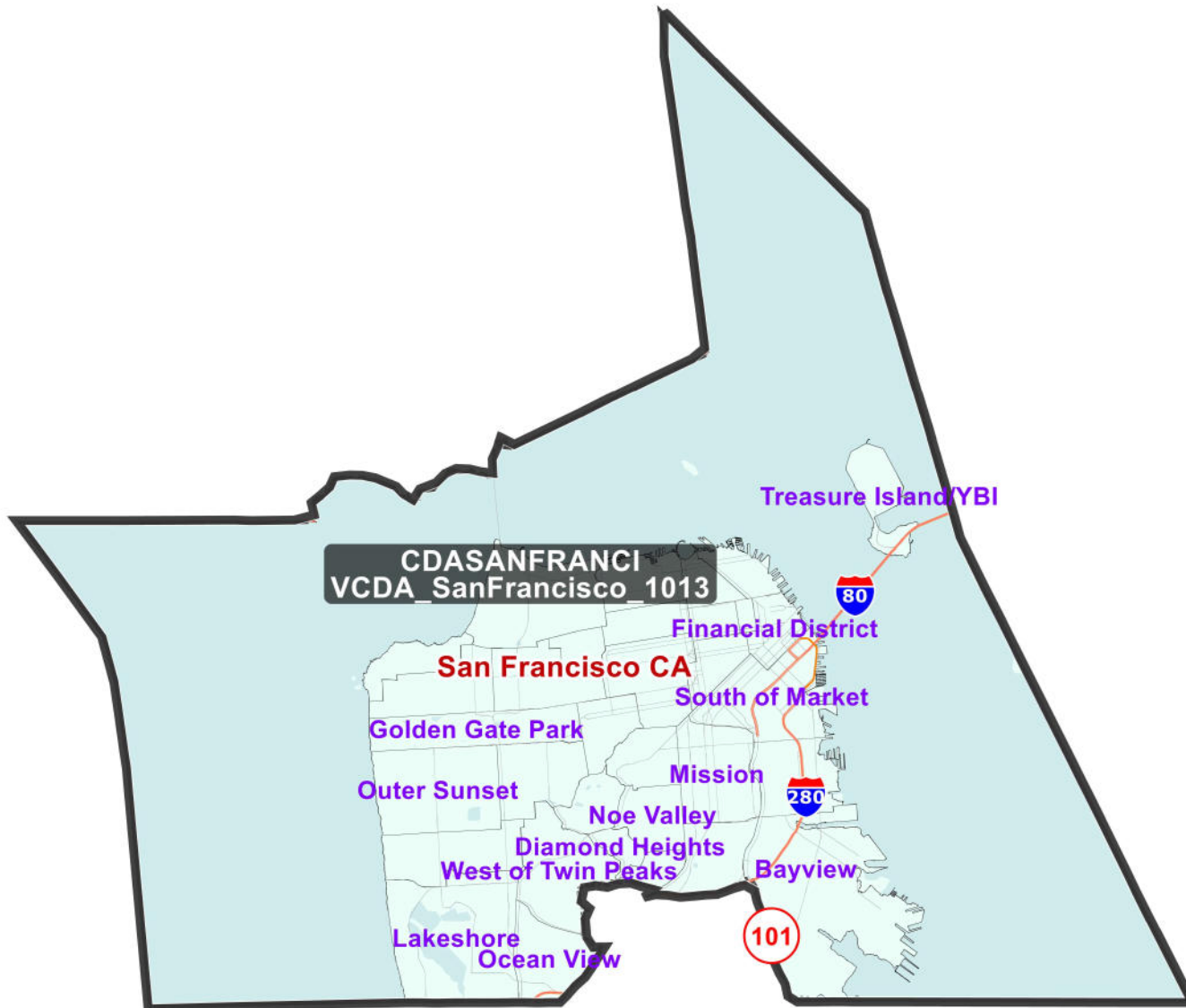
District: CDASILICONVA



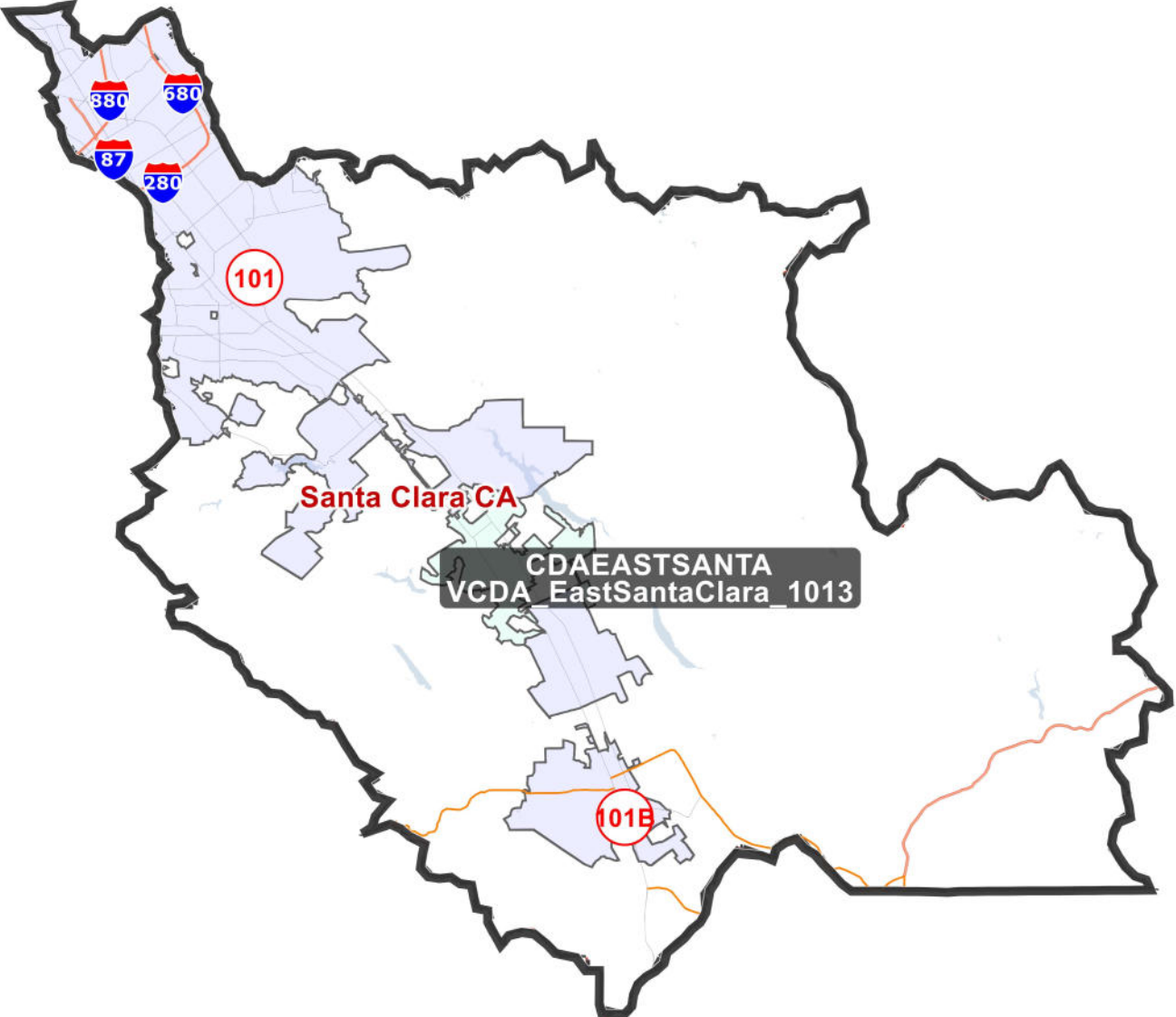
Field	Value
Name_SiliconValley_1013	
% Deviation	-2.02%
Total Population:1	744976
%LatinoCVAP	13.92%
%BlackCVAP	3.63%
%AsianCVAP	23.07%
%IndigenousCVAP	0.45%
%WhiteCVAP	57.67%

District: CDASANFRANCI

Field	Value
Name_SanFrancisco_1013	
% Deviation	1.72%
Total Population:1	773445
%LatinoCVAP	10.77%
%BlackCVAP	6.14%
%AsianCVAP	32.37%
%IndigenousCVAP	0.51%
%WhiteCVAP	49.09%



District: CDAEASTSANTA



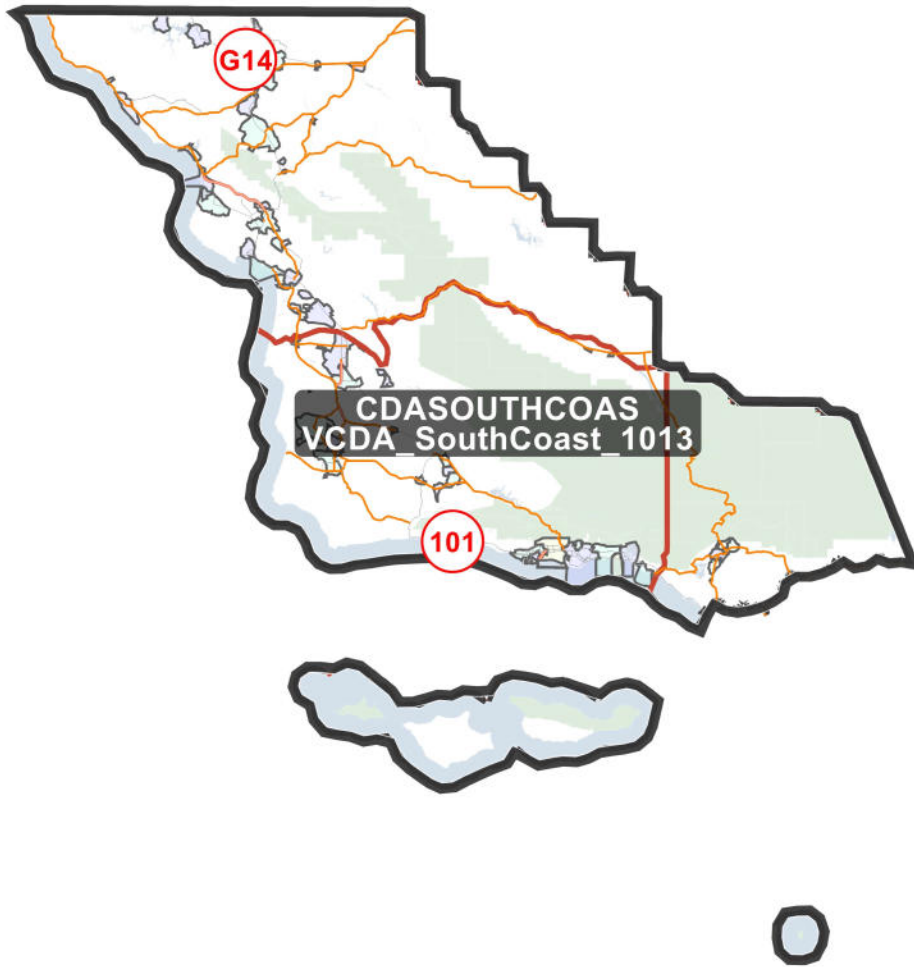
Field	Value
Name:astSantaClara_1013	
% Deviation	0.05%
Total Population:1	760753
%LatinoCVAP	28.62%
%BlackCVAP	3.38%
%AsianCVAP	36.92%
%IndigenousCVAP	0.58%
%WhiteCVAP	29.24%

District: CDAMIDCOAST



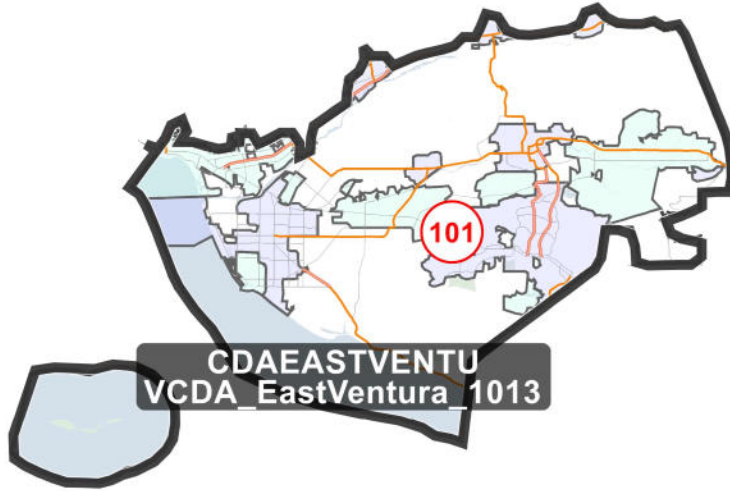
Field	Value
Name	CDA_MidCoast_1013
% Deviation	1.32%
Total Population:1	770350
%LatinoCVAP	32.55%
%BlackCVAP	2.36%
%AsianCVAP	6.54%
%IndigenousCVAP	0.99%
%WhiteCVAP	56.27%

District: CDASOUTHCOAS

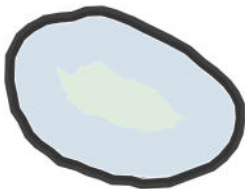


Field	Value
Name A_SouthCoast_1013	
% Deviation	0.34%
Total Population:1	762919
%LatinoCVAP	23.96%
%BlackCVAP	2.05%
%AsianCVAP	5.20%
%IndigenousCVAP	1.08%
%WhiteCVAP	67.07%

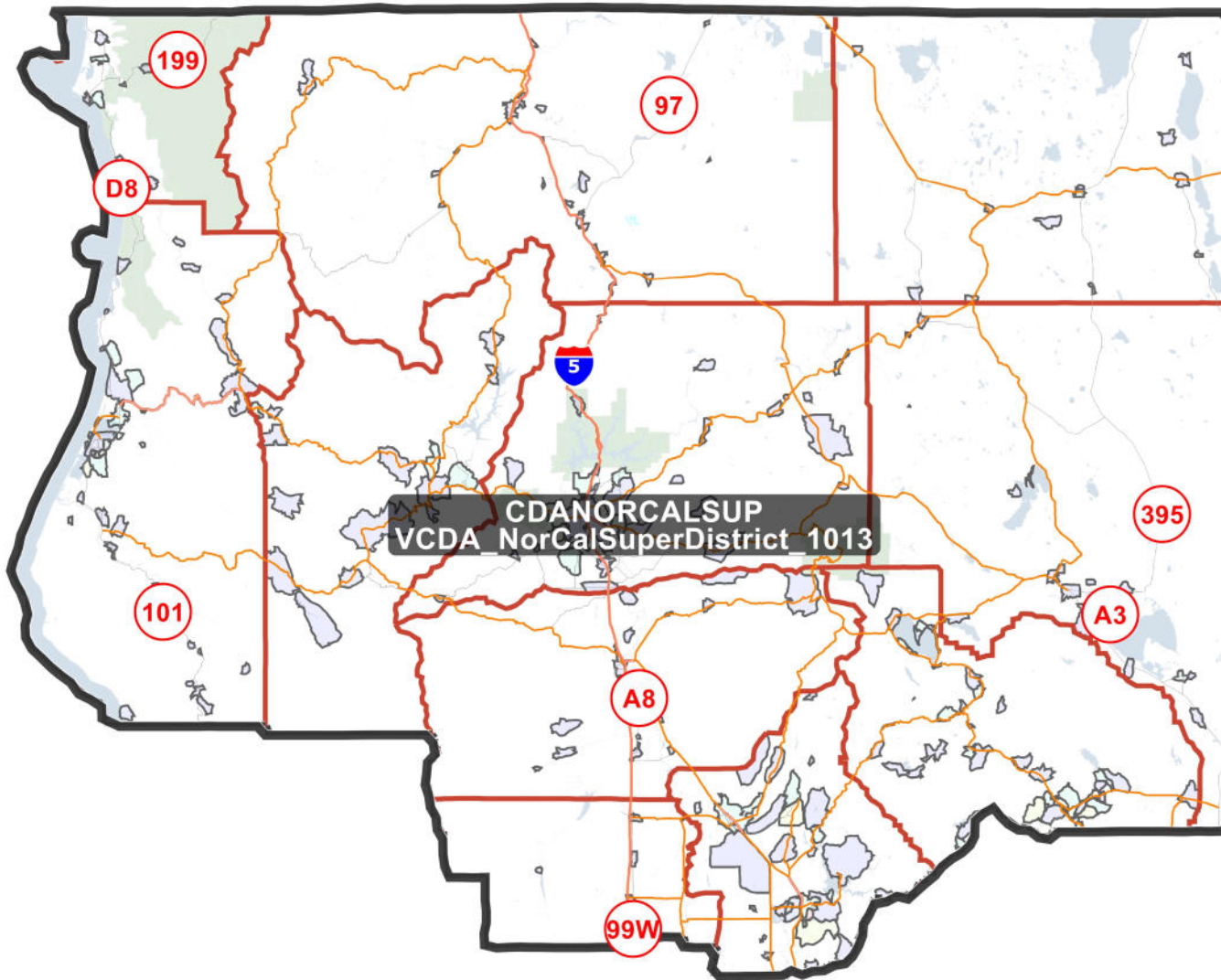
District: CDAEASTVENTU



Field	Value
Name\ EastVentura_1013	
% Deviation	4.23%
Total Population:1	792531
%LatinoCVAP	33.21%
%BlackCVAP	2.39%
%AsianCVAP	7.98%
%IndigenousCVAP	0.78%
%WhiteCVAP	54.94%



District: CDANORCALSUP



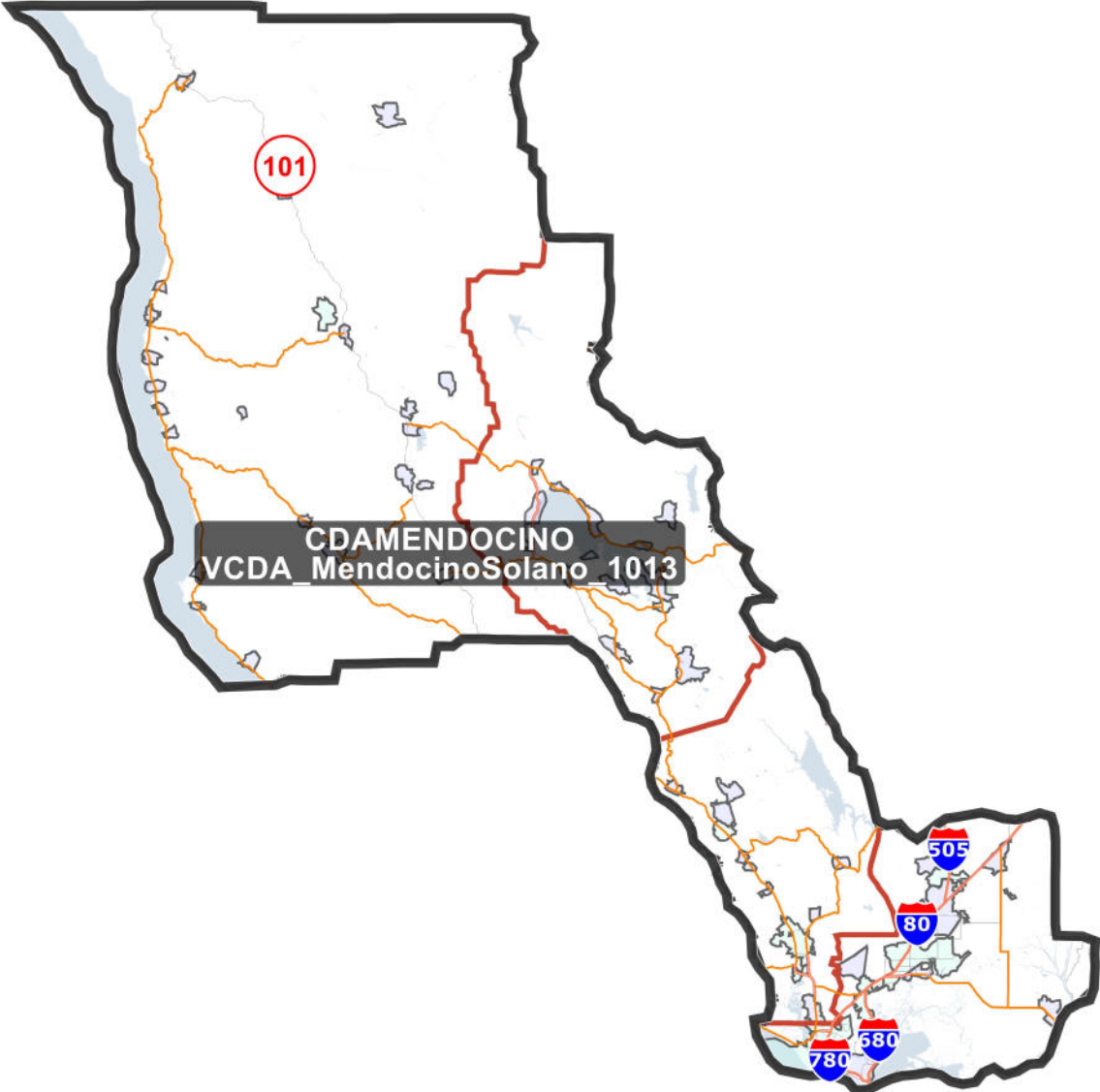
Field	Value
Name	SuperDistrict_1013
% Deviation	0.83%
Total Population:	766693
%LatinoCVAP	10.50%
%BlackCVAP	1.58%
%AsianCVAP	2.92%
%IndigenousCVAP	4.28%
%WhiteCVAP	79.87%

District: CDASONOMAMAR



Field	Value
Name_SonomaMarin_1013	
% Deviation	-1.59%
Total Population:1	748268
%LatinoCVAP	13.53%
%BlackCVAP	2.01%
%AsianCVAP	5.25%
%IndigenousCVAP	1.19%
%WhiteCVAP	77.18%

District: CDAMENDOCINO



Field	Value
Name	ndocinoSolano_1013
% Deviation	-1.86%
Total Population:1	746180
%LatinoCVAP	18.23%
%BlackCVAP	10.19%
%AsianCVAP	11.71%
%IndigenousCVAP	1.78%
%WhiteCVAP	56.27%