



CA Redistricting 101

Wedrawthelines.ca.gov

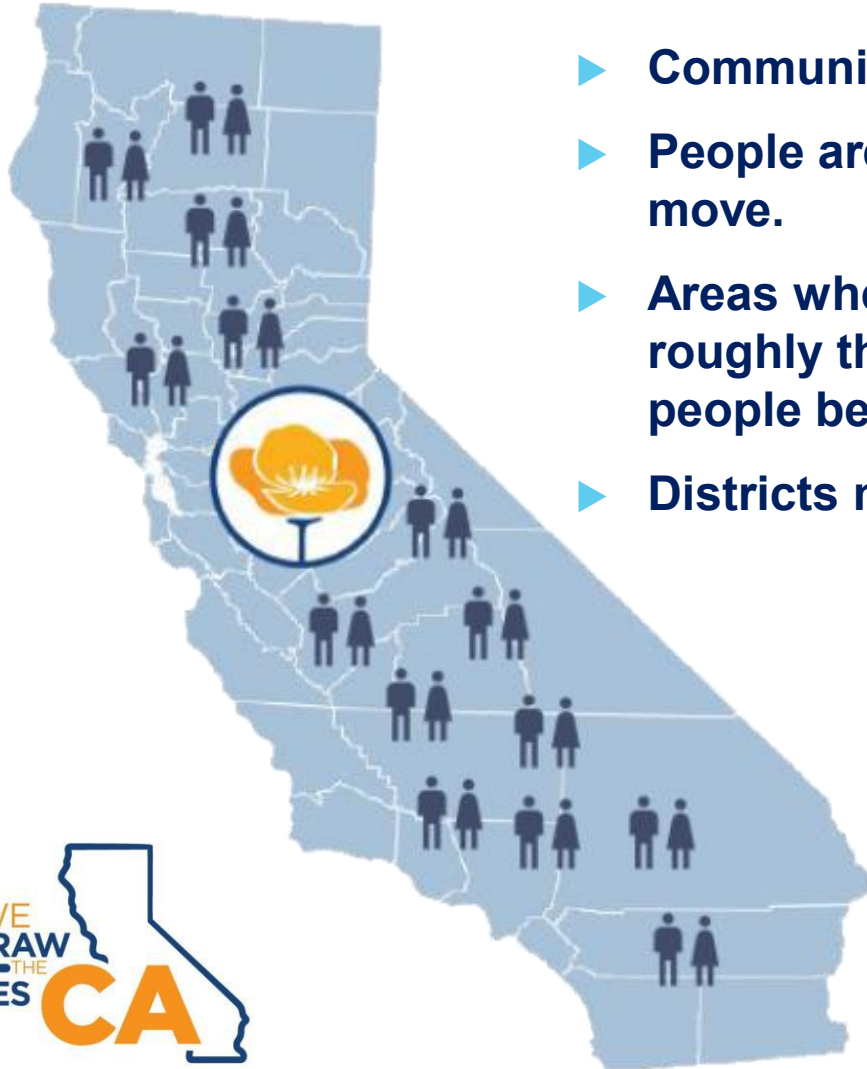


What is Redistricting

**Drawing (and re drawing)
the lines that determine
which voters are
represented by each
legislative seat.**



Why We Redraw District Lines



- ▶ **Communities grow and shrink.**
- ▶ **People are born, and die, and move.**
- ▶ **Areas where there were once roughly the same number of people become lopsided.**
- ▶ **Districts need to be redrawn.**

Why Redistricting

- ▶ **Census**—Redistricting is based on the idea that each of our voices should be represented fairly by creating districts that have the same number of people. Census data that is collected every ten years is used to draw new maps to account for the ways that populations have changed and moved across the states and districts.
- ▶ **Reapportionment** –The reallocation of House seats among the states, done after each national census to ensure that seats are held by the states in proportion to the size of their population.
- ▶ **Fair Representation**—Historically, legislators have drawn maps that allowed them to choose their voters rather than enabling voters to choose their representatives. This former system undermined the concept of fair representation.



History

- ▶ **Prior to 2010**—Legislators Drew Lines
- ▶ **Proposition 11**—the Voters FIRST Act/We Draw the Lines
- ▶ **Proposition 20**—Congressional Districts
- ▶ **From Census to Redistricting**
- ▶ **2010 Redistricting Commission**
- ▶ **2020 Redistricting Commission**
- ▶ **Other States Following Suit**—Arizona, Colorado, Idaho, Michigan, Montana and Washington use independent commissions to draw the lines.



Who we are

► 2020 Commissioners: 14 Members



•**Isra Ahmad**, San Jose, No Party Preference

•**Sara Sadhwani**, La Cañada Flintridge, Democrat



•**Linda Akutagawa**, Huntington Beach, No Party Preference

•**Patricia Sinay**, Encinitas, Democrat

•**Jane Andersen**, Berkeley, Republican

•**Derric Taylor**, Los Angeles, Republican

•**Alicia Fernández**, Clarksburg, Republican

•**Pedro Toledo**, Petaluma, No Party Preference

•**Neal Fornaciari**, Tracy, Republican

•**Trena Turner**, Stockton, Democrat

•**J. Ray Kennedy**, Morongo Valley, Democrat

•**Angela Vázquez**, Los Angeles, Democrat

•**Antonio Le Mons**, Studio City, No Party Preference

•**Russell Yee**, Oakland, Republican

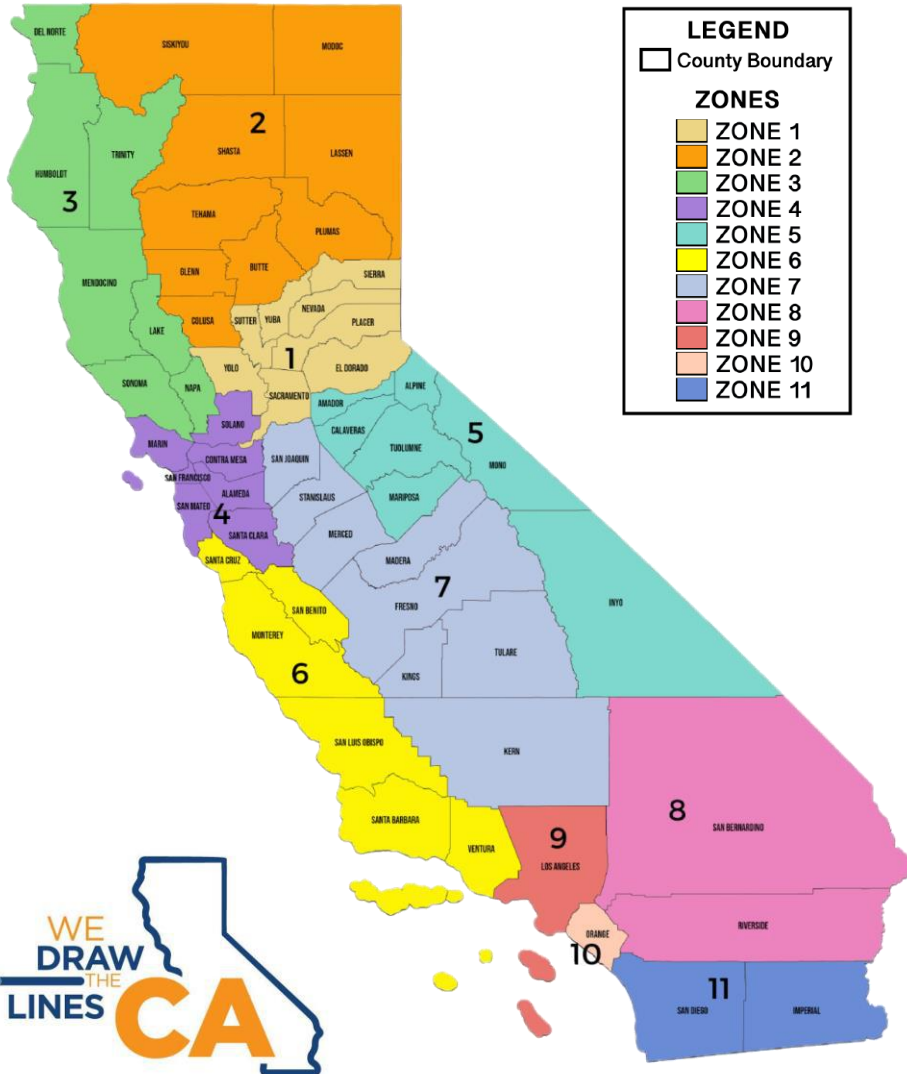


Commissioner Selection/ Duties

- ▶ **Commissioner Applications (20,000 applicants)**
- ▶ **Interview/Screening Process (120 applicants)**
- ▶ **Legislative Strikes (12 strikes each party)**
- ▶ **Lottery System: First 8**
- ▶ **Final 6 Selection**
- ▶ **Community Outreach/Input**
- ▶ **Drawing the Maps**



Outreach Zones



ZONE	COUNTIES	COMMISSIONERS
1	El Dorado, Nevada, Placer, Sacramento, Sierra, Sutter, Yolo, Yuba	Commissioner Fernandez Commissioner LeMons
2	Butte, Colusa, Glenn, Lassen, Modoc, Plumas, Shasta, Siskiyou, Tehama	Commissioner Sinay Commissioner Yee
3	Del Norte, Humboldt County, Mendocino, Lake, Napa, Sonoma, Trinity	Commissioner Toledo Commissioner Taylor
4	Alameda, Contra Costa, Marin, San Francisco, San Mateo, Santa Clara, Solano	Commissioner Yee Commissioner Toledo
5	Alpine, Amador, Calaveras, Inyo, Mariposa, Mono, Tuolumne	Commissioner Andersen Commissioner Akutagawa
6	Monterey, San Benito, San Luis, Obispo, Santa Barbara, Santa Cruz, Ventura	Commissioner Fornaciari Commissioner Kennedy
7	Fresno, Kern, Kings, Madera, Merced, San Joaquin, Stanislaus, Tulare	Commissioner Turner Commissioner Vazquez
8	Riverside, San Bernardino	Commissioner Kennedy Commissioner LeMons
9	Los Angeles	Commissioner Taylor Isra.Ahmad@crc.ca.gov
10	Orange	Commissioner Akutagawa Commissioner Sadhwani
11	Imperial, San Diego	Commissioner Sinay Commissioner Ahmad

Line Drawing Criteria

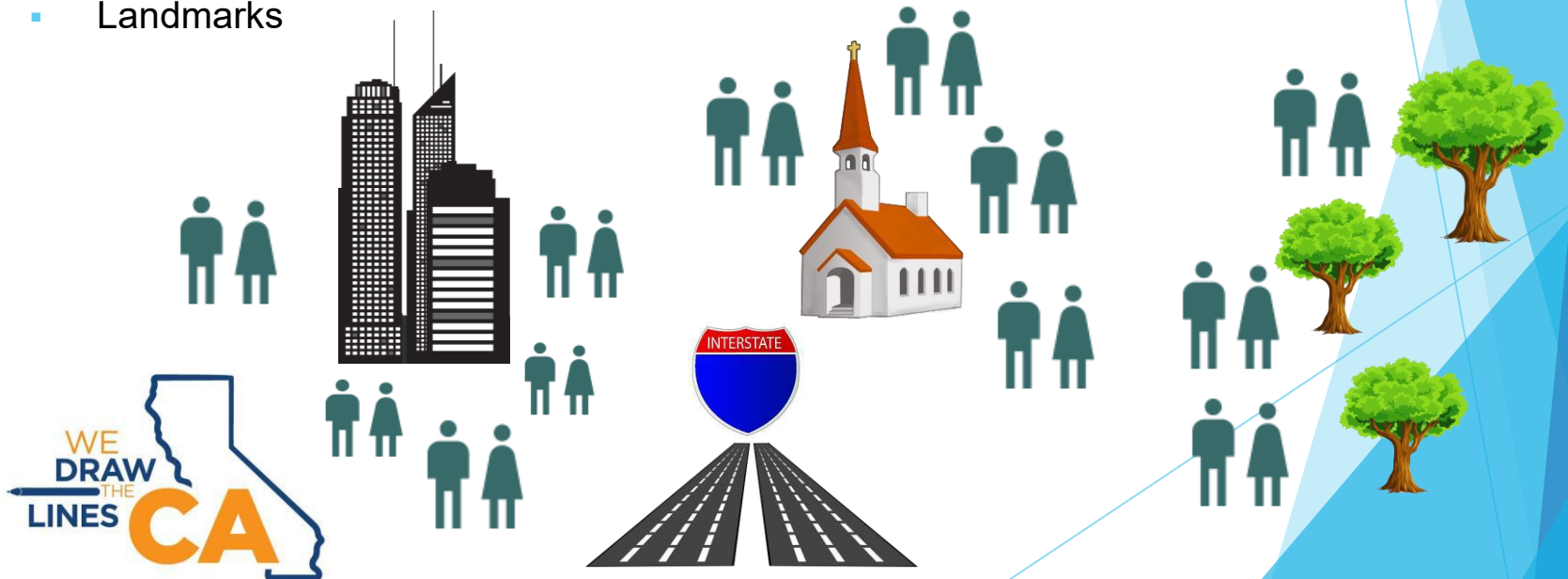
The Commission must follow this criteria when drawing district maps:

- ▶ **Equal population**
- ▶ **Comply with the Voting Rights Act**
- ▶ **Be contiguous**
- ▶ **Respect the boundaries of neighborhoods and communities of interest**
- ▶ **Geographically compact**
- ▶ **Adjacent districts**
- ▶ **Not to favor or discriminate against an incumbent, candidate, or political party**



Communities of Interest (COI)

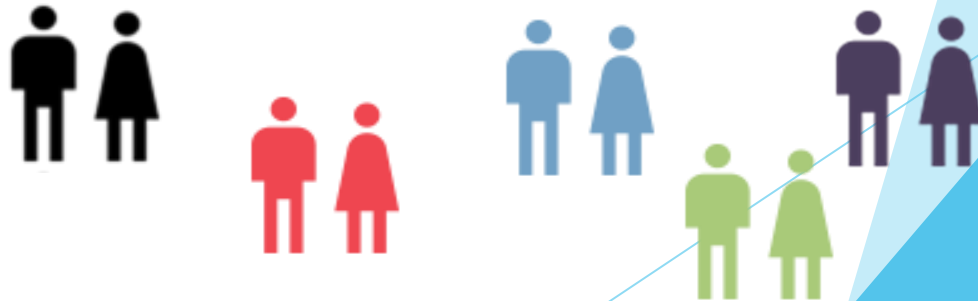
- ▶ **Communities of Interest (COI)**--A community of interest is a contiguous population which shares common social and economic interests that should be included within a single district for purposes of its effective and fair representation. Examples include areas in which the people share similar living standards, use the same transportation facilities, have similar work opportunities, or have access to the same media.
- ▶ **How do you define your community? (30 sec)**
 - Geographic
 - Boundaries
 - Landmarks



Your Voice

- ▶ **Why is it important?**
- ▶ **Why should I be involved?**
- ▶ **Your role in the process**

Redistricting has been used at times to exclude communities from political power. By fully participating in and monitoring the upcoming redistricting process, historically underrepresented communities will have a better opportunity to elect candidates of their choice and voice their needs and interests.





Participating in the Process

- ▶ Familiarize Yourself with Criteria
- ▶ Organize Your Community
- ▶ Clarify Your Goals
- ▶ Testify at Hearings
- ▶ Advocate for Your Community
- ▶ Define Your Community or Someone Else Will!




Draw My Community Tool / COI Tool

- ▶ Public Mapping Tool
- ▶ Submit Your COI Directly to Commission

Draw My CA Community  Languages 

My Community


1. Describe your community 

Give your community a name*
Required

Tell us about your community. What are your shared interests? What brings you together? What is important to your community?*

Required

3. Submit your community



Map tiles by [Stamen Design](#), under [CC BY](#).



Timeline

- ▶ **February-March:** Education Meetings
- ▶ **April-May:** Public Hearings
- ▶ **May-June:** Line Drawing Sessions
- ▶ **June:** Public Hearings Continued
- ▶ **June-July:** Line Drawing Sessions
- ▶ **July:** Draft Maps
- ▶ **July-August:** Line Drawing Sessions
- ▶ **August 15:** Final Maps to Secretary of State*

*May be delayed due to census data delays.



Contact Us

To request an informational session, please contact the CA Citizens Redistricting Commission.

California Citizens Redistricting Commission

721 Capitol Mall, Suite 260

Sacramento, CA 95814

(916)323-0323

Marcy.Kaplan@crc.ca.gov

This presentation is also available at
[**Wedrawthelines.ca.gov**](http://Wedrawthelines.ca.gov)

